



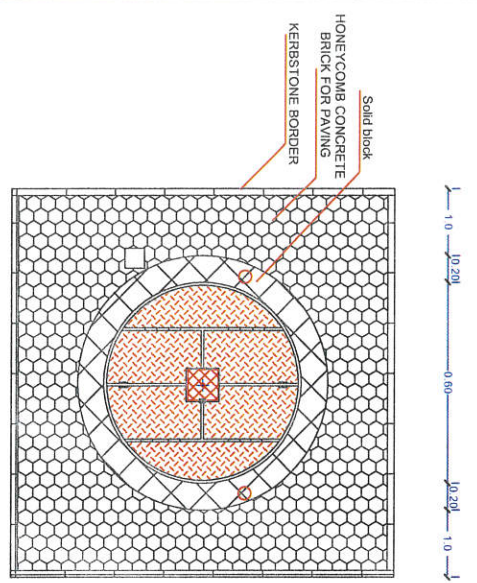
Diagram of New Water Supply Pipeline to Tower Tank

ACTION
HUMANITY

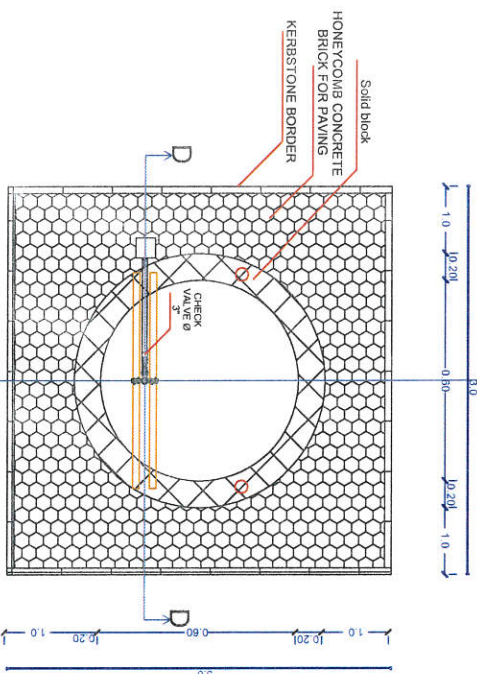
Project Name: Restoring Water Access for Vulnerable families in Lahj

Governorate of Lahj - Bir Omar Village - Tuban District

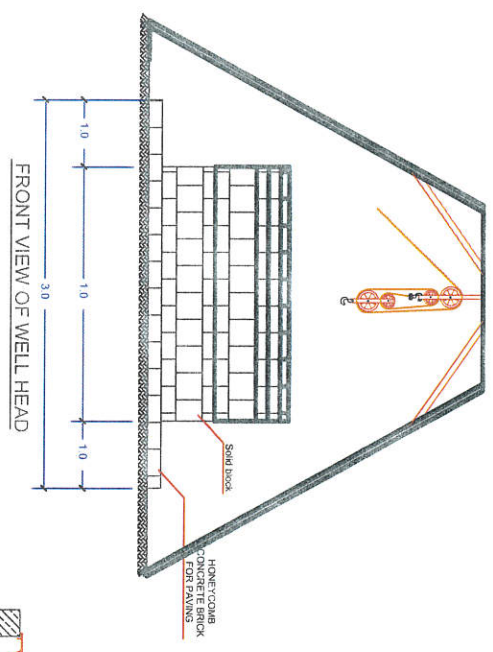
WATER SUPPLY SYSTEM	Project No.:	1754
WATER SUPPLY NETWORK	Dwg. No.:	1754
Diagram of New Water Supply Pipeline to Tower Tank	Design	Eng Mohamed A. Salem
	Checked	Eng Mohamed A. Salem
	Scale:	1:100
	Drawing No.:	1
	Project Coordinator:	Eng Mohamed A. Salem
	Rev.:	01



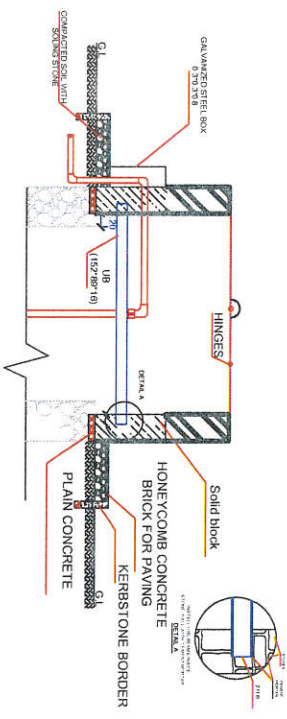
WATER SOURCE (WELL HEAD)



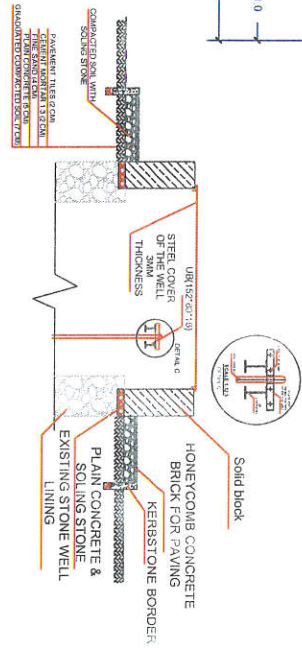
WATER SOURCE (WELL HEAD)



FRONT VIEW OF WELL HEAD



CROSS SECTION D-D OF WELL HEAD



CROSS SECTION E-E OF WELL HEAD



Project Name: Restoring Water Access for Vulnerable families in Lahji Bir Omar Village - Tuban District

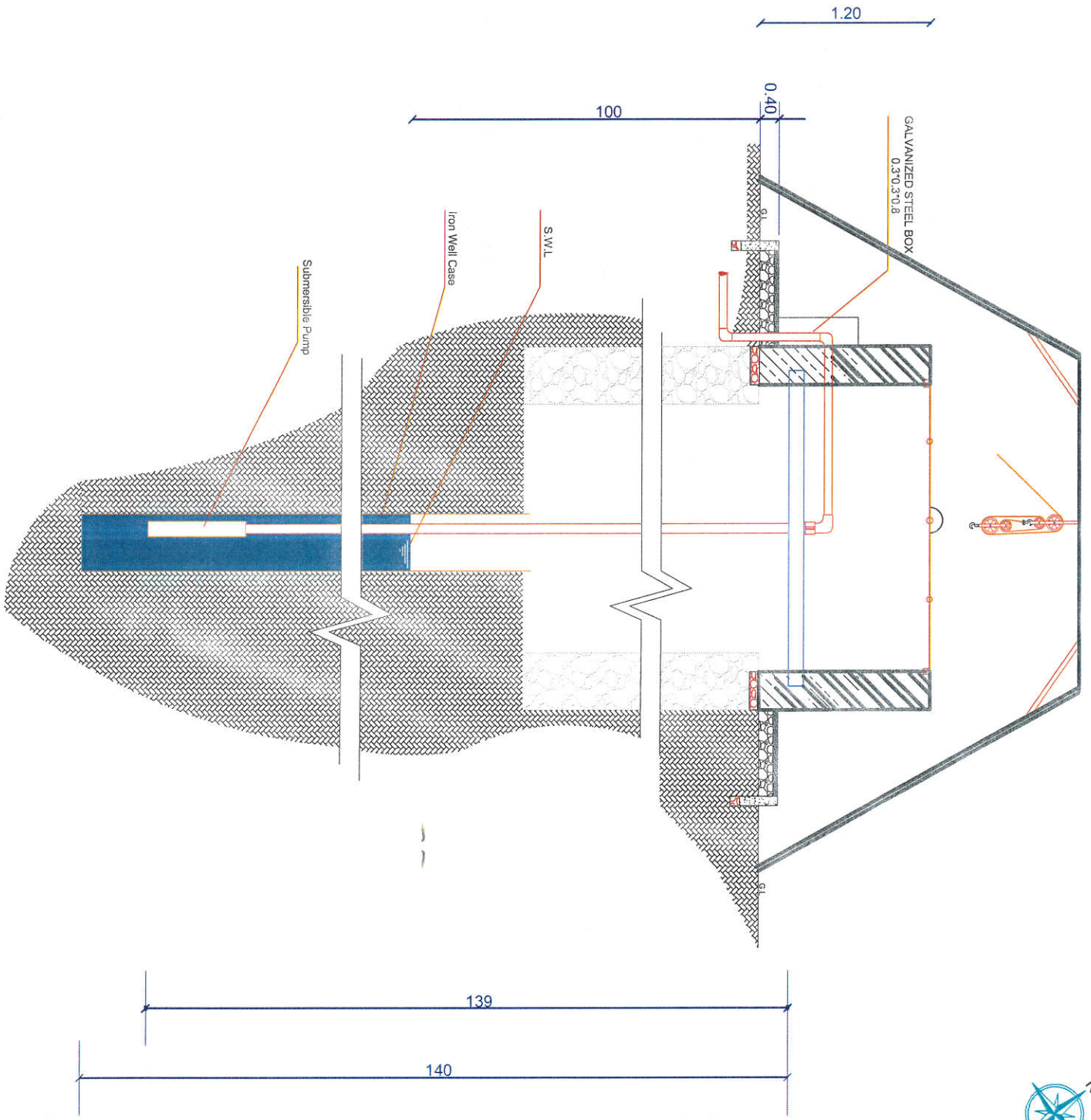
Governorate of Lahji - Bir Omar Village - Tuban District

WATER SUPPLY SYSTEM

WATER SUPPLY NETWORK

Diagram of Wellhead Room

Scale:	Drawing No.:	Project No.:
1:100	2	1754
Date:	Design:	Design:
2025	1:100	1754
2025	1:100	1754



ACTION FOR HUMANITY

Project Name: Restoring Water Access for Vulnerable families in Lahji

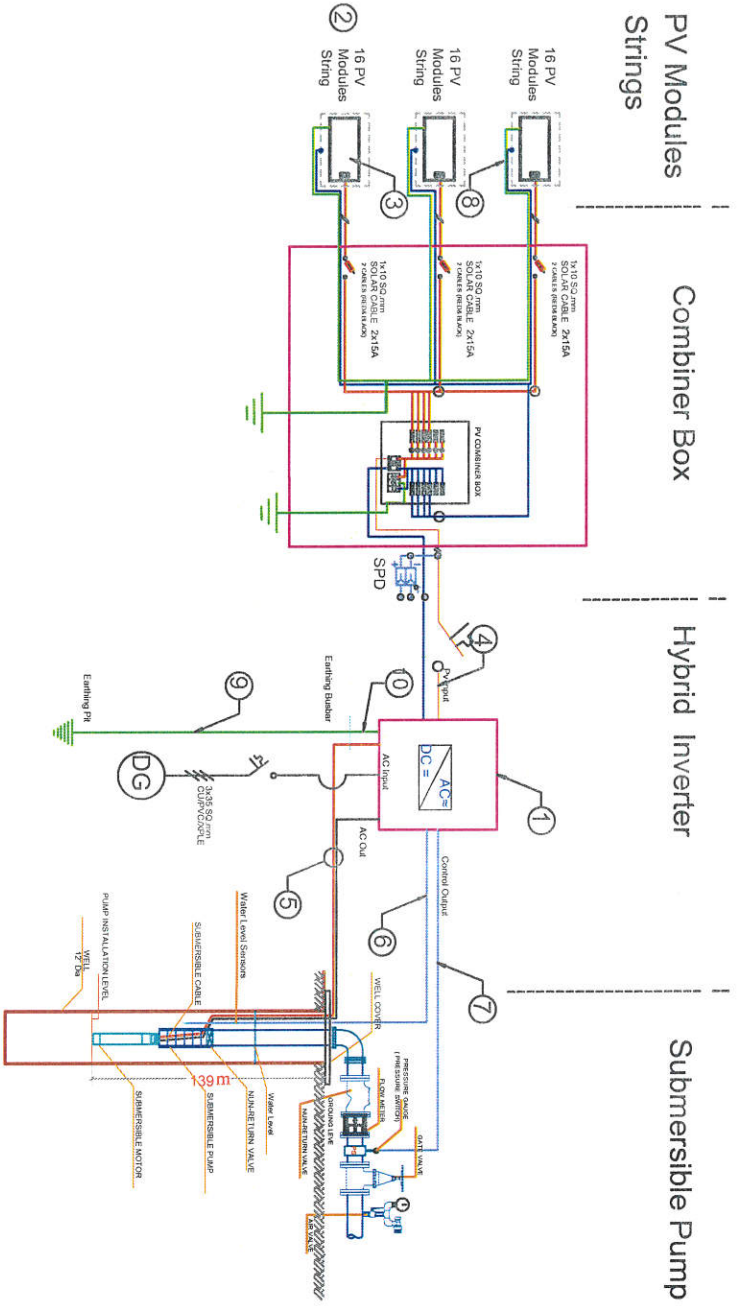
Gavornarate of Lahji - Bir Omar Village - Tuban District

WATER SUPPLY SYSTEM

WATER SUPPLY NETWORK

Diagram of Deep Tube Well

Scale:	1:100	Drawing No.:	3	Project No.:	1784
DATE:	2025	Design:	Eng. Muhammad A. Salam	Checked:	Eng. Muhammad A. Salam
		Checked:	Eng. Muhammad A. Salam		



Well Code	AL_GBANA WELL	
Sn	Item	Size / Capacity
1	Inverter Power, KW	30
2	# of PV Strings	3
3	DC cable Between Arrays, mm ²	2 X 10
4	DC cable between Combiner & inverter, mm ²	2 X 50
5	Pump AC Cable, mm ²	4 X 25
6	Level Sensor Cable, mm ²	2 x 1.5

Sn	Item	Size / Capacity
7	Pressure Switch Cable, mm ²	2 x 1.5
8	Earthing Cable between PV modules , mm ²	1 x 10
9	Earthing Cable from bus bar loearthring pit, mm ²	1 x 35
10	Earthing Cable from Inverter to the Bus bar, mm ²	1 x 35

Drawing Notes:

- 1- Entrance portion of cable from outside to the inverter room shall be protected by GI pipes .
- 2- Routing cables on the ground of the room shall be protected by either GI pipes fixed properly to the ground or underground with plastic pipes covered with concrete.
- 3- Routing cables on the walls of the inverter room shall be inside proper perforated cable tries.
- 4- the location of the pole can be adjusted according to site conditions.
- 5- Perforated Cable try shall be used to protect the cables from the Panels strings to the ground surface, HDPE or PVC pipes shall be used for underground cable laying.

ACTION FOR HUMANITY

Project Name: Restoring Water Access for Vulnerable families in Lahj

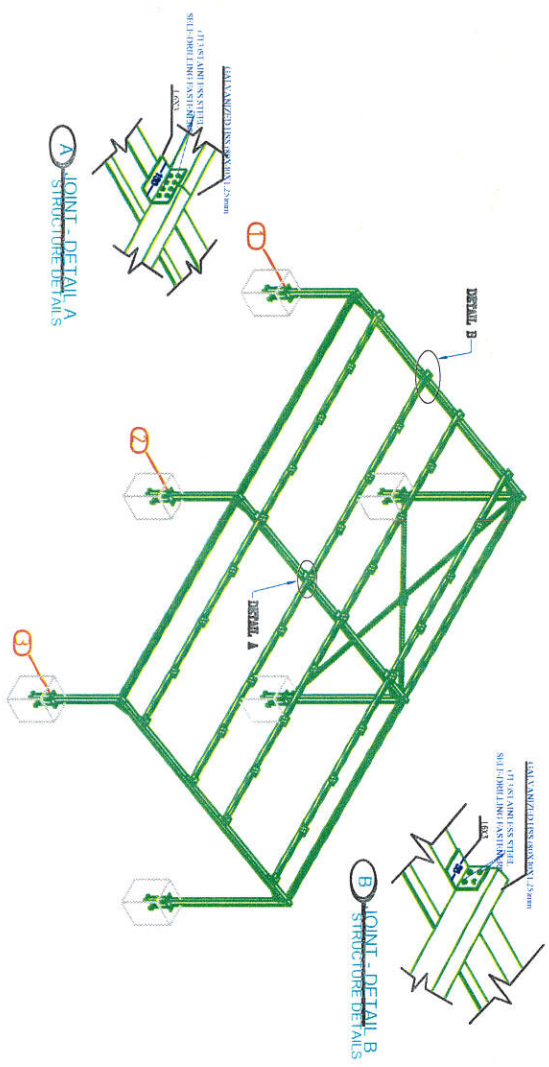
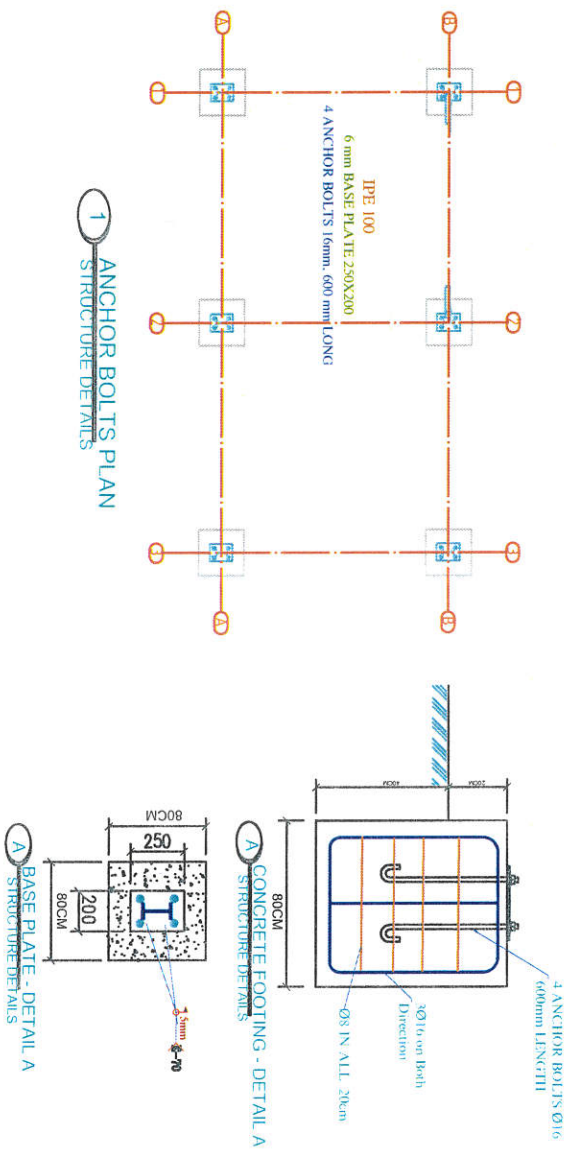
Gavornarate of Lahj - Bir Omar Village -Tuban District

WATER SUPPLY SYSTEM

WATER SUPPLY NETWORK

Electromechanical board

Scale:	1:100	Drawing No.:	4
ATG-2025		Programs & Contributions	Eng.Mohammed A.Salam



ACTION FOR HUMANITY

Project Name: Restoring Water Access for Vulnerable families in Lahji

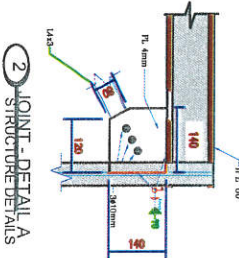
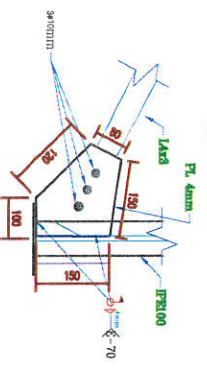
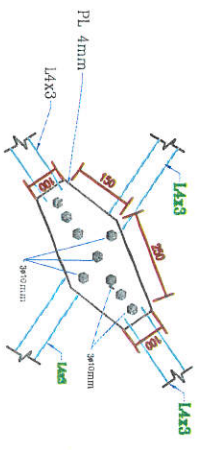
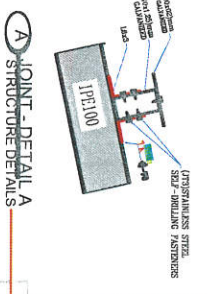
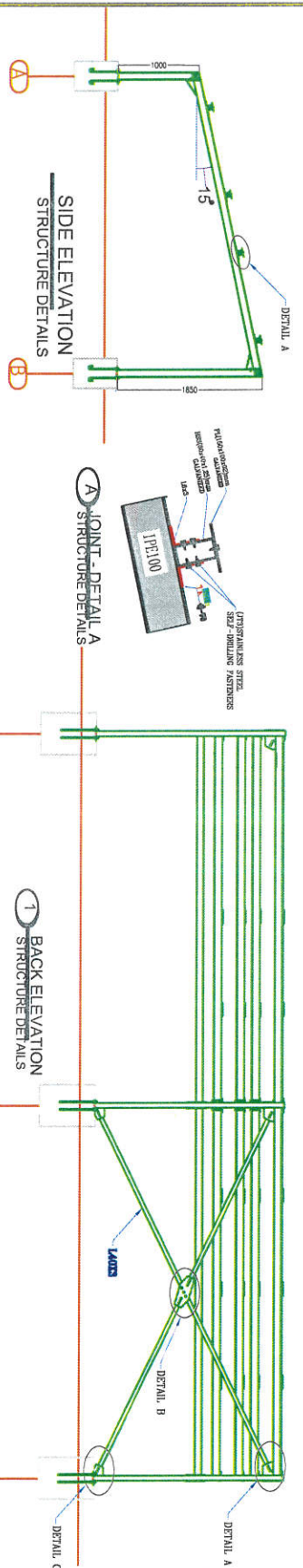
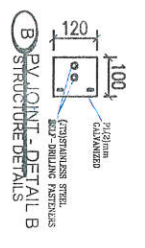
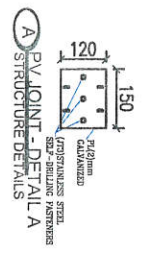
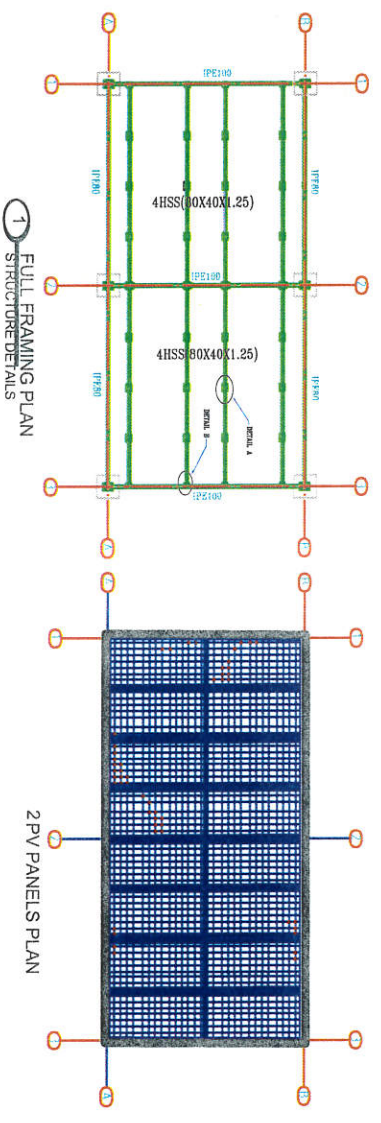
Gavonnarate of Lahji - Bir Omar Village - Tuban District

WATER SUPPLY SYSTEM
Project No.: 1754

WATER SUPPLY NETWORK
Type: Eng. Work and a Scheme

Diagram of Solar Panel Frame
Checked: Eng. Mohamad A. Salam
Checked: Eng. Mohamad A. Salam

Scale: 1:100
Drawing No.: 5
Program Coordinator: Eng. Mohamad A. Salam
AUCG - 2025



ACTION PLAN

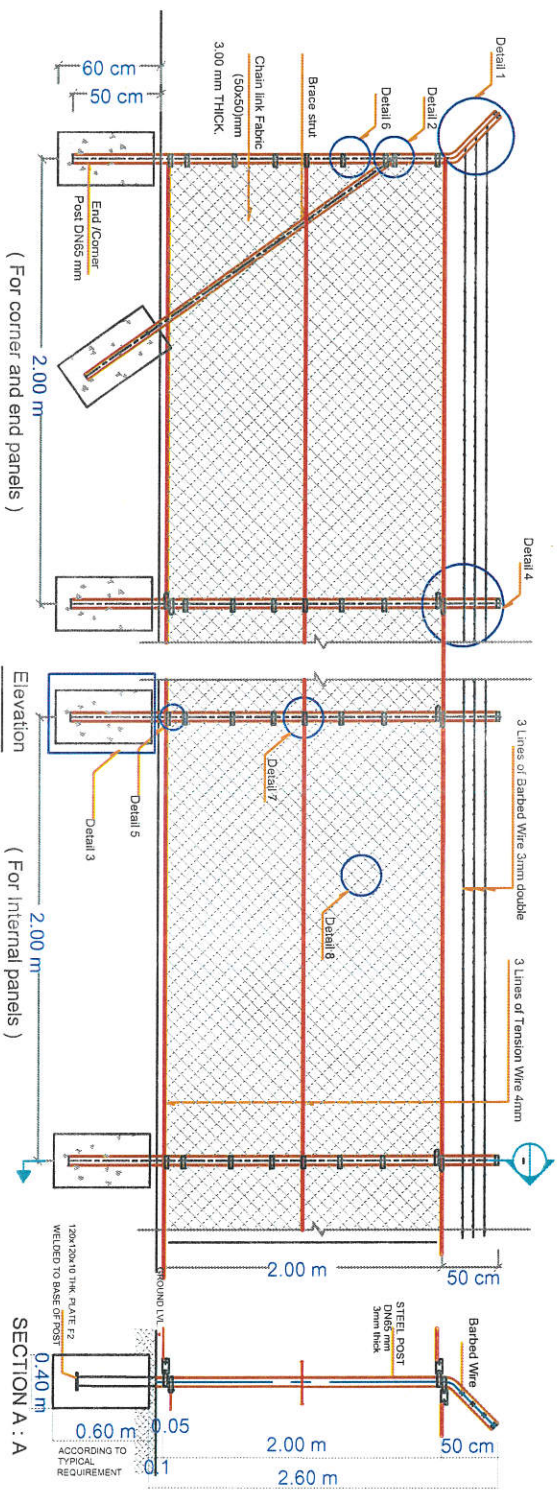
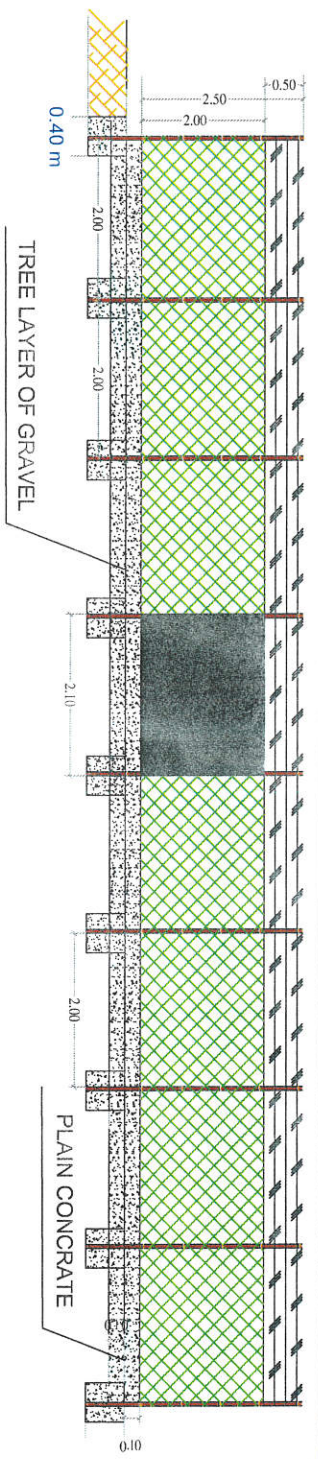
Project Name: Restoring Water Access for Vulnerable families in Lahji

Gavonarate of Lahji - Bir Omar Village - Tuban District

WATER SUPPLY SYSTEM
Project No.: 1754

WATER SUPPLY NETWORK
Desig: ...
Erg: ...

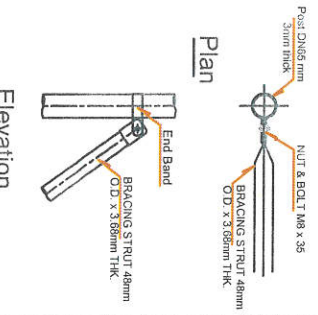
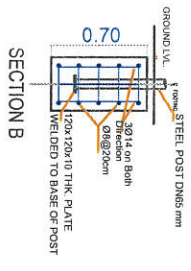
Diagram of Solar Panel Frame Details
Scale: 1:100
Drawing No.: 6
Date: AUCG-2025



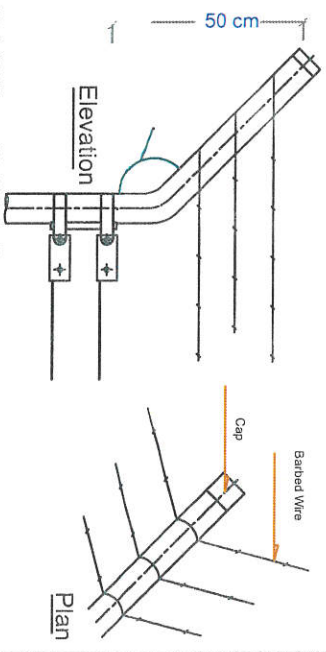
(For corner and end panels)

(For Internal panels)

SECTION A : A
0.40 m



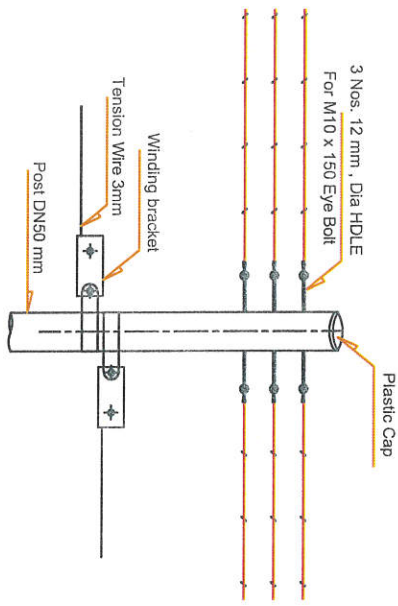
Detail 2 Brace Strut & Tie Bar



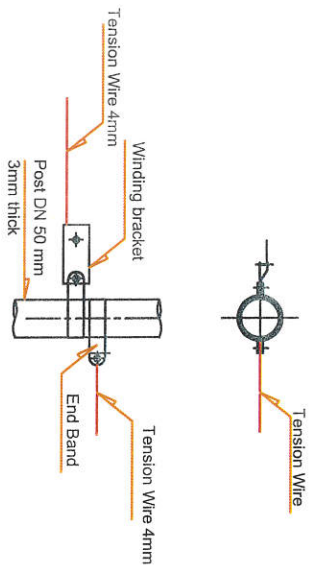
Detail 1 Brace Strut & Tie Bar

Detail 6 FOUNDATION

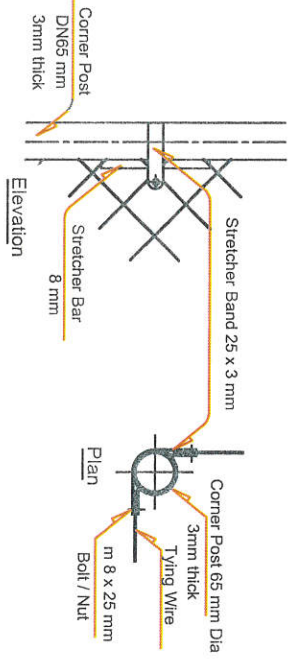
ACTION FOR HUMANITY	
Project Name: Restoring Water Access for Vulnerable families in Lalji Gavornarate of Lalji - Bir Omar Village - Tuban District	
WATER SUPPLY SYSTEM	Project No.: 1754
WATER SUPPLY NETWORK	Dtg.: 1. Design 2. Procurement & Sales 3. Checked 4. Procurement & Sales
Diagram of Protection fence for Solar Energy system in Details	
Scale: 1:100	Drawing No.: 7
A11-2025	



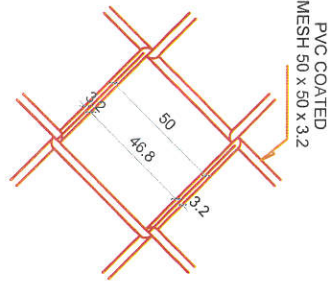
Detail 4 Eye Bolts



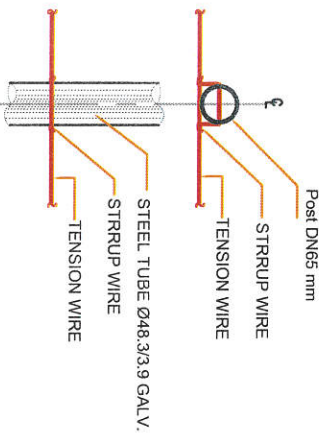
Detail 5 Winding Bracket



Detail 6 Stretcher Bar



DETAIL 8 SPOT



DETAIL 7 TENSION WIRE

ACTION
HUMANITY

Project Name: Restoring Water Access for Vulnerable families in Lahj

Gavornarate of Lahj - Bir Omar Village - Tuban District

WATER SUPPLY SYSTEM

WATER SUPPLY NETWORK

Diagram of Protection fence for Solar Energy system in Details

Scale: 1:100
Drawing No.: 8
Project No.: 1754

