

MEDAIR

each life matters

PROJECT NAME:

Rehabilitation of Lakamah Al-Doki HF YEM-126

DRAWING TITLE:

Site plan Before intervention

DESIGN BY:

ALD WASH TEAM

CHECKED BY:

ALD WASH TEAM

DRAWING NO:

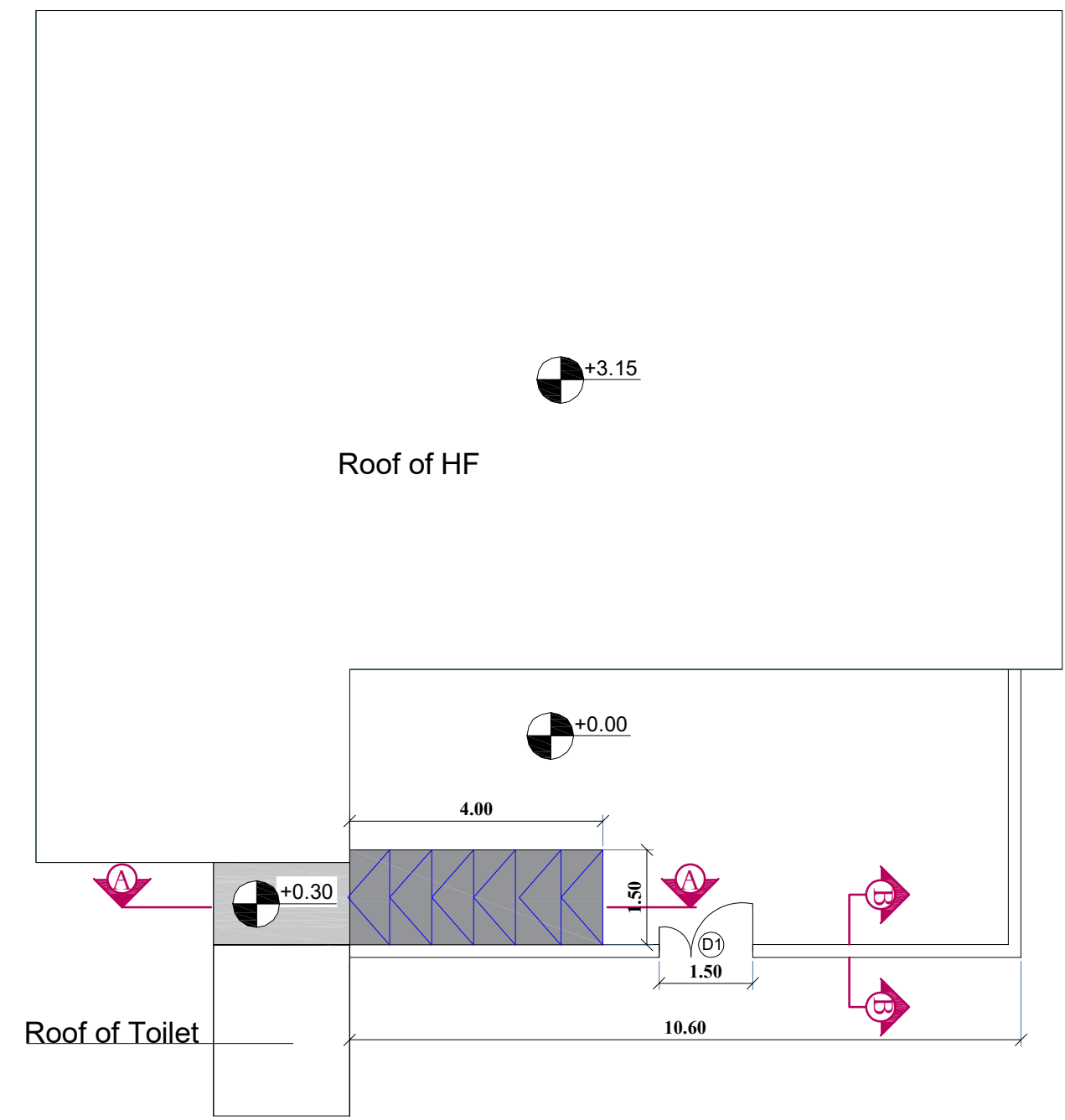
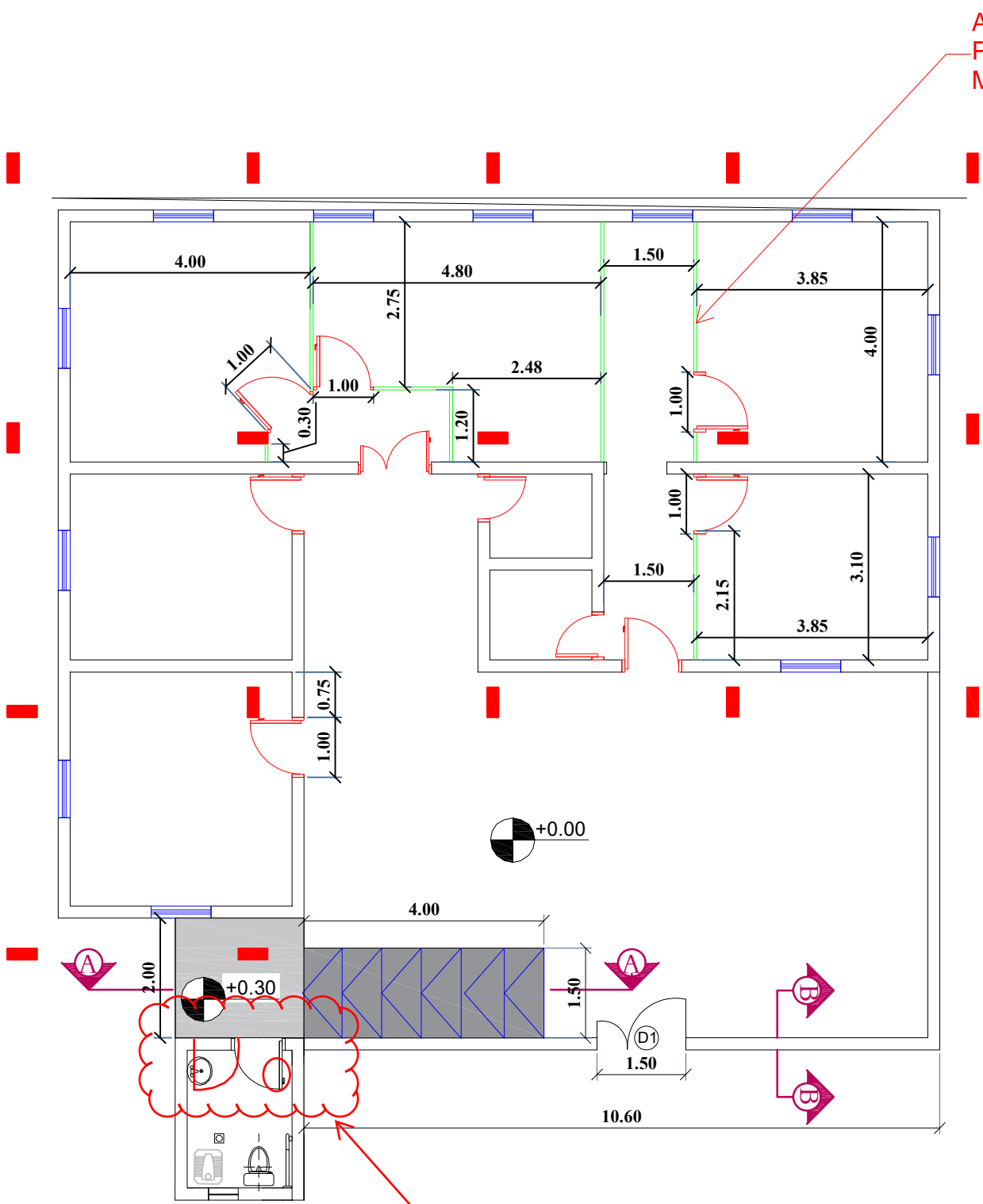
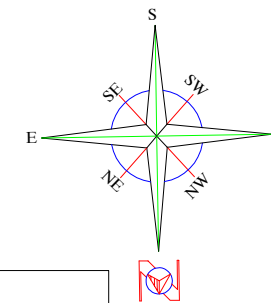
01

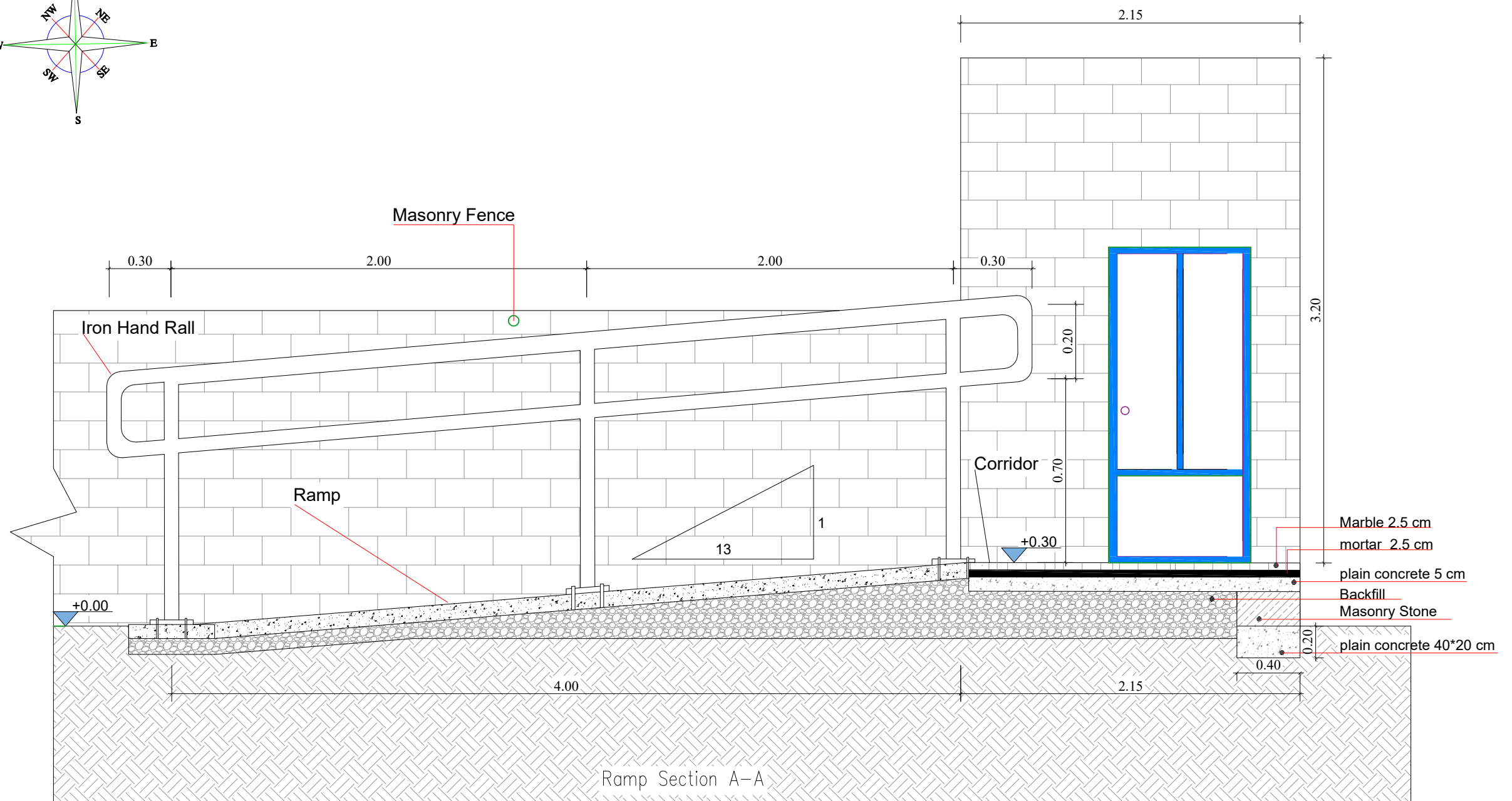
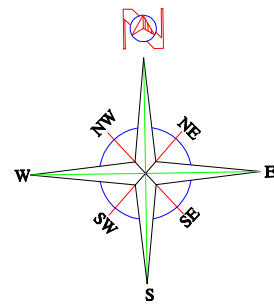
SCALE:

(1:60)

DATE:

(Jun.2022)





MEDAIR

each life matters

PROJECT NAME:

Rehabilitation of Lakamah Al-Doki HF YEM-126

DRAWING TITLE:

Ramp Section A-A

DESIGN BY:

ALD WASH TEAM

CHECKED BY:

ALD WASH TEAM

DRAWING NO:

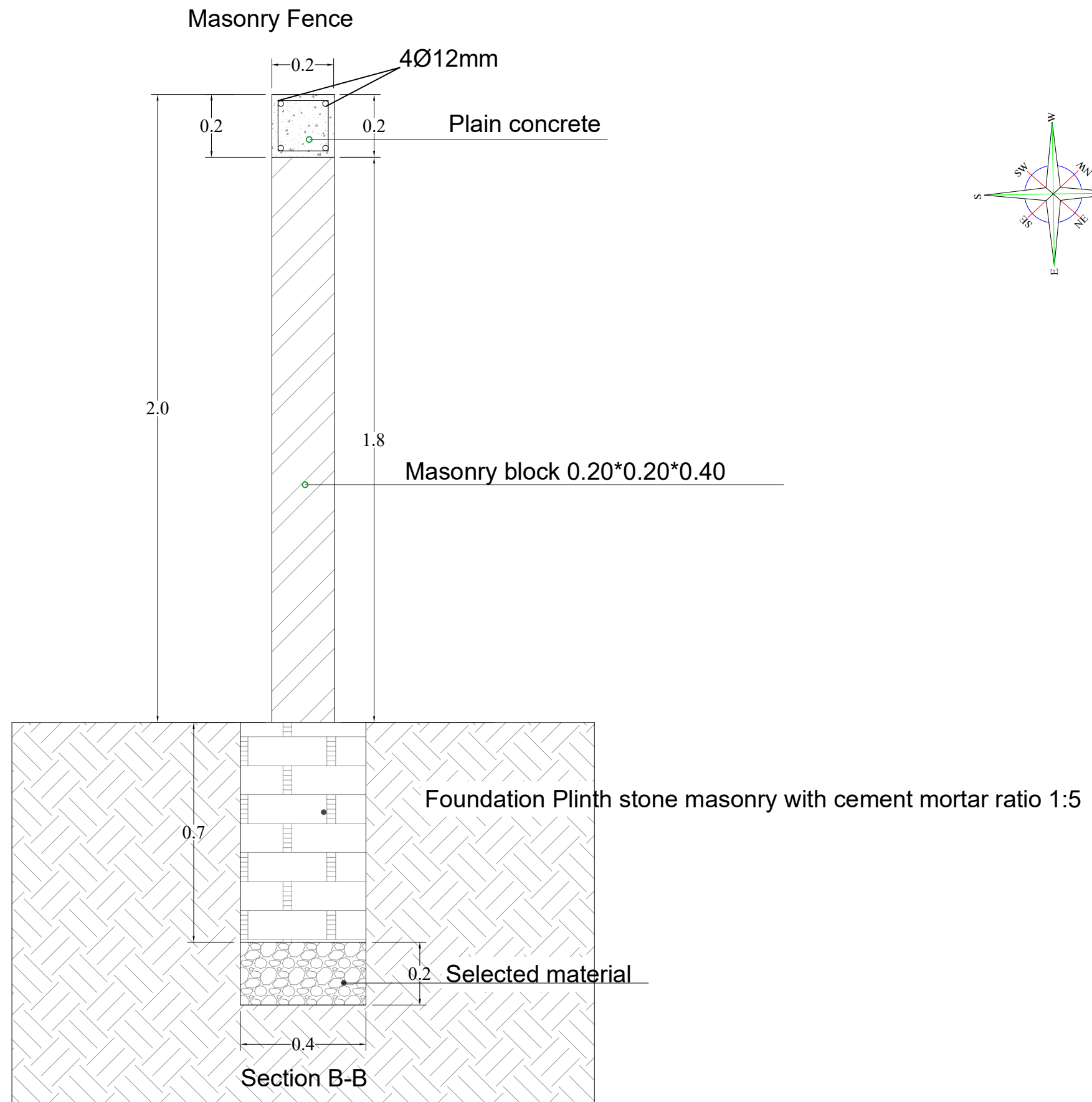
03

SCALE:

(1:30)

DATE:

(Jun.2022)



MEDAIR

each life matters

PROJECT NAME:

Rehabilitation of Lakamah Al-Doki HF YEM-126

DRAWING TITLE:

Masonry Fence Section B-B

DESIGN BY:

ALD WASH TEAM

DRAWING NO:

04

CHECKED BY:

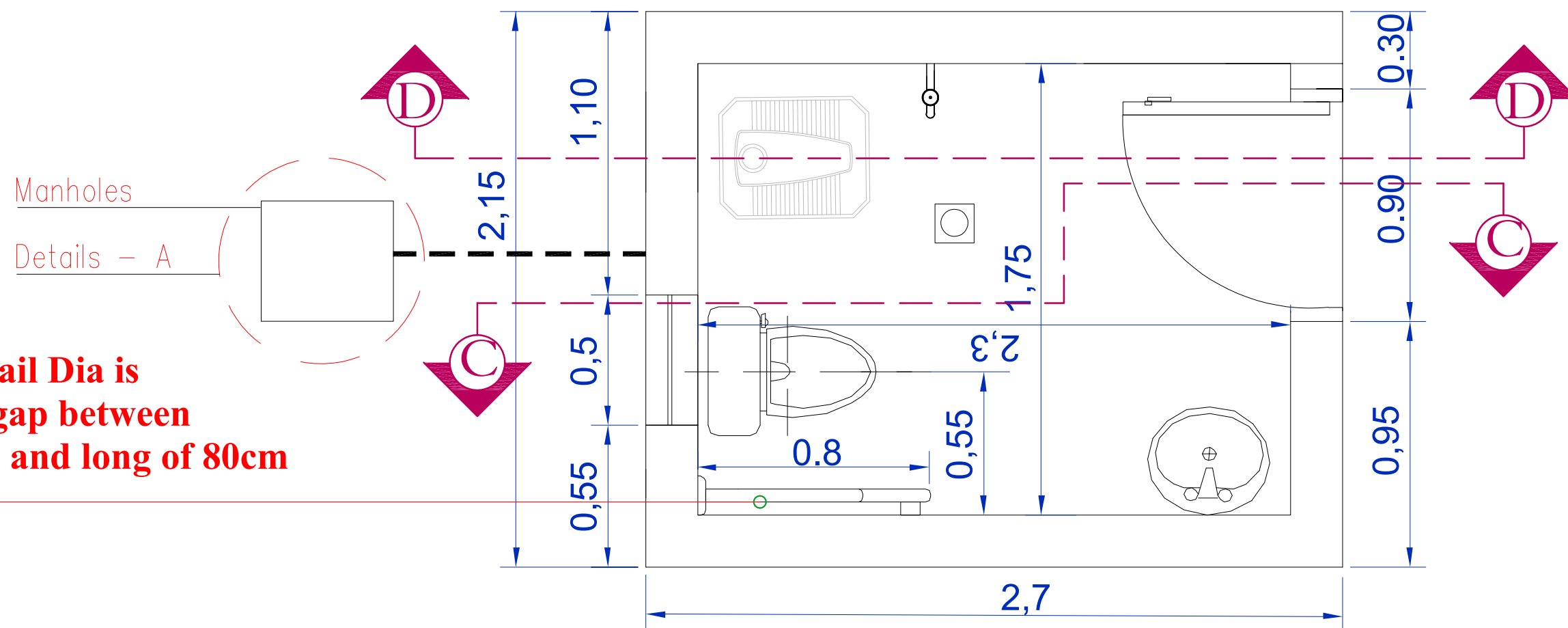
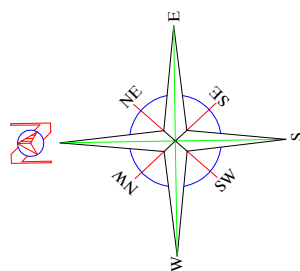
ALD WASH TEAM

SCALE:

(1:15)

DATE:

(Jun.2022)



Aluminum Handrail Dia is 36mm with 36mm gap between the rail & the wall and long of 80cm

MEDAIR

each life matters

PROJECT NAME:

Rehabilitation of Lakamah Al-Doki HF YEM-126

DRAWING TITLE:

Female Toilets Plan

DESIGN BY:

ALD WASH TEAM

CHECKED BY:

ALD WASH TEAM

DRAWING NO:

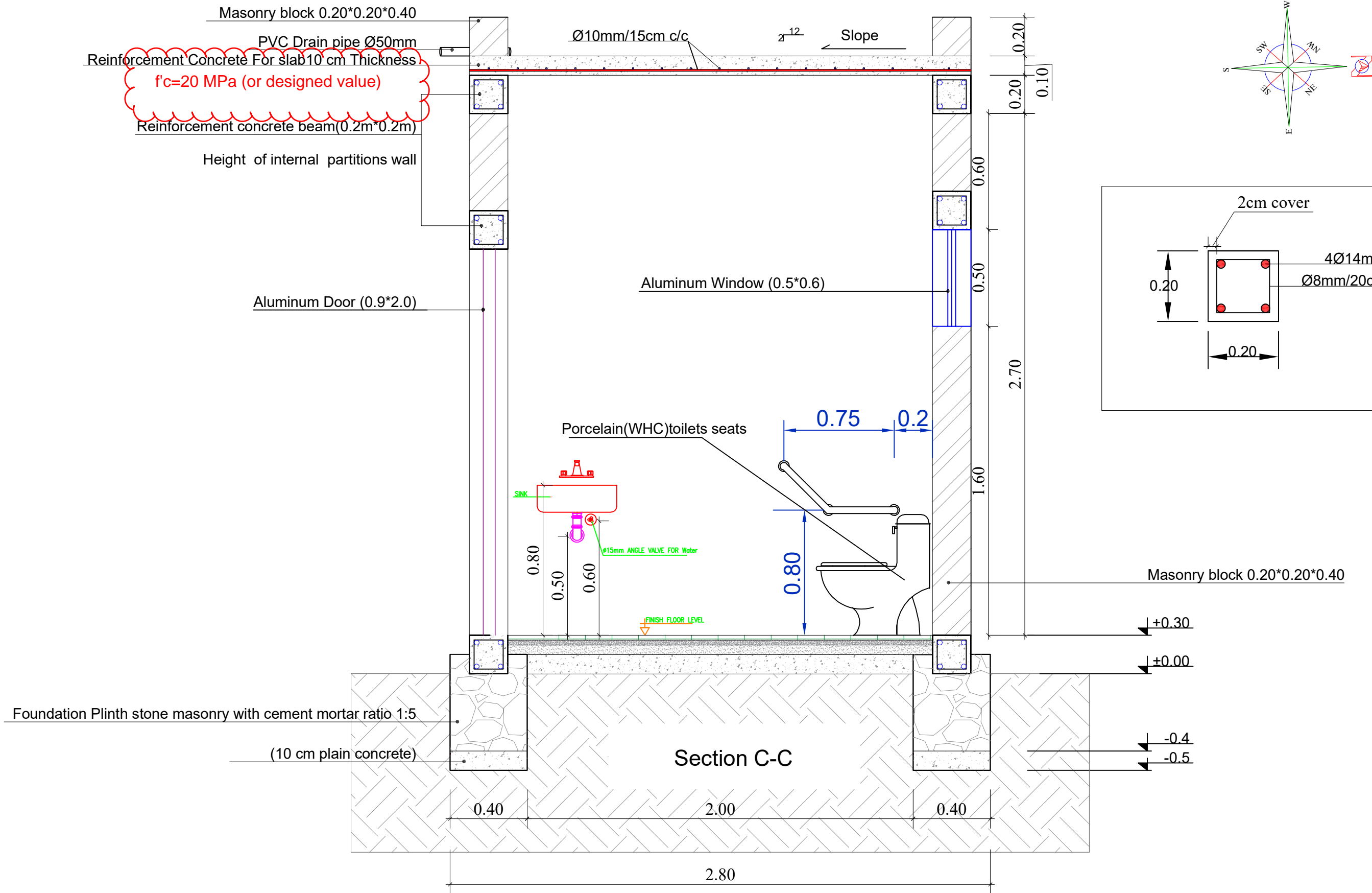
05

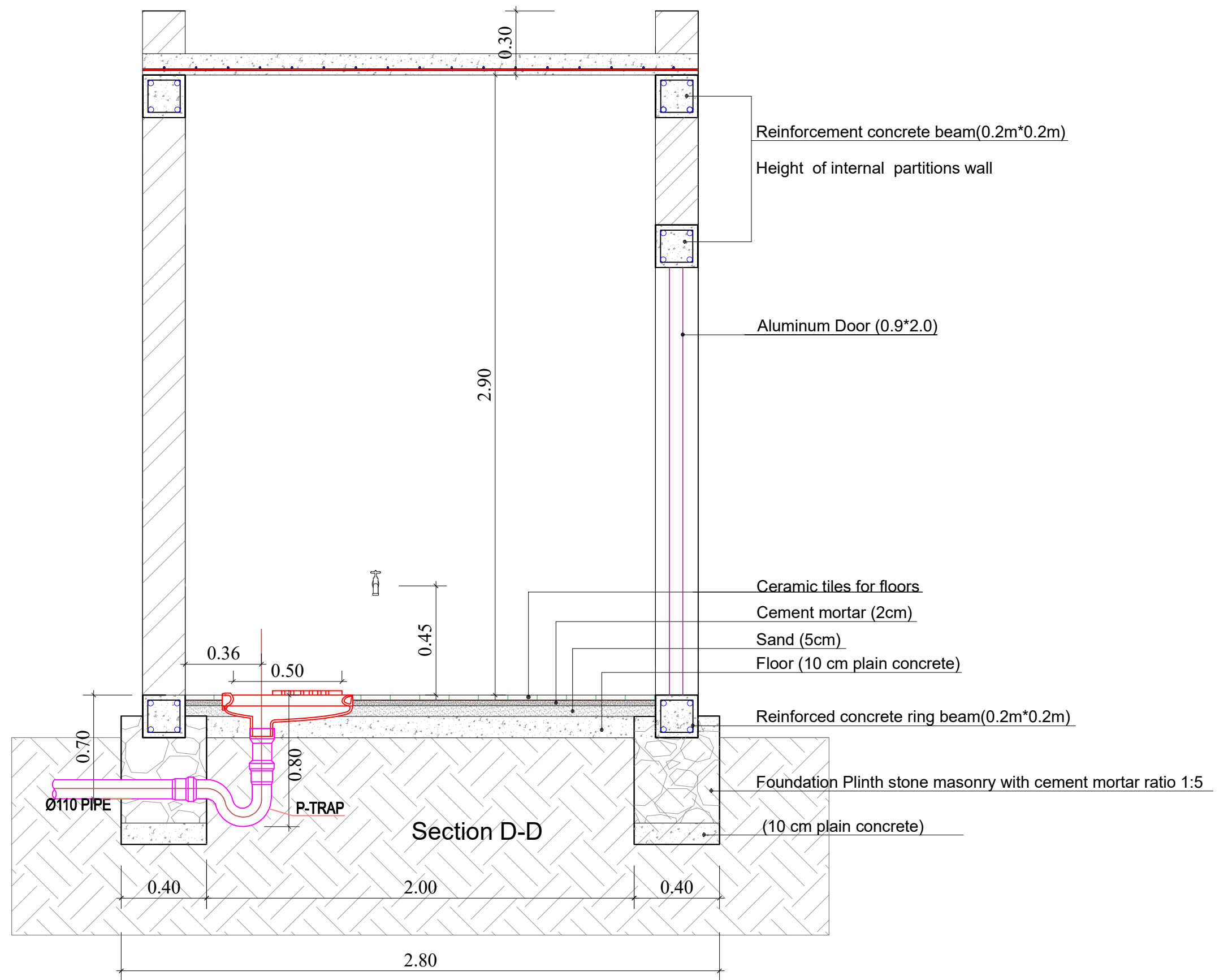
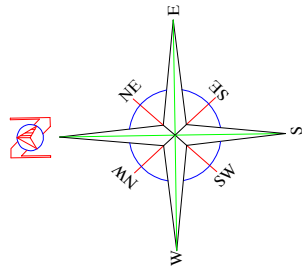
SCALE:

(1:20)

DATE:

(Jun.2022)





MEDAIR

each life matters

PROJECT NAME:

Rehabilitation of Lakamah Al-Doki HF YEM-126

DRAWING TITLE:

Toilets Section D-D

DESIGN BY:

ALD WASH TEAM

CHECKED BY:

ALD WASH TEAM

DRAWING NO:

07

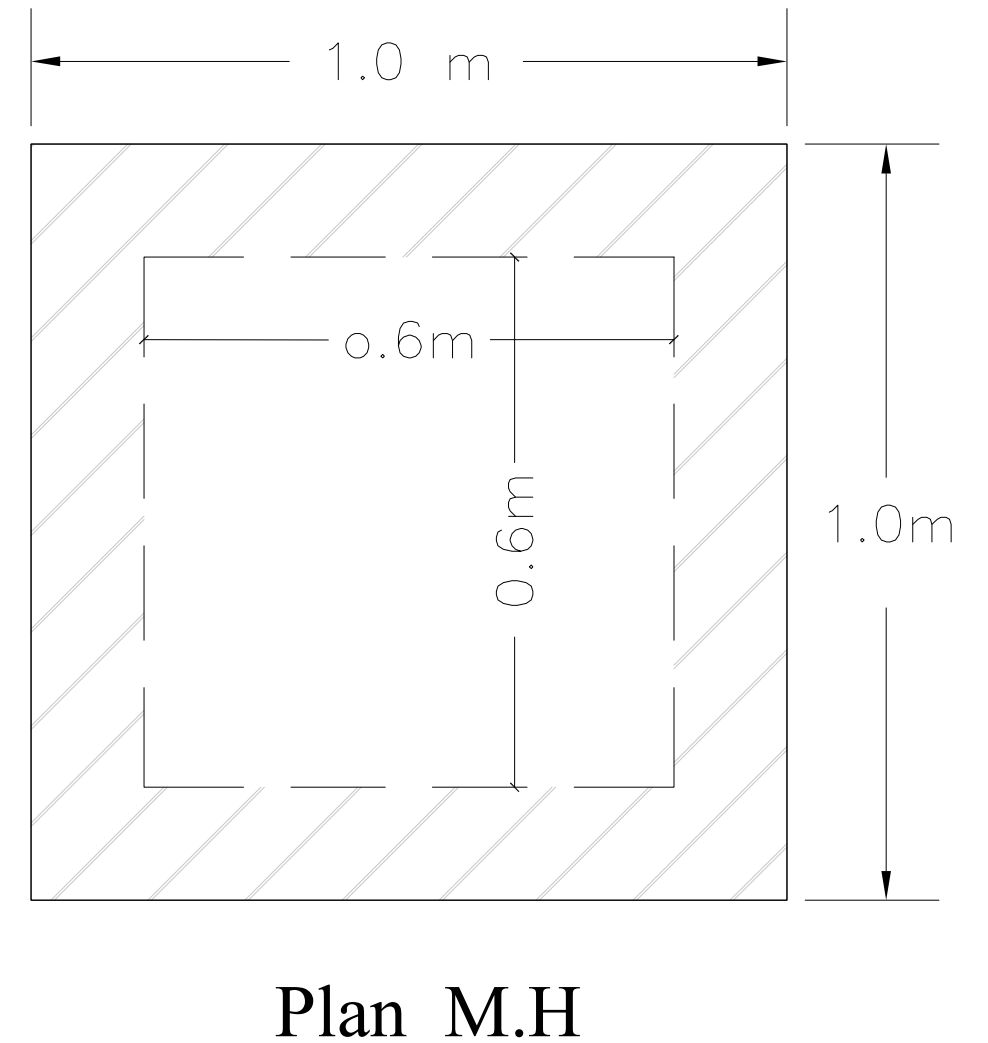
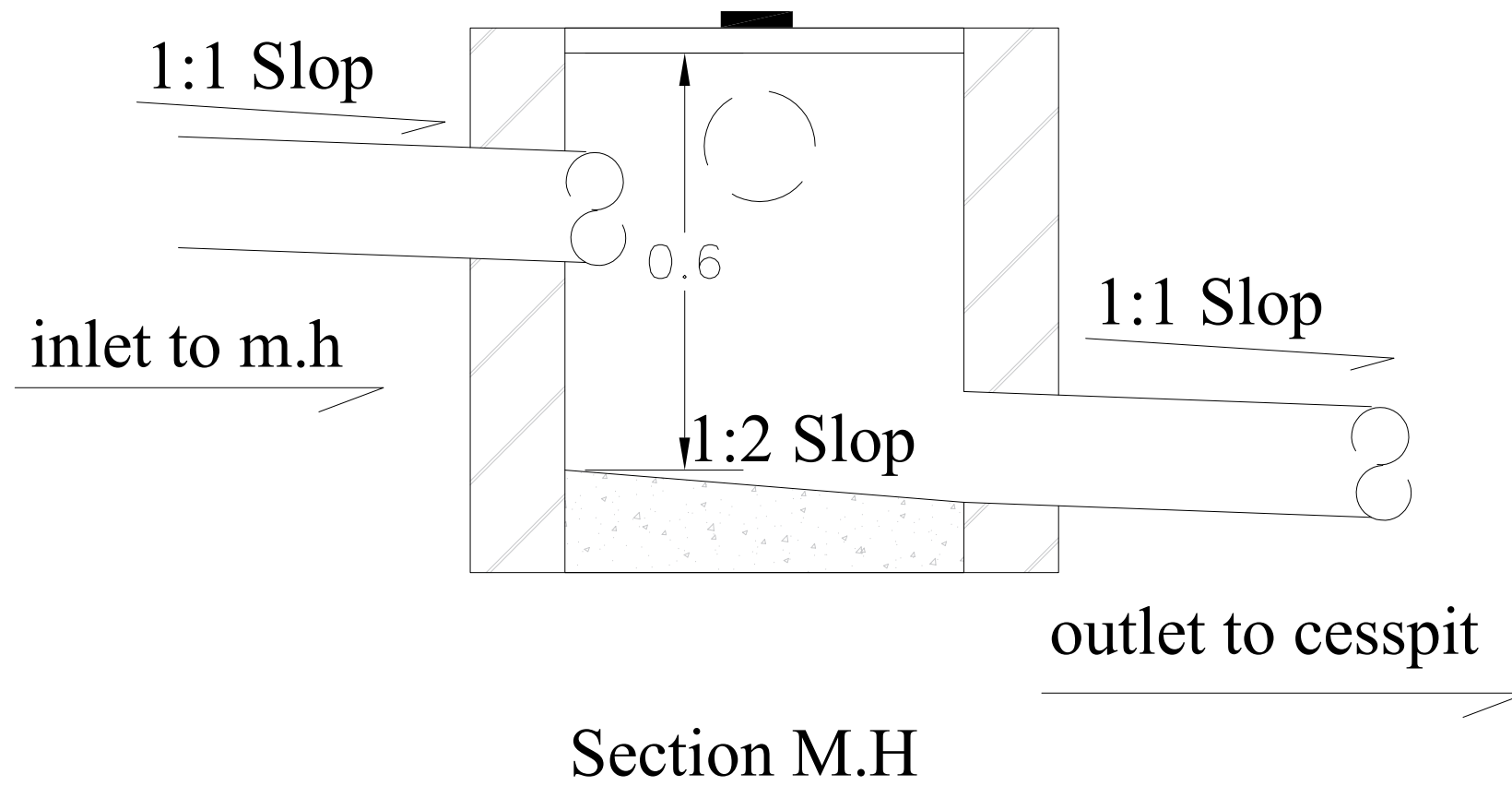
SCALE:

(1:20)

DATE:

(Jun.2022)

Details - A



MEDAIR

each life matters

PROJECT NAME:

Rehabilitation of Lakamah Al-Doki HF YEM-126

DRAWING TITLE:

Detail-A(For Connection of Tow Manholes)

DESIGN BY:

ALD WASH TEAM

CHECKED BY:

ALD WASH TEAM

DRAWING NO:

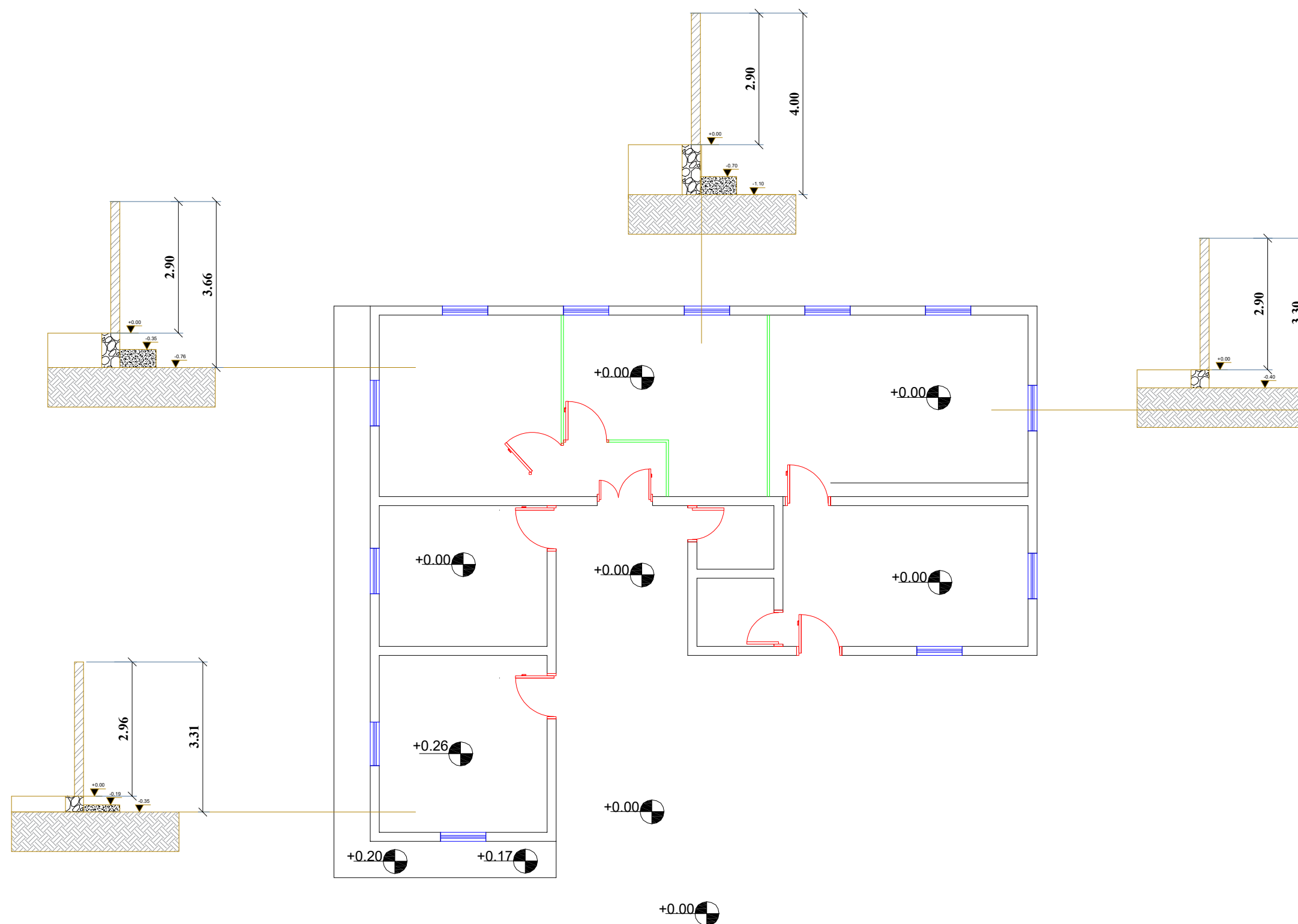
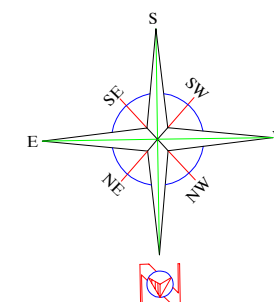
08

SCALE:

(1:10)

DATE:

(Jun.2022)



MEDAIR

each life matters

PROJECT NAME:

Rehabilitation of Lakamah Al-Doki HF YEM-126

DRAWING TITLE:

Detail of health facility Levels

DESIGN BY:

ALD WASH TEAM

CHECKED BY:

ALD WASH TEAM

DRAWING NO:

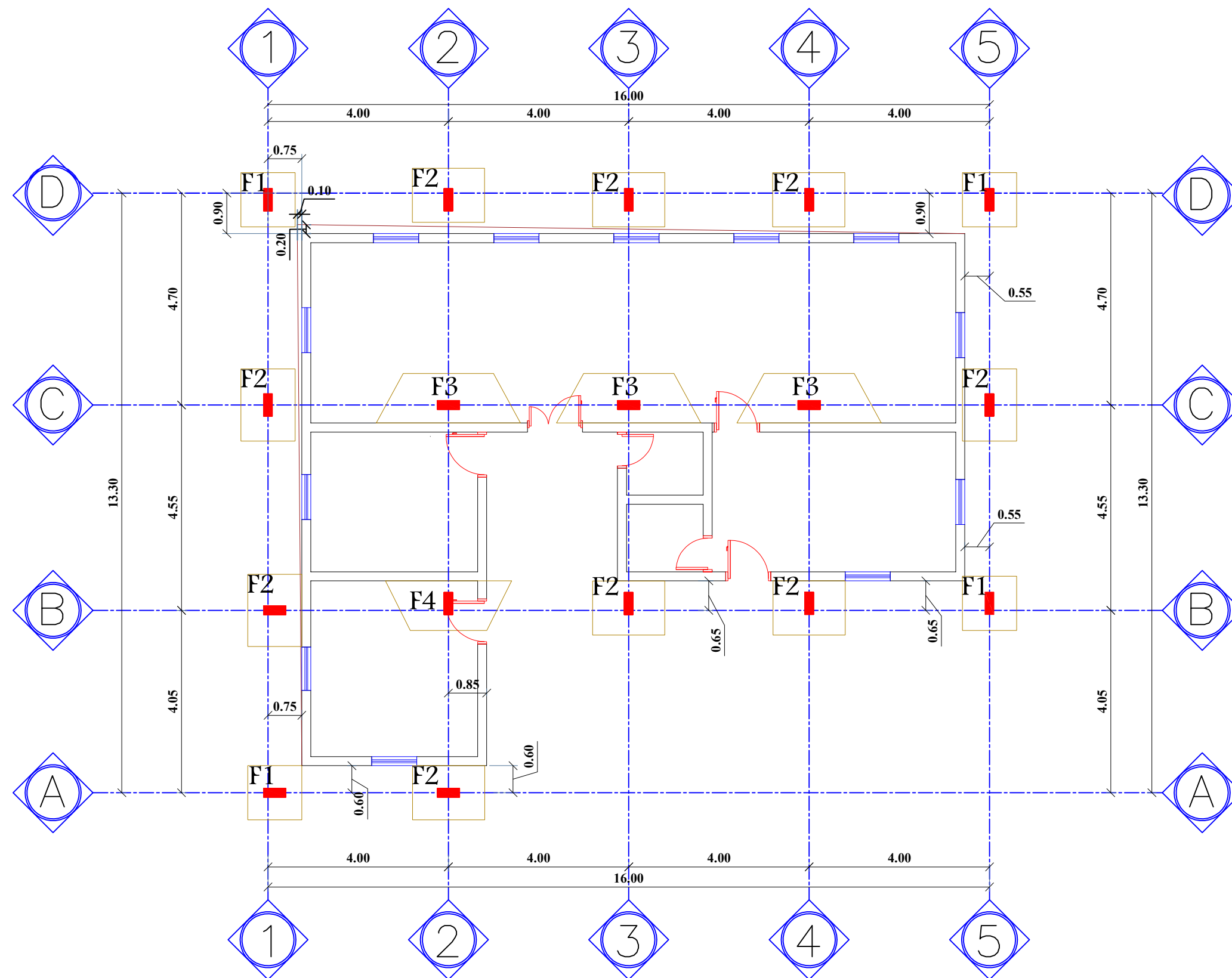
09

SCALE:

(1:100)

DATE:

(Jun.2022)



MEDAIR

each life matters

PROJECT NAME:

Rehabilitation of Lakamah Al-Doki HF YEM-126

DRAWING TITLE:

Plan of Footing At HF

DESIGN BY:

ALD WASH TEAM

CHECKED BY:

ALD WASH TEAM

DRAWING NO:

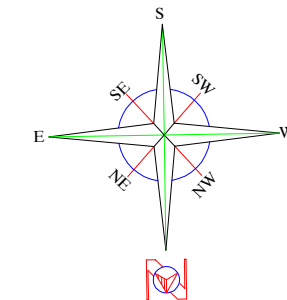
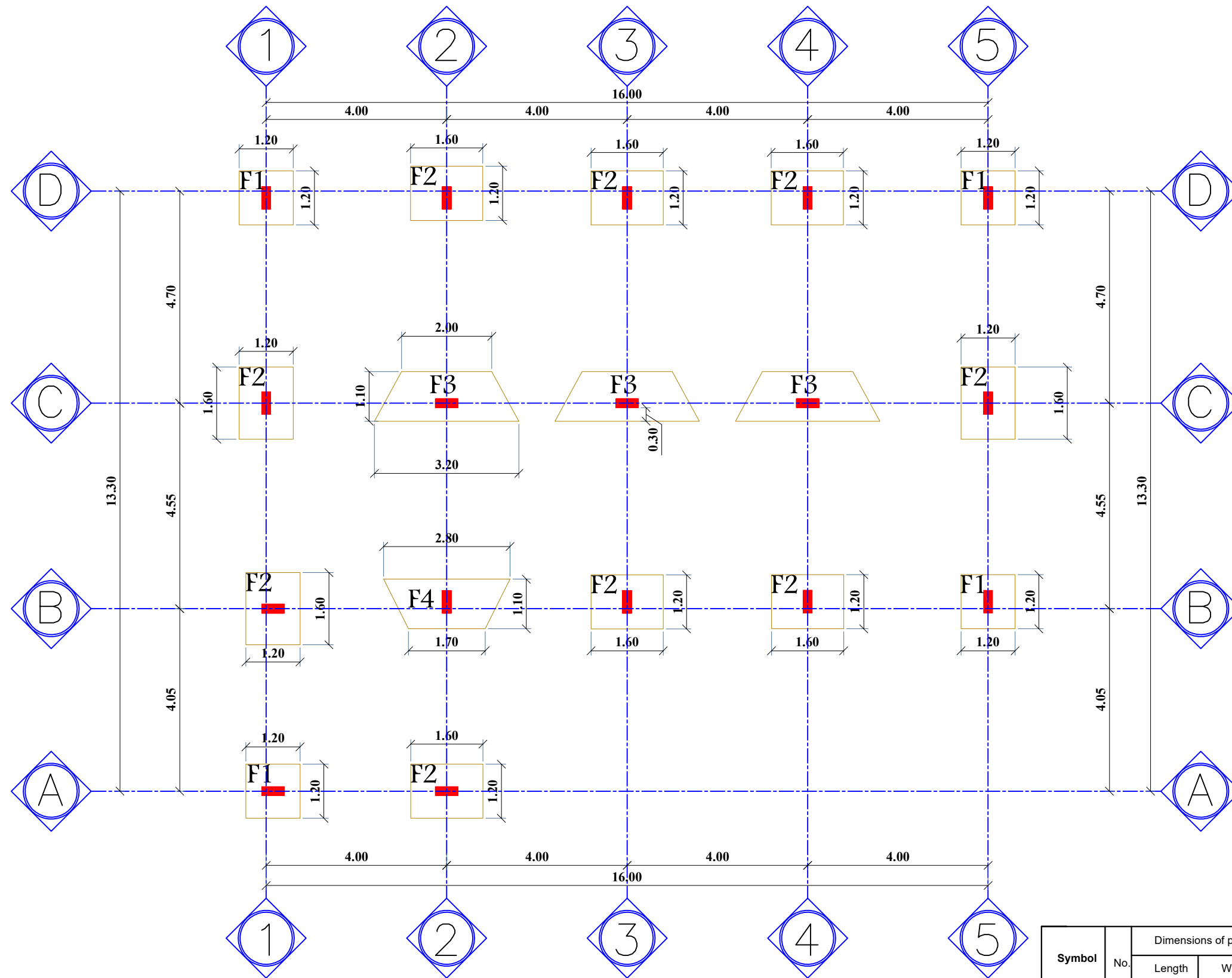
10

SCALE:

(1:100)

DATE:

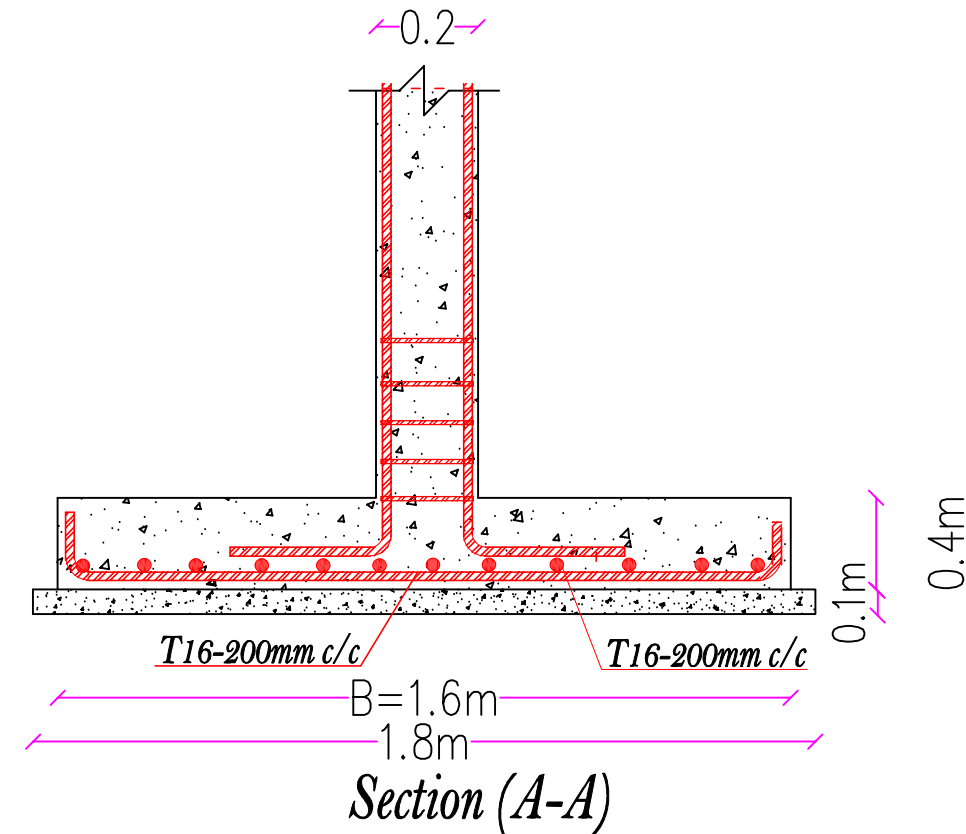
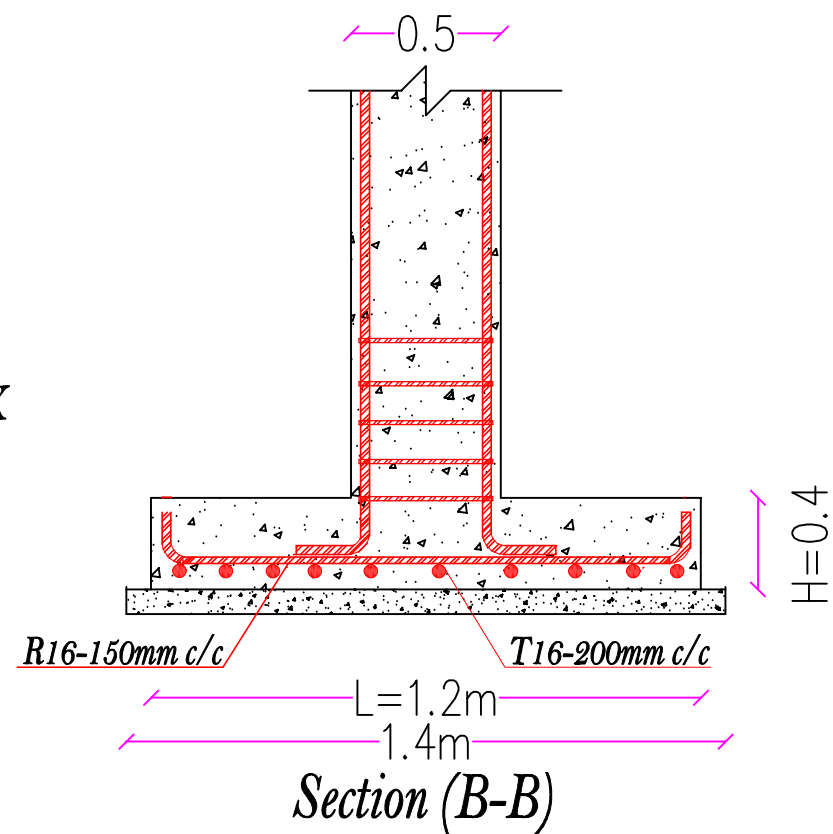
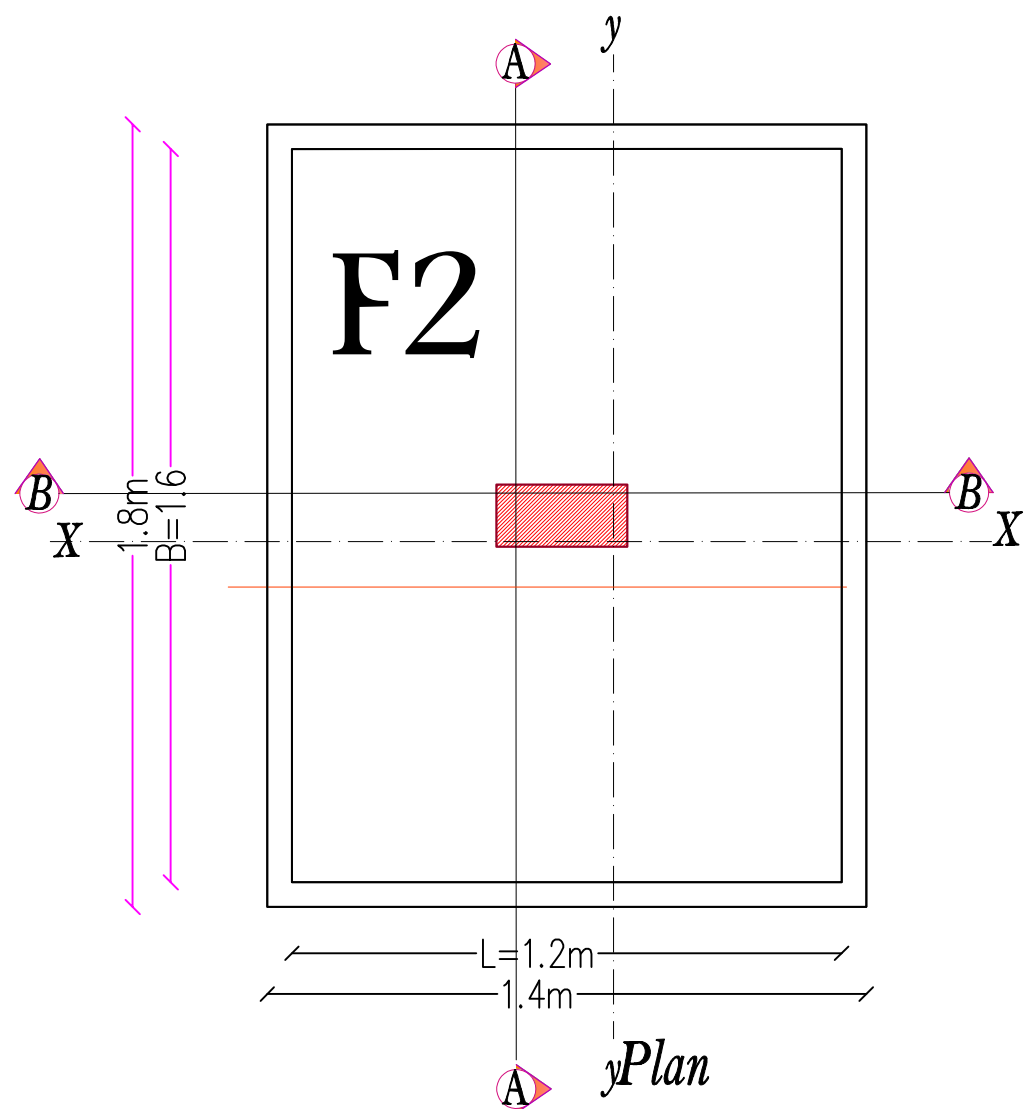
(Jun.2021)



Notes:
.fcu=20N/mm²
.fy=250N/mm²
.All dimensions are in m

TABLE OF FOOTING

Symbol	No.	Dimensions of plain concrete			Dimensions of Reinforcement concrete			Bottom Reinforcement		Tope Reinforcement in each direction
		Length cm	Width cm	Depth cm	Length cm	Width cm	Depth cm	Along width	Along length	
F1	4	140	140	10	120	120	40	Ø16mm/@15cm	Ø16mm/@15cm	2Ø16mm/M
F2	9	180	140	10	160	120	40	Ø16mm/@15cm	Ø16mm/@15cm	2Ø16mm/M
F3 Trapezoidal	3	340-220	130	10	320-200	110	40	Ø16mm/@15cm	Ø16mm/@10cm	2Ø16mm/M
F4 Trapezoidal	1	300-190	130	10	280-170	110	40	Ø16mm/@15cm	Ø16mm/@10cm	2Ø16mm/M



Typical Details For Isolated Footing (F2)

$f'_c=20\text{ MPa}$ (or designed value)

MEDAIR

each life matters

PROJECT NAME:

Rehabilitation of Lakamah Al-Doki HF YEM-126

DRAWING TITLE:

Section Reinforcement Rebars Detailing for Models of Footing Symbol F2

DESIGN BY:

ALD WASH TEAM

DRAWING NO:

12

SCALE:

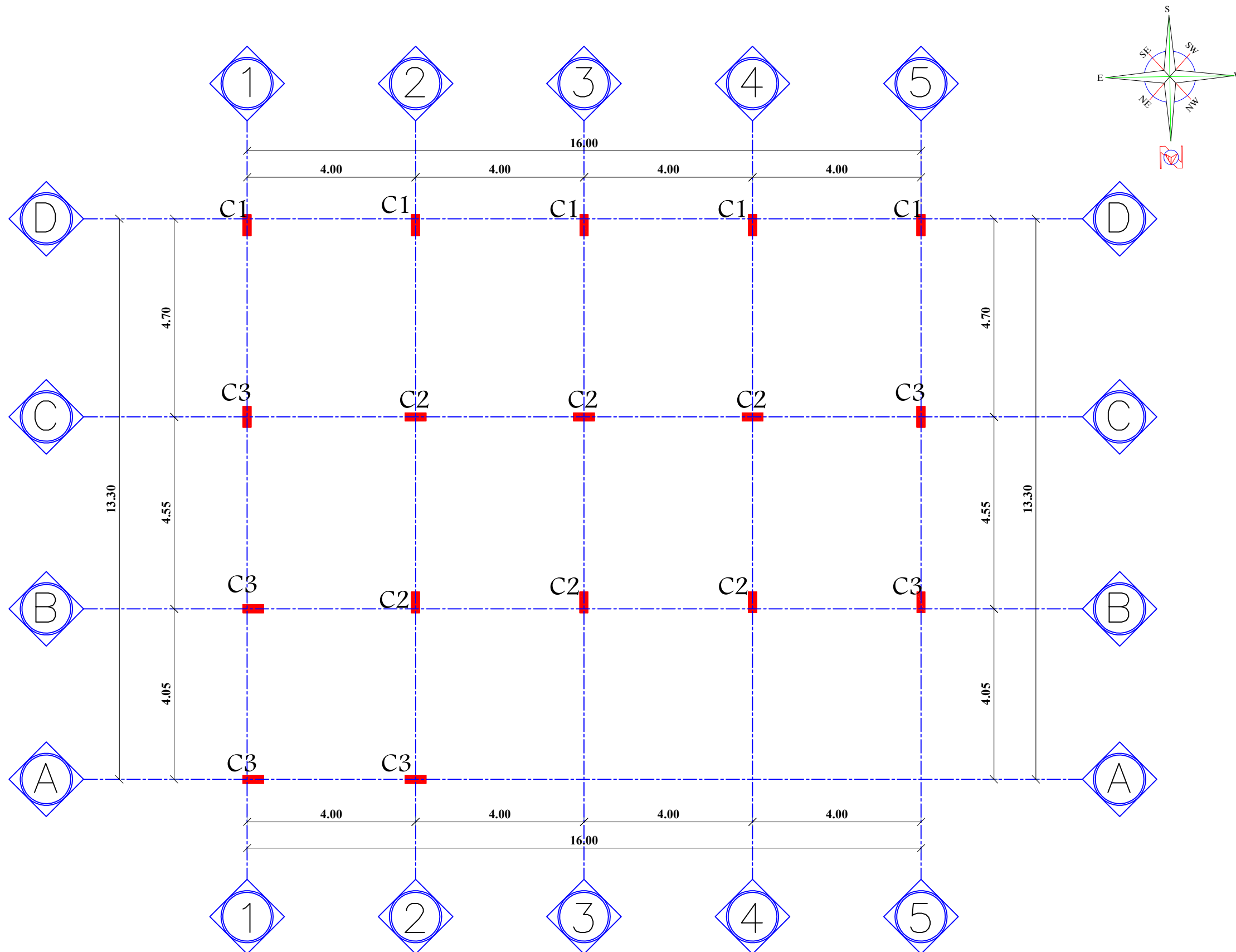
(No SC)

CHECKED BY:

ALD WASH TEAM

DATE:

(Jun.2022)



MEDAIR

each life matters

PROJECT NAME:

Rehabilitation of Lakamah Al-Doki HF YEM-126

DRAWING TITLE:

Structural Plan of Columns &
Table of Reinforcement Rebars

DESIGN BY:

ALD WASH TEAM

CHECKED BY:

ALD WASH TEAM

DRAWING NO:

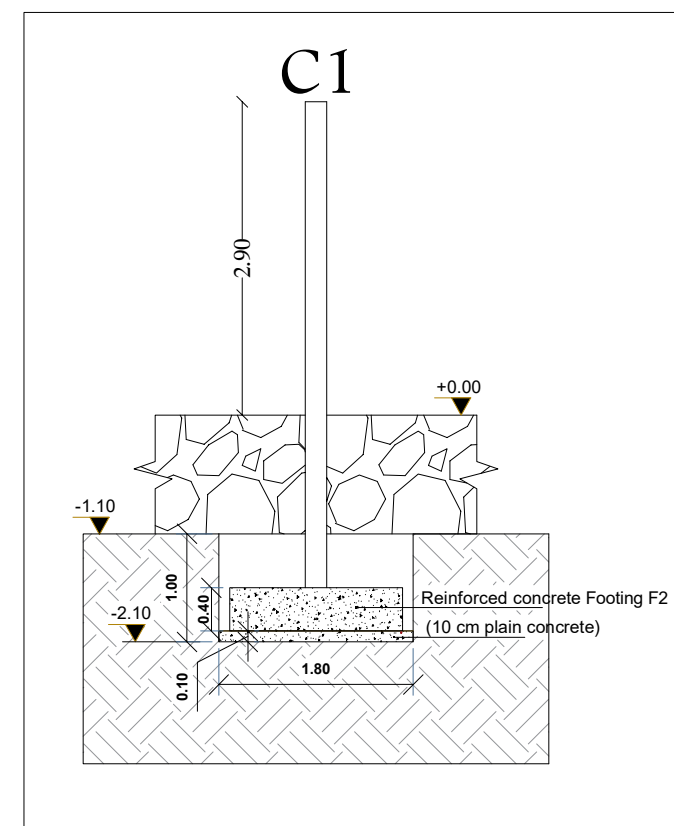
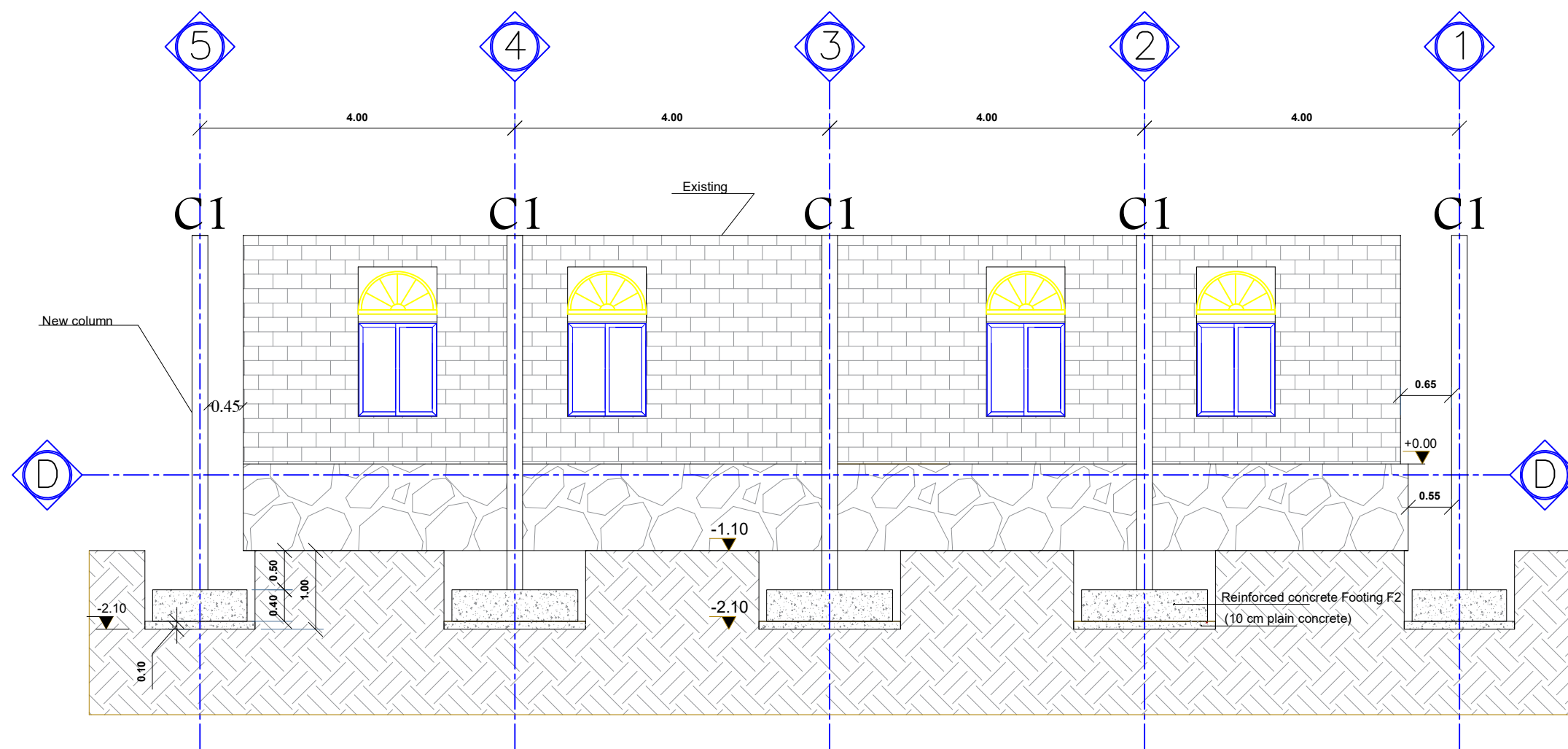
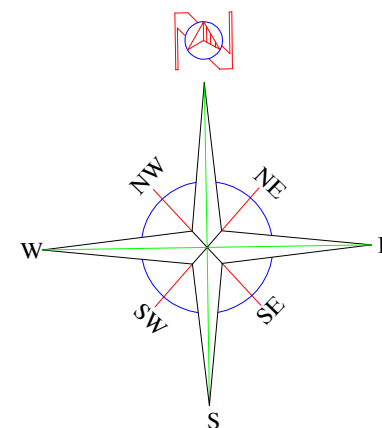
13

SCALE:

(1:100)

DATE:

(Jun.2022)



MEDAIR

each life matters

PROJECT NAME:

Rehabilitation of Lakamah Al-Doki HF YEM-126

DRAWING TITLE:

Elevation view and Section At Axis D-D

DESIGN BY:

ALD WASH TEAM

CHECKED BY:

ALD WASH TEAM

DRAWING NO:

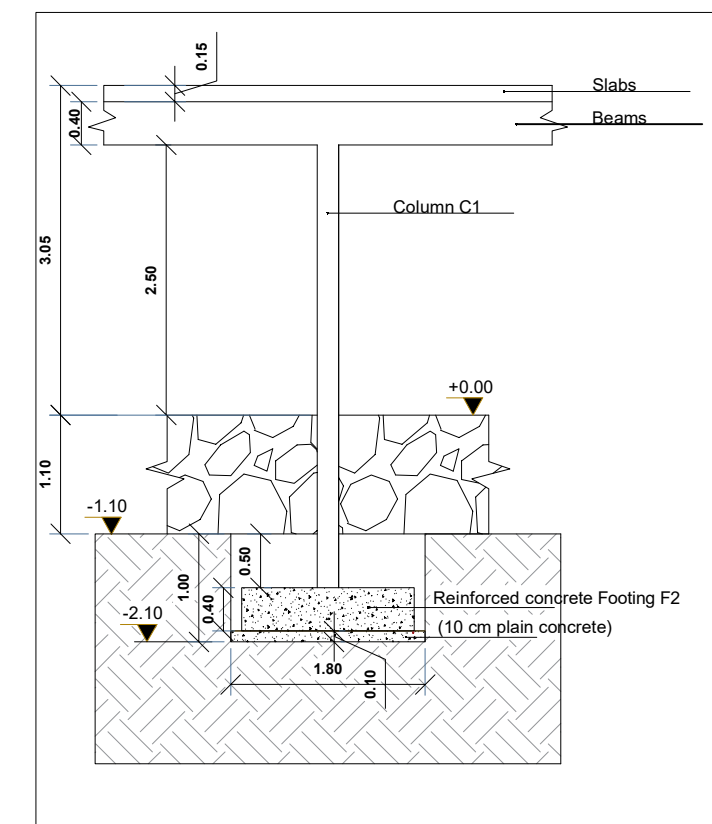
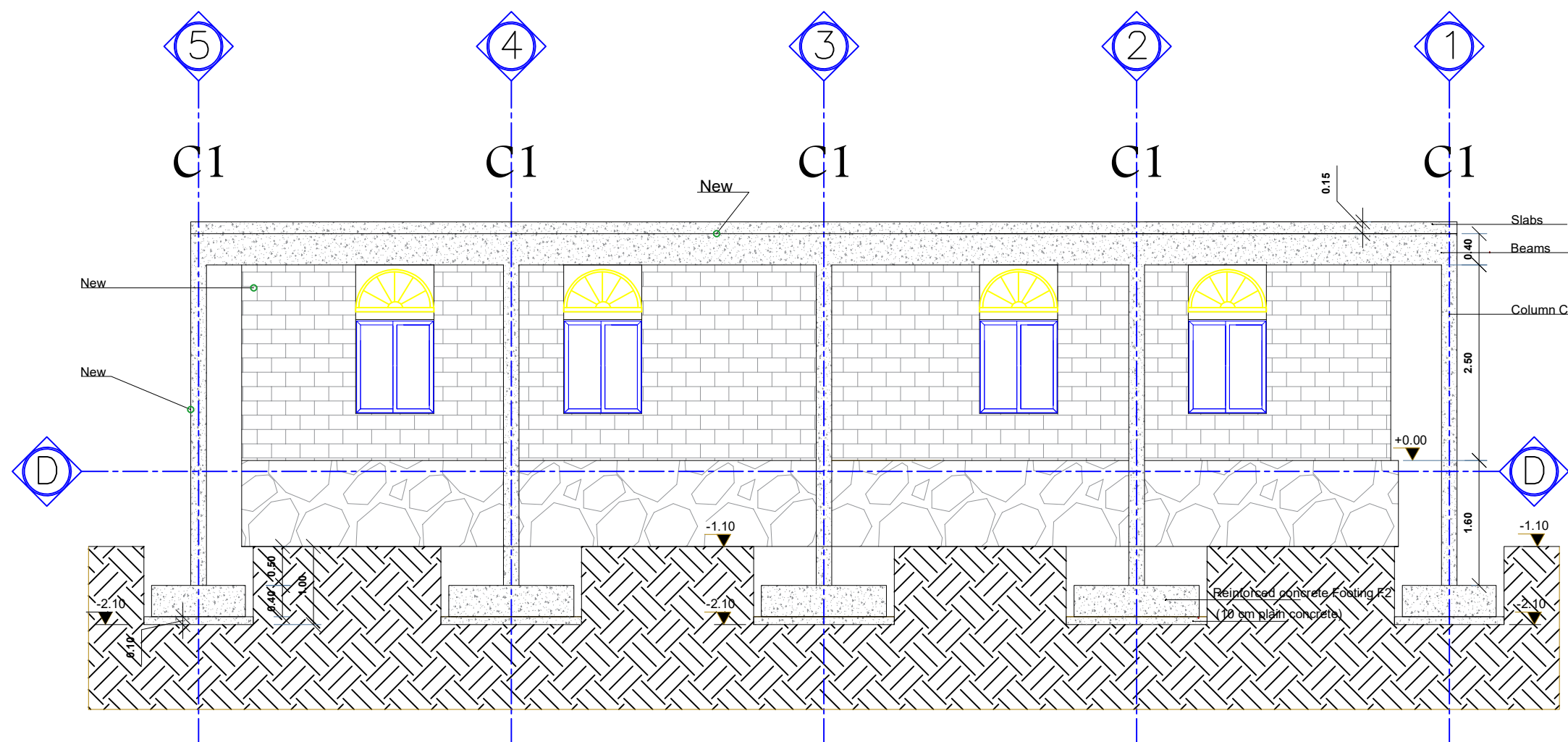
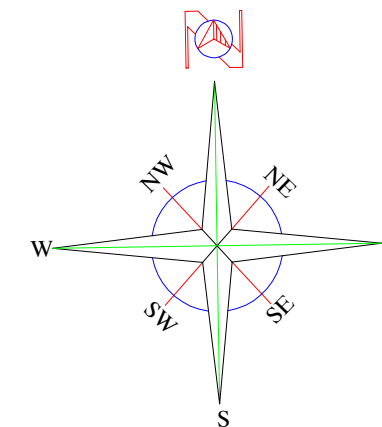
14

SCALE:

(1:70)

DATE:

(Jun.2022)



MEDAIR

each life matters

PROJECT NAME:

Rehabilitation of Lakamah Al-Doki HF YEM-126

DRAWING TITLE:

Elevation view and Section At Axis D-D

DESIGN BY:

ALD WASH TEAM

CHECKED BY:

ALD WASH TEAM

DRAWING NO:

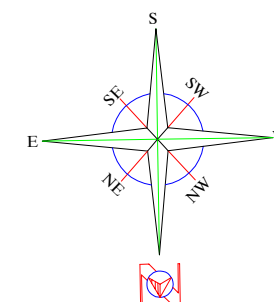
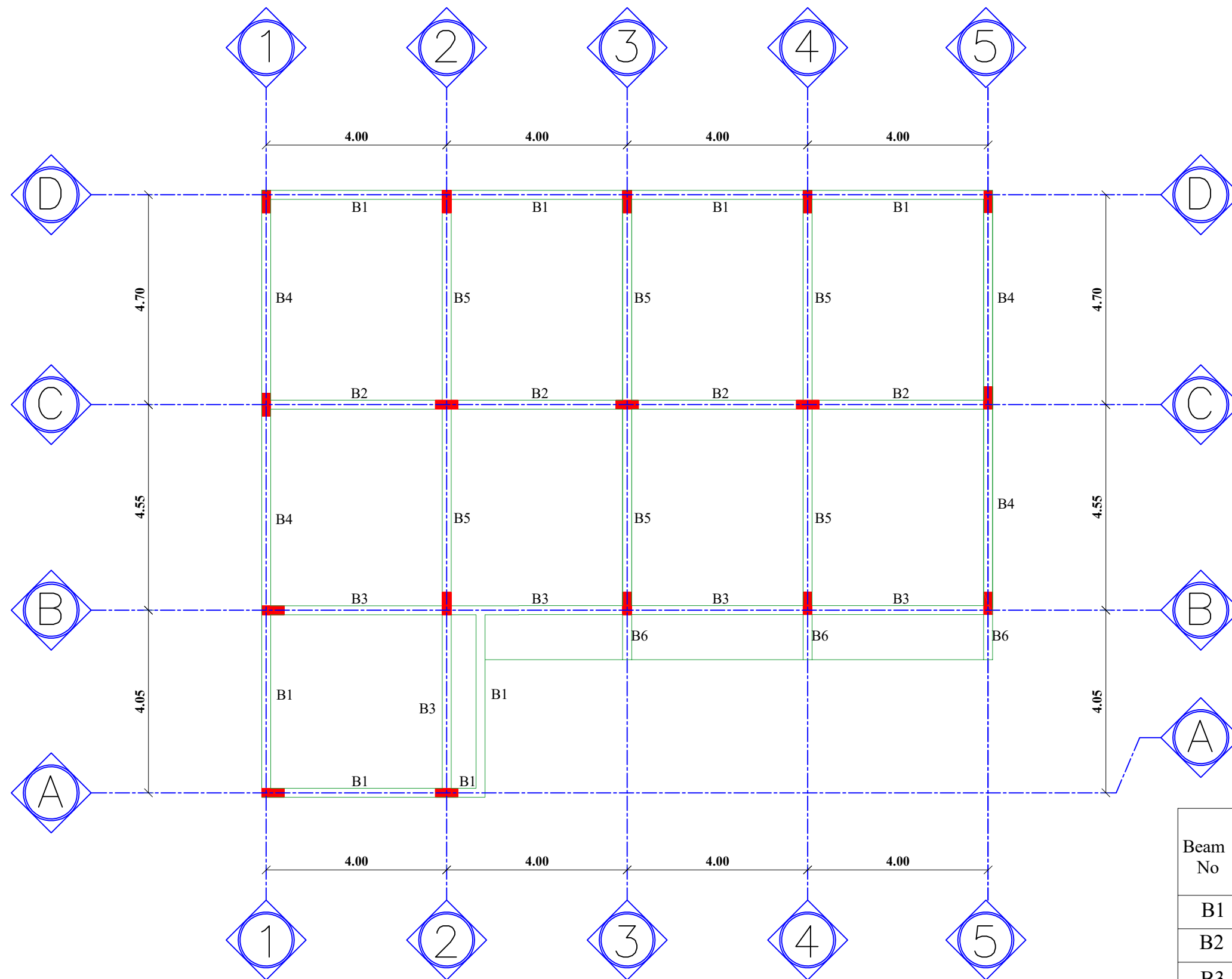
15

SCALE:

(1:70)

DATE:

(Jun.2022)



Notes:
.fcu=20N/mm²
.fy=250N/mm²
.Cover = 20mm
.All dimensions are in m unless specified.
.All dimensions in Table are in cm

Table of Reinforcement Beams

Beam No	Dimensions		Continuous rebars		Addition rebars		Links rebars	
	Width cm	Height cm	Bottom	Top	Mid of span 8 Ø	Top at columns	Mid of span 8 Ø	near columns 8 Ø
B1	20	55	2Ø16	2Ø16	1Ø16	1Ø16	@20cm c/c	@15cm c/c
B2	20	55	2Ø16	3Ø16	1Ø16	2Ø16	@20cm c/c	@15cm c/c
B3	20	55	2Ø16	3Ø16	1Ø16	1Ø16	@20cm c/c	@15cm c/c
B4	20	55	2Ø16	2Ø16	1Ø16	2Ø16	@20cm c/c	@15cm c/c
B5	20	55	2Ø16	2Ø16	2Ø16	3Ø16	@20cm c/c	@15cm c/c
B6	20	55	2Ø16	2Ø16	—	—	@20cm c/c	@15cm c/c

SHOWS
ADDITIONAL ON
DWG PG. 17

MEDAIR

each life matters

PROJECT NAME:

Rehabilitation of Lakamah Al-Doki HF YEM-126

DRAWING TITLE:

Structural Plan of Beams
& Table of Reinforcement Rebars

DESIGN BY:

ALD WASH TEAM

CHECKED BY:

ALD WASH TEAM

DRAWING NO:

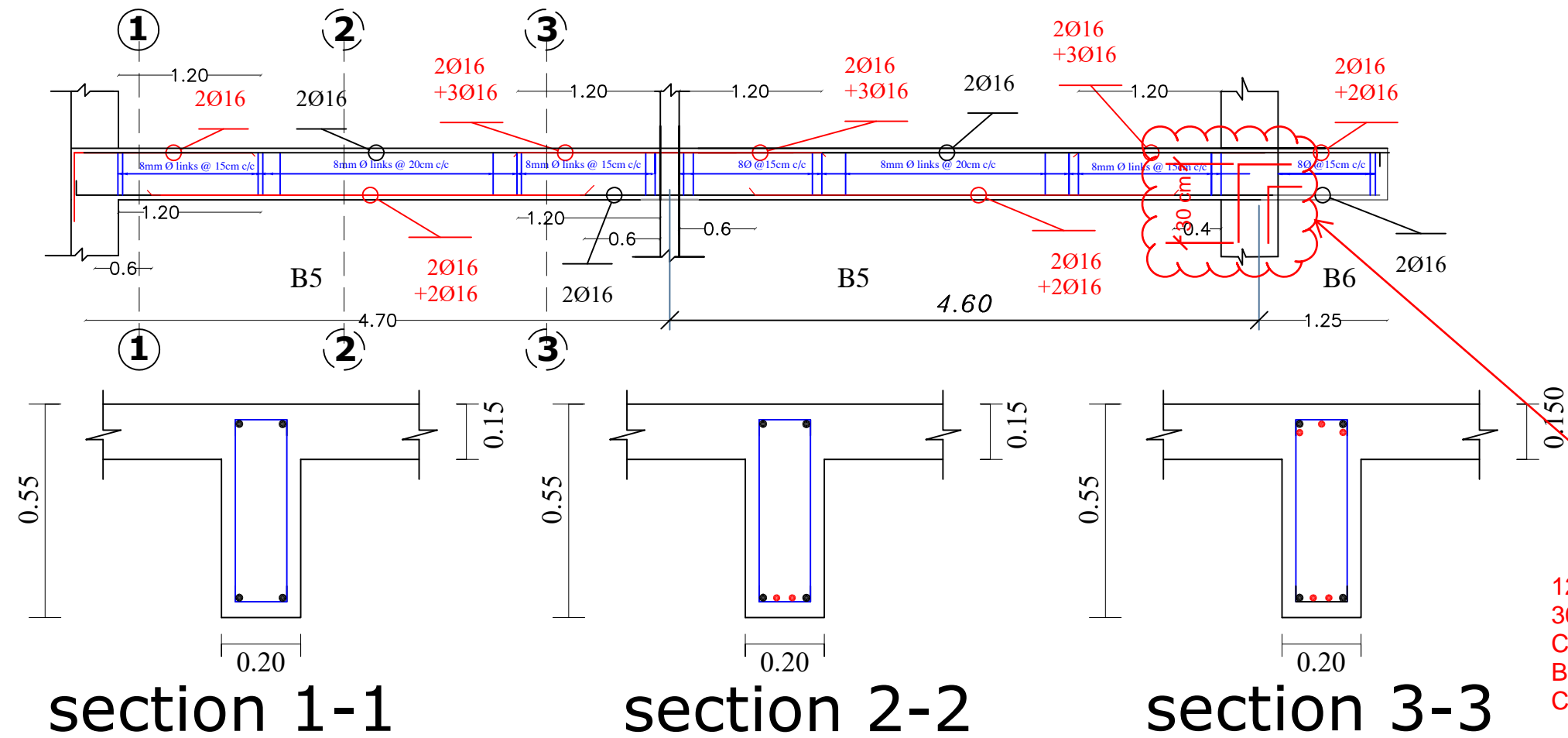
16

SCALE:

(1:100)

DATE:

(Jun.2022)



beam	Position	Bottom Reinforcement		Top Reinforcement		Links Spacing
		Continuous	Addetional	Continuous	Addetional	
B5	L	2 Ø 16	—	2 Ø 16	—	15 cm c/c
	Mid	2 Ø 16	2 Ø 16	2 Ø 16	—	20 cm c/c
	R	2 Ø 16	—	2 Ø 16	3 Ø 16	15 cm c/c
B5	L	2 Ø 16	—	2 Ø 16	3 Ø 16	15 cm c/c
	Mid	2 Ø 16	2 Ø 16	2 Ø 16	—	20 cm c/c
	R	2 Ø 16	—	2 Ø 16	3 Ø 16	15 cm c/c
Contilever		2 Ø 16	—	2 Ø 16	2 Ø 16	15 cm c/c

RECOMMEND INCREASING TO
3 DIA. 16 BARS ADDITIONAL
TOP REINFORCEMENT
RATHER THAN TWO SINCE
CANTILEVERED BEAM

BEAM 6

MEDAIR

each life matters

PROJECT NAME:

Rehabilitation of Lakamah Al-Doki HF YEM-126

DRAWING TITLE:

Reinforcement Rebars Detailing of Beams
at Frame of Axis (4-4)& Sections

DESIGN BY:

ALD WASH TEAM

DRAWING NO:

17

CHECKED BY:

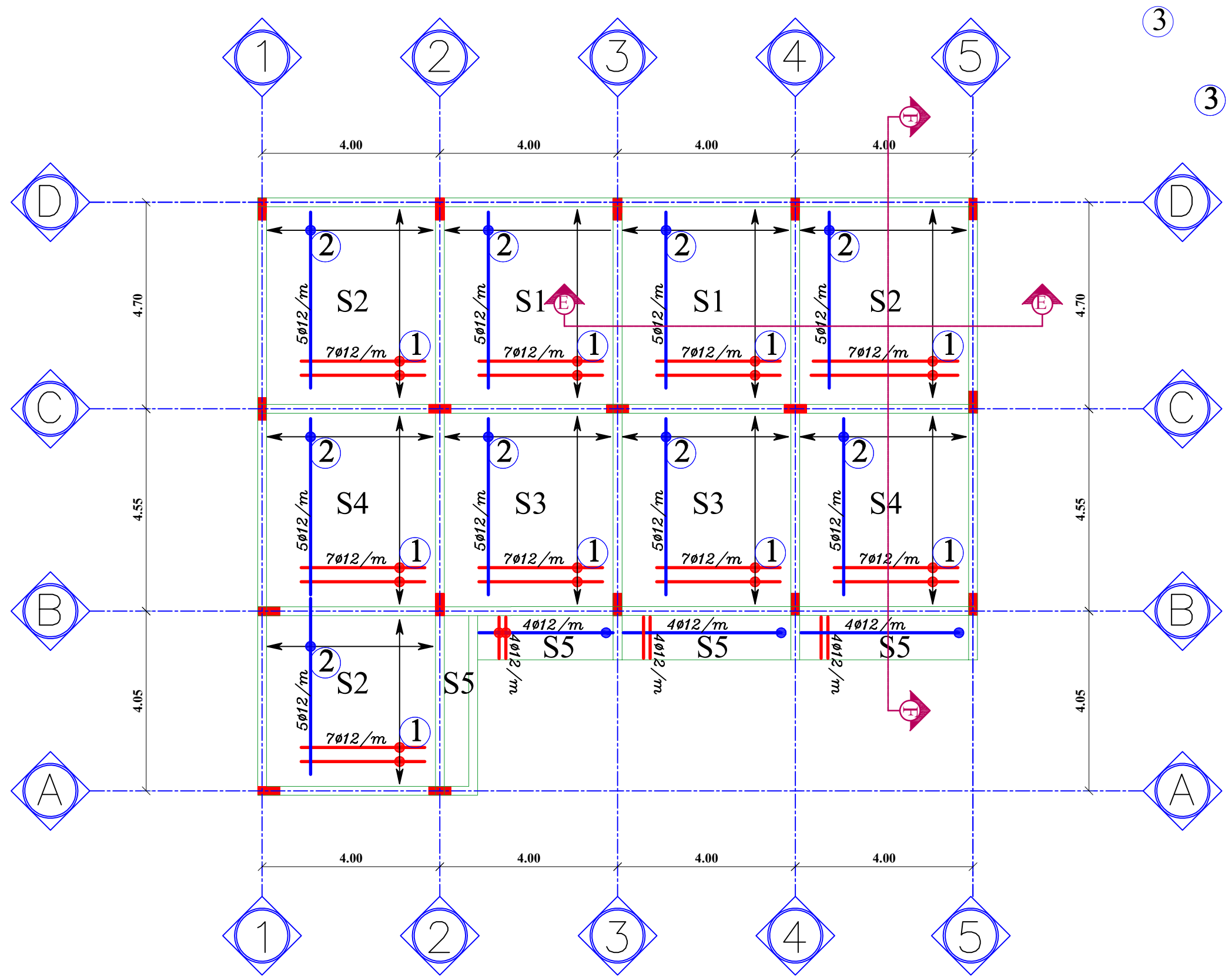
ALD WASH TEAM

SCALE:

(No)

DATE:

(Jun.2022)



Notes :-

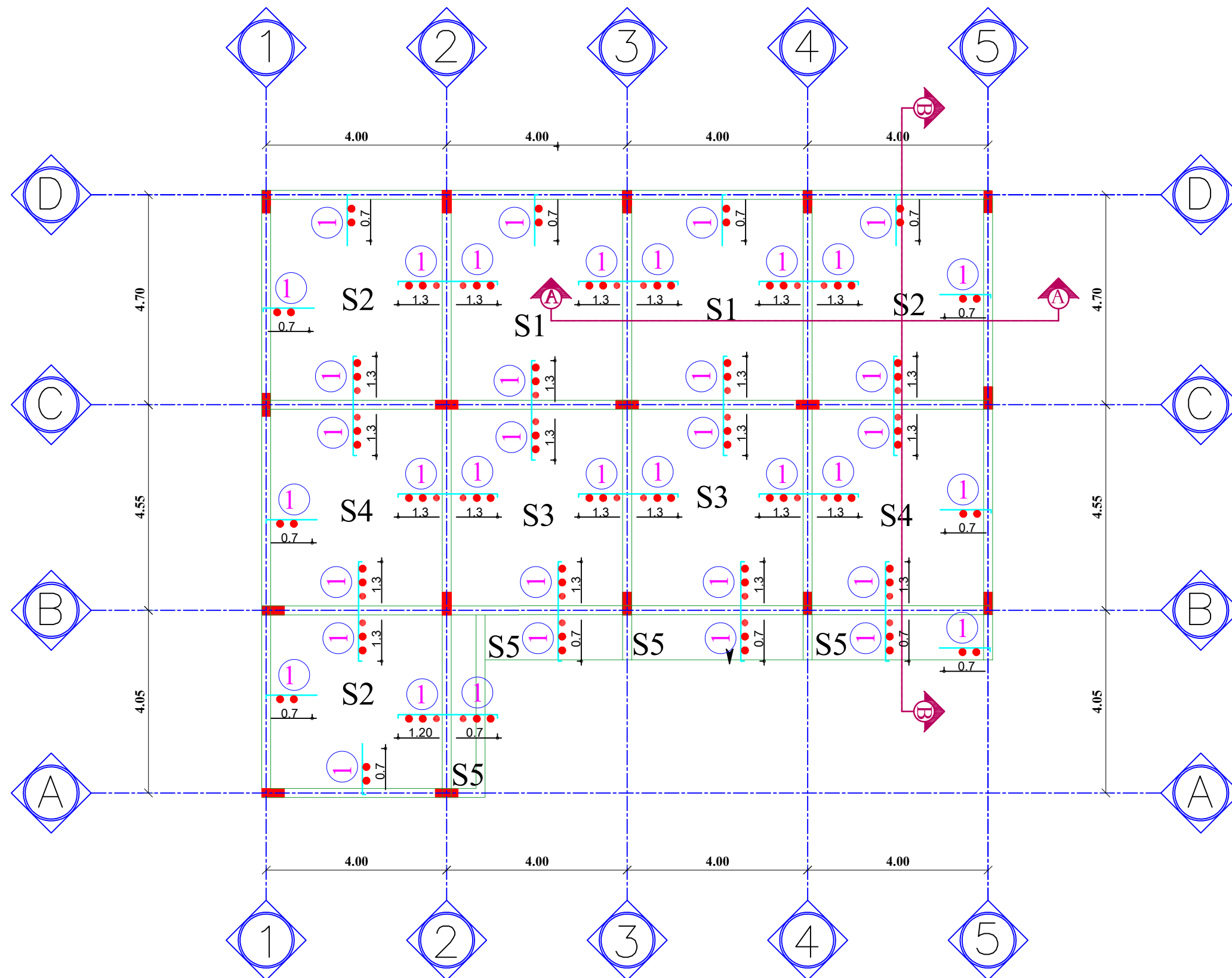
All dimensions in meters unless specified
 $f_{cu}=20N/mm^2$
 $f_y=250N/mm^2$
Cover=20mm

Key of Drawing

main bar in bottom
secondary bar in bottom

Define The Symbols

Symbols	\varnothing (mm)	C/C(cm)
1	R12	150
2	R12	200



Notes :-

All dimensions in meters unless specified

$f_{cu}=20\text{N/mm}^2$

$f_y=250\text{N/mm}^2$

Cover=20mm

$f'_c=20\text{ MPa (or designed value)}$

Key of Drawing

main bar in top

secondary bar distribution



Drob slabs (-0.2m)

Symboles	\varnothing (mm)	main rein.	dis.rein.
		C/C(cm)	C/C(cm)
1	R12	250	250

MEDAIR

each life matters

PROJECT NAME:

Rehabilitation of Lakamah Al-Doki HF YEM-126

DRAWING TITLE:

Structural Plan of Reinforcement Rebars
of Slabs (Tope Reinforcement Rebars)

DESIGN BY:

ALD WASH TEAM

CHECKED BY:

ALD WASH TEAM

DRAWING NO:

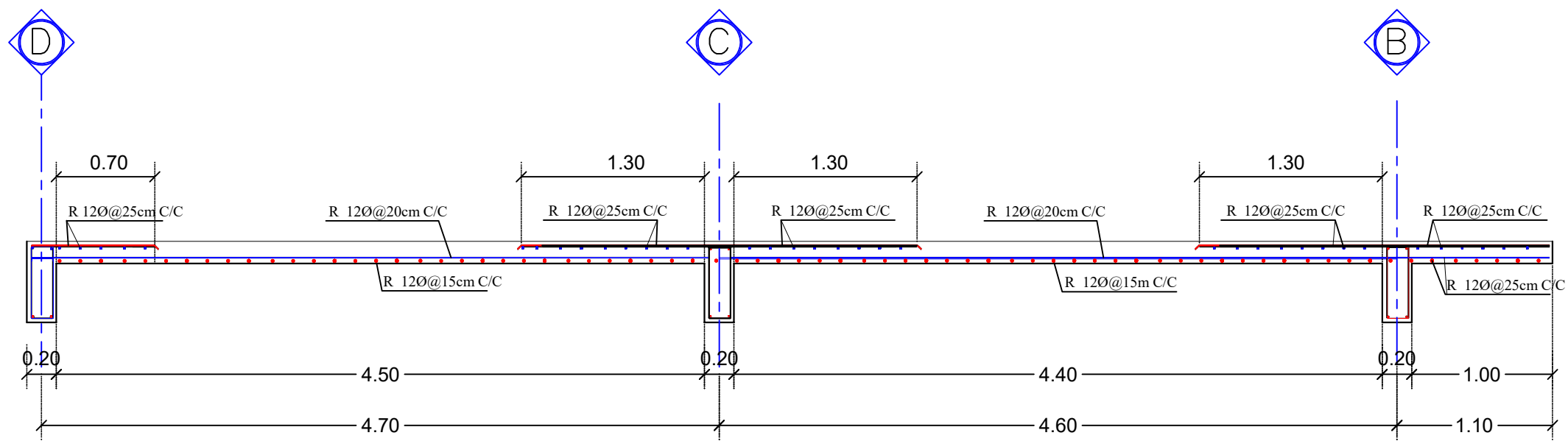
19

SCALE:

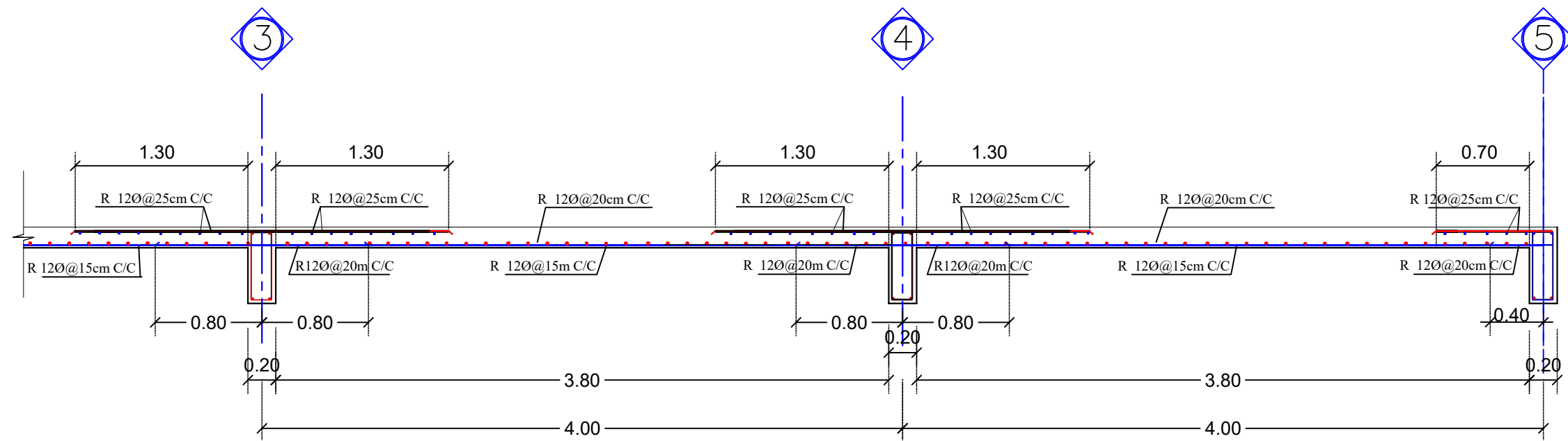
(1:100)

DATE:

(Jun.2022)



Section F-F



Section E-E

MEDAIR

each life matters

PROJECT NAME:

Rehabilitation of Lakamah Al-Doki HF YEM-126

DRAWING TITLE:

Section Reinforcement Rebars Detailing
of Slabs Section(E-E)&(F-F)

DESIGN BY:

ALD WASH TEAM

CHECKED BY:

ALD WASH TEAM

DRAWING NO:

20

SCALE:

(No)

DATE:

(Jun.2022)