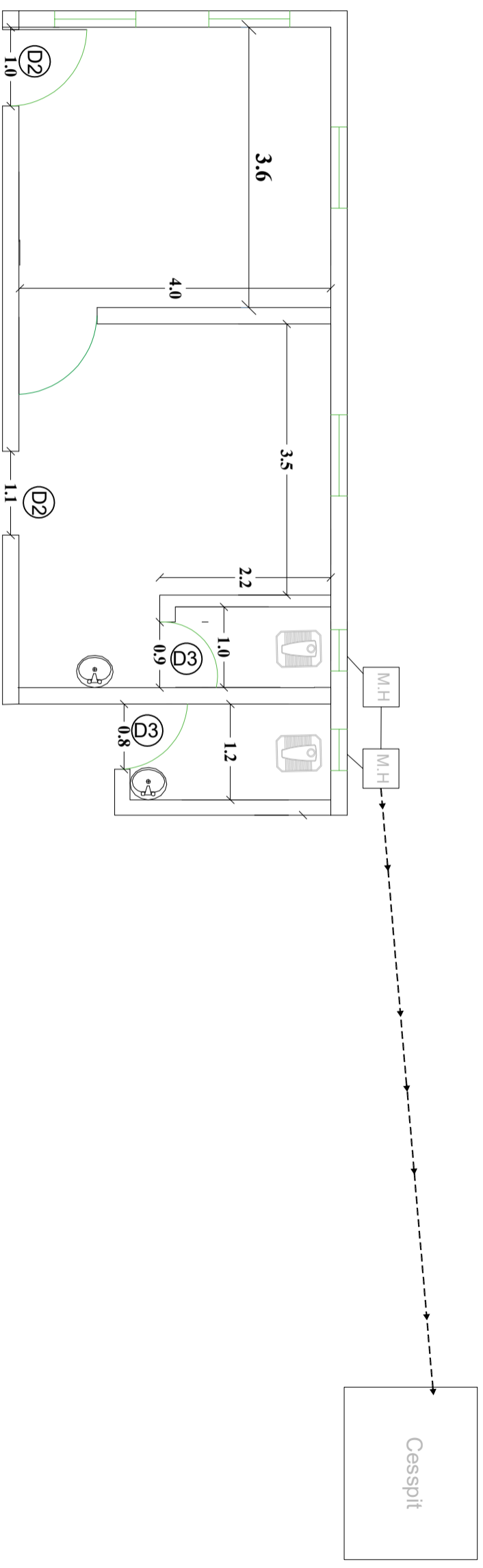
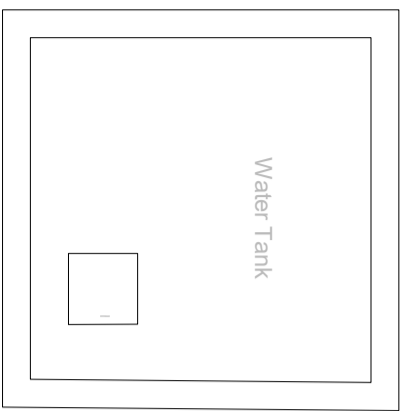
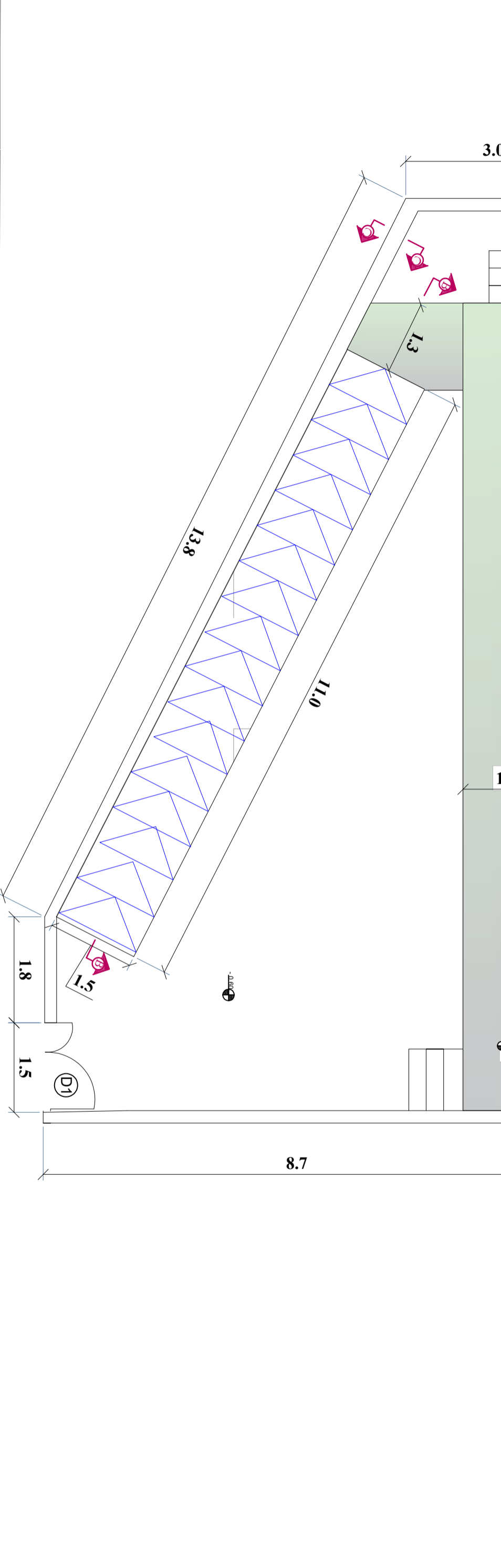
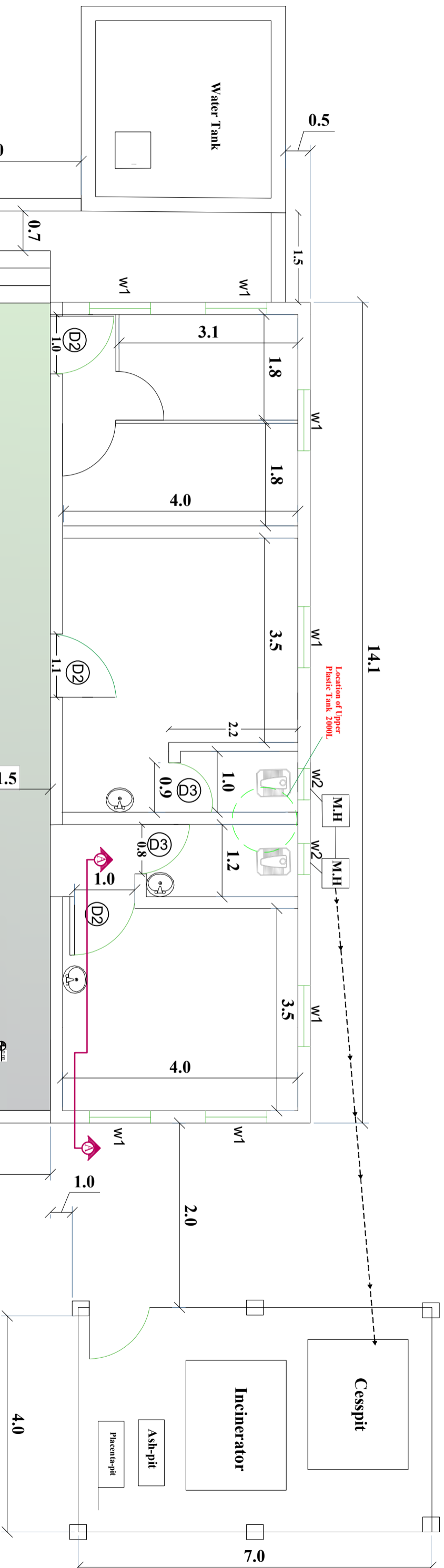


Before intervention





MEDAIR

each life matters

Drawing Title: Site Plan

Project Name: Rehabilitation of AL-Darb HF

Masonry block 0.20*0.20*0.40

Timber 3"*6" placed at 50cm c/c and slab 7cm thickness with

Reinforcement concrete beam(0.2m*0.2m)

Slope 12/2

PVC Drain pipe Ø50mm

Damp Proof Membrane
42mm Wooden plates
Timber 3"*6" placed at 50cm c/c

3.5 m

Aluminum Window(1.0m*1.0m)

Iron Door (0.9*2.2)

Ceramic tiles for floors
Cement mortar (2cm)
Sand (5cm)
Floor (10 cm plain concrete)
Course base with stone/selected material
approved by the Engineer

3 m

Section A-A

3.7 m

0.20 0.07 0.2

4Ø14mm

Ø8mm/20cm

0.20

0.20

0.25

0.20

-0.4

-0.5

+0.25

±0.00

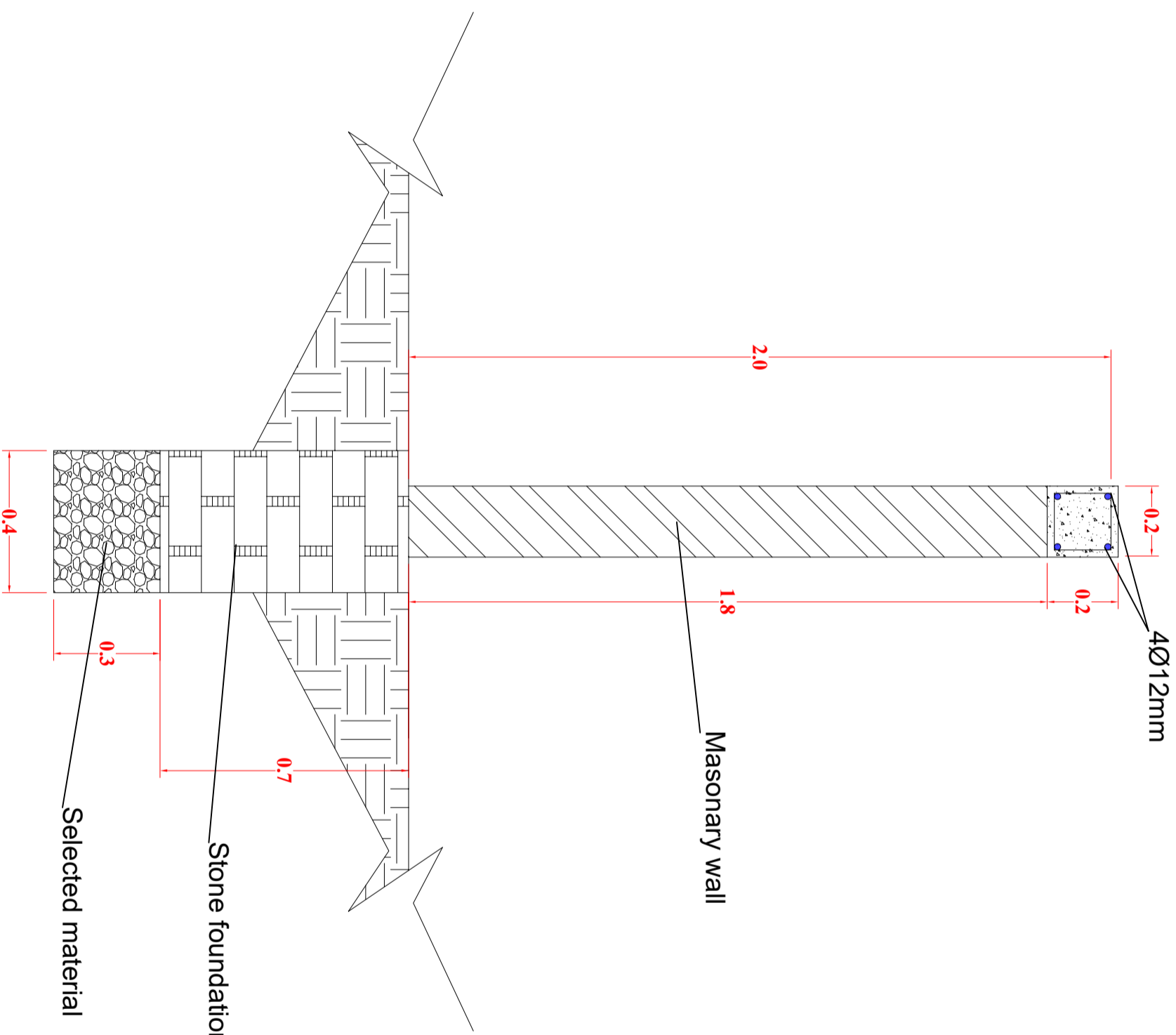
MEDAIR

each life matters

Drawing Title: Room Section

Project Name: Rehabilitation of AL-Darb HF

Masonry Fence



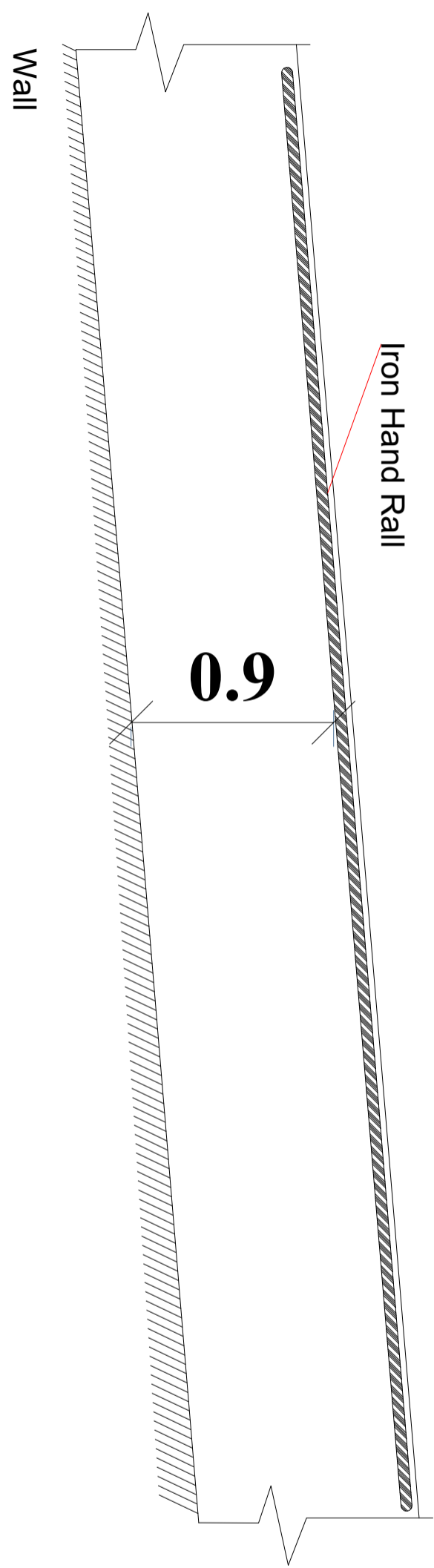
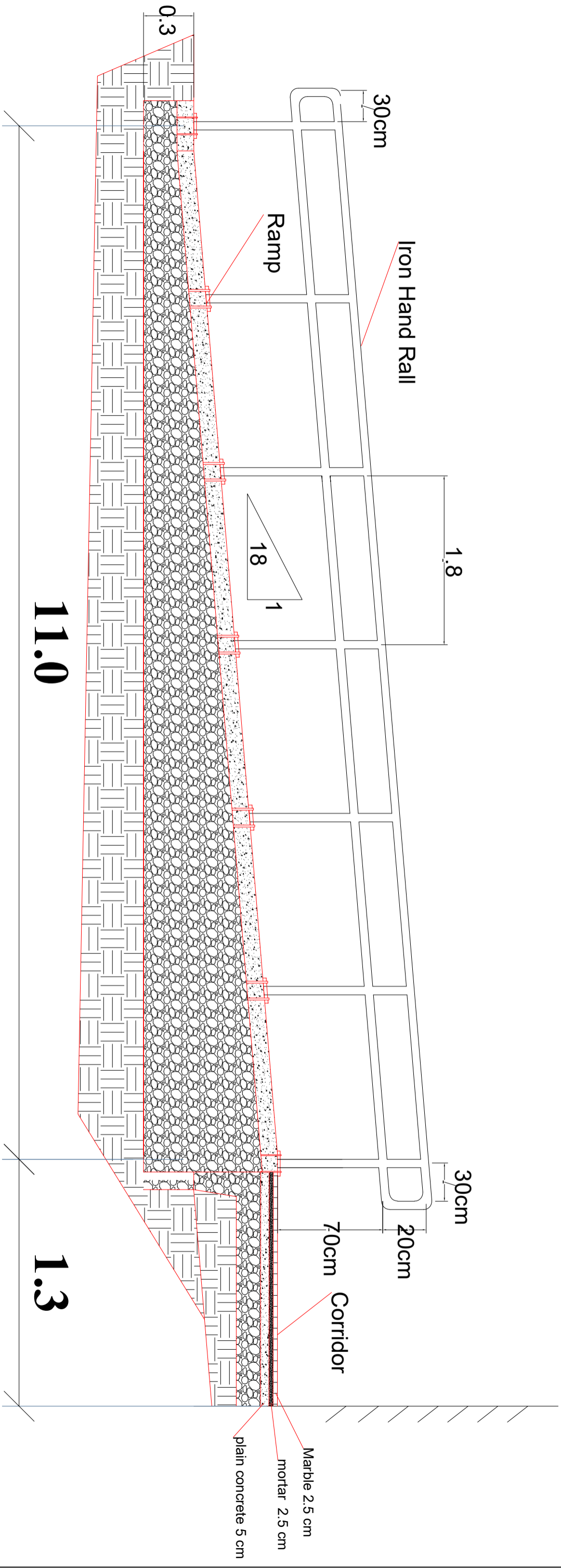
Section C-C

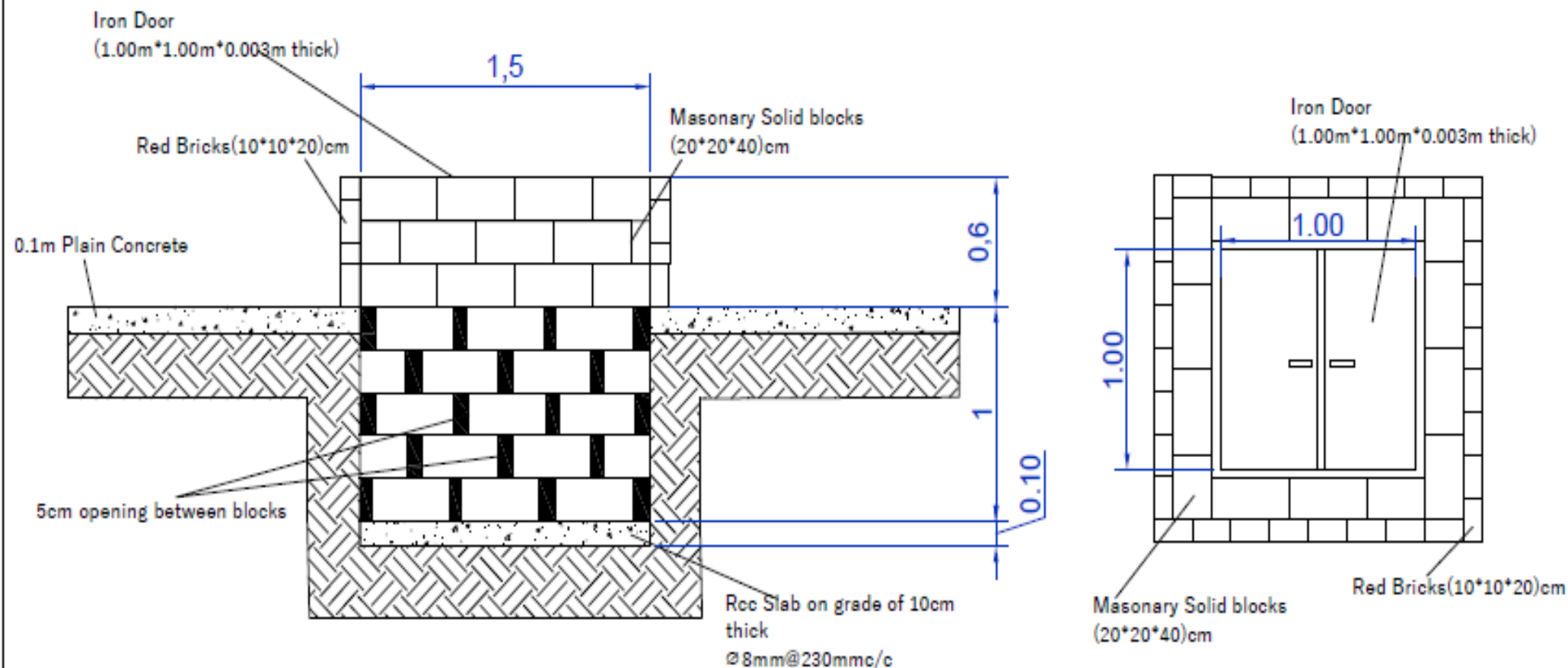
MEDAIR

each life matters

Drawing Title: Masonary Fence
Section C-C

Project Name: Rehabilitation of AL-Darb HF



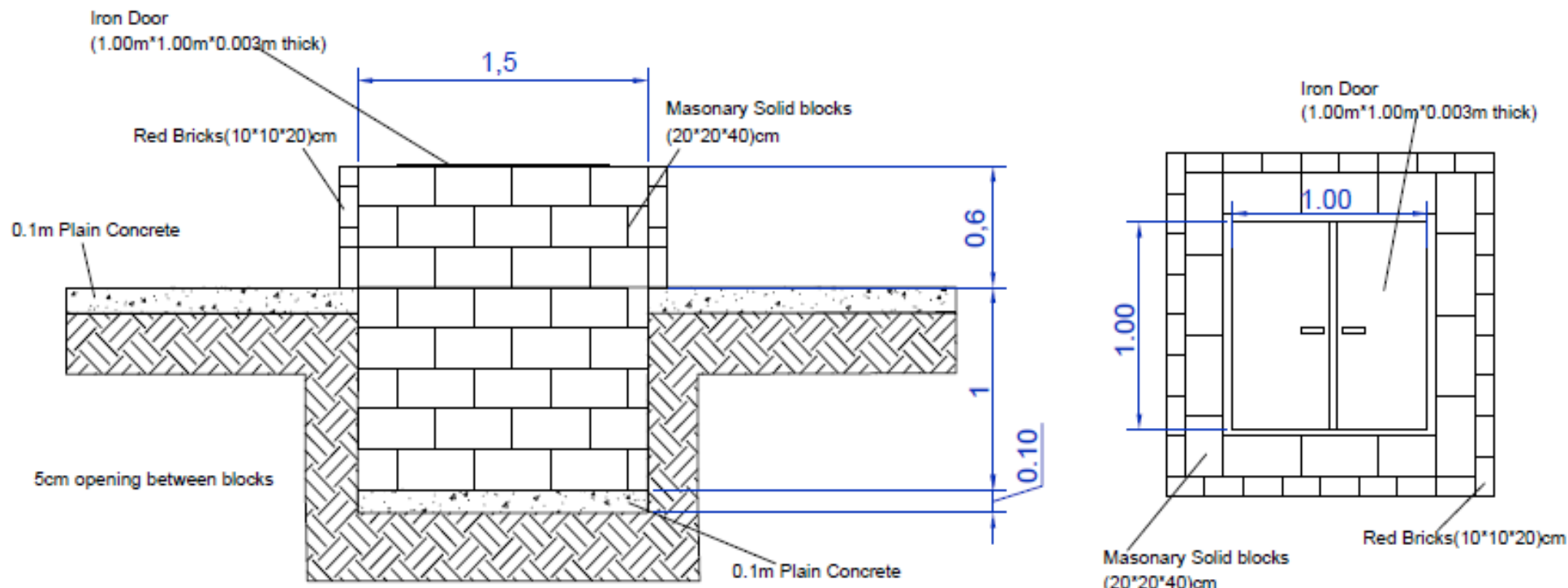


MEDAIR

each life matters

Drawing Title: Placenta Pit

Project Name: Rehabilitation of Al-Darb HF

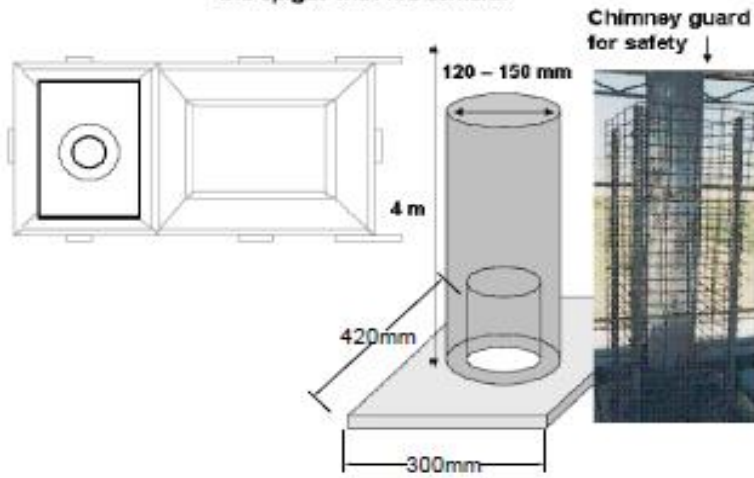


Drawing Title: Ash Pit

Project Name: Rehabilitation of Al-Darb HF

CHIMNEY

The chimney is made from a steel pipe (3mm thickness). It is sealed to the spigot with fire cement.

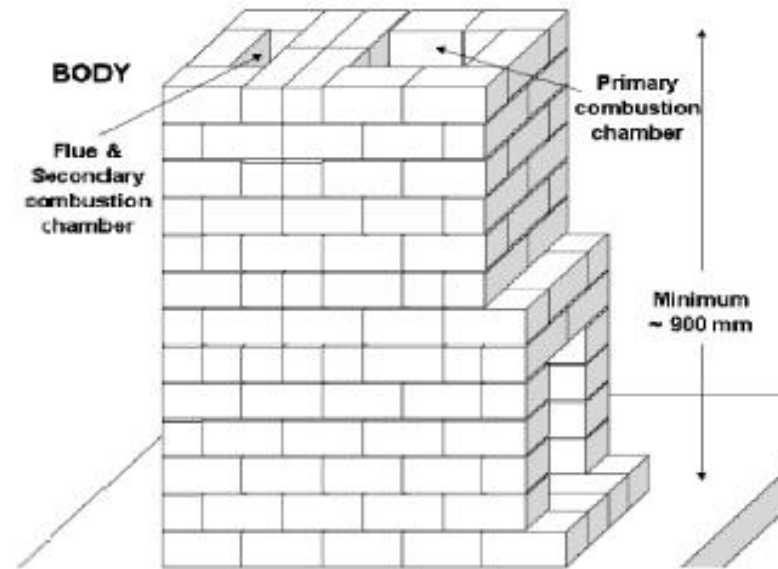


BODY

Flue & Secondary combustion chamber

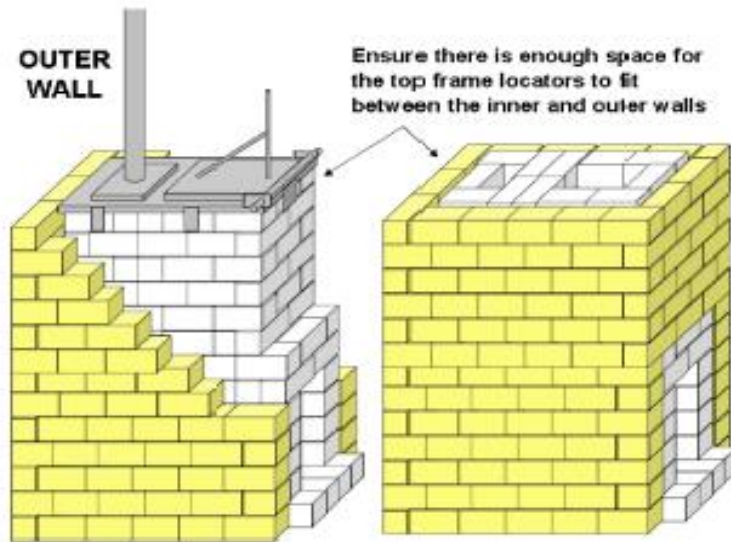
Primary combustion chamber

Minimum ~ 900 mm



OUTER WALL

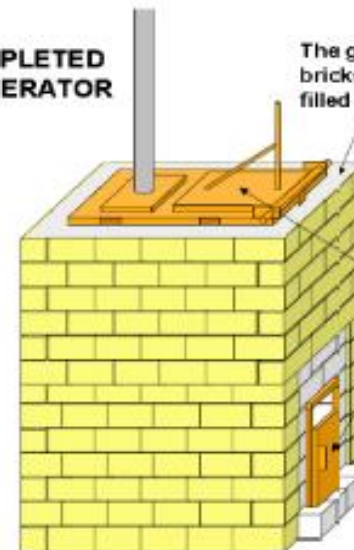
Ensure there is enough space for the top frame locators to fit between the inner and outer walls



COMPLETED INCINERATOR

The gaps between the refractory bricks and outer wall can be filled with refractory cement

Paint to inhibit corrosion



MEDAIR

each life matters

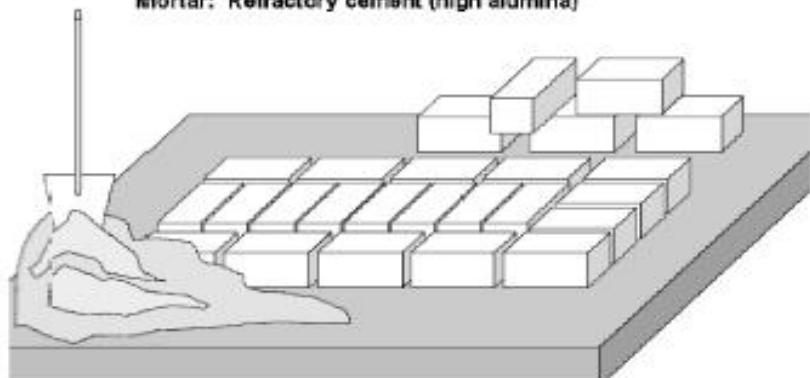
Drawing Title:

De Montfort Incinerator

Project Name: Rehabilitation of Al-Darb HF

FOUNDATION

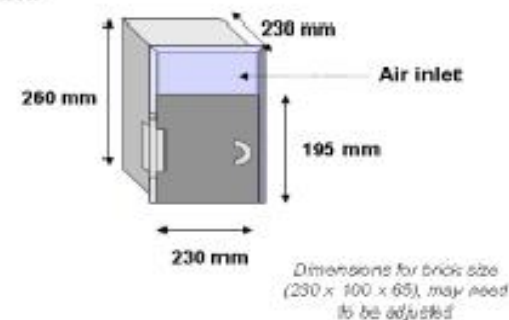
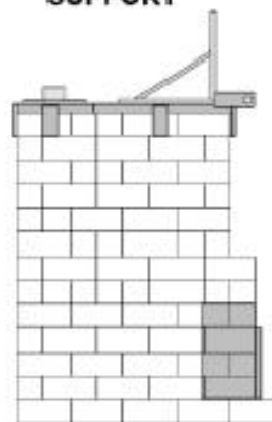
Concrete foundation: L x W x H = 2m x 2m x 0.15m
 Refractory bricks: L x W x H = approx. 230 x 110 x 65 mm
 Mortar: Refractory cement (high alumina)



ASH DOOR & SUPPORT

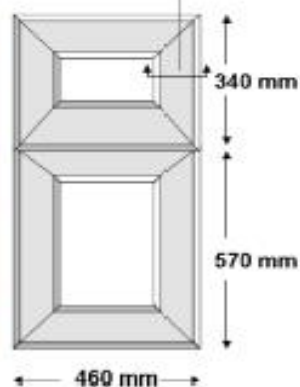
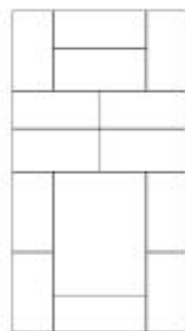
The brick arch at the front is supported by a steel tunnel (3mm thickness). Steel angle (30x30x3) welded around the front edge of the tunnel forms the support for the ash door, which is hinged.

The ash door (3mm thickness) covers $\frac{1}{3}$ of the area of the arch. The remainder forms the air inlet.



TOP FRAME

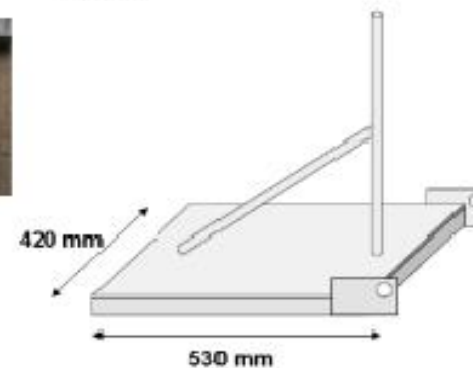
Cross section of metal channel



LOADING DOOR

The loading door is made from a frame of metal angle (30 x 30 x 3) with a plate of 3mm steel welded on top.

Underside



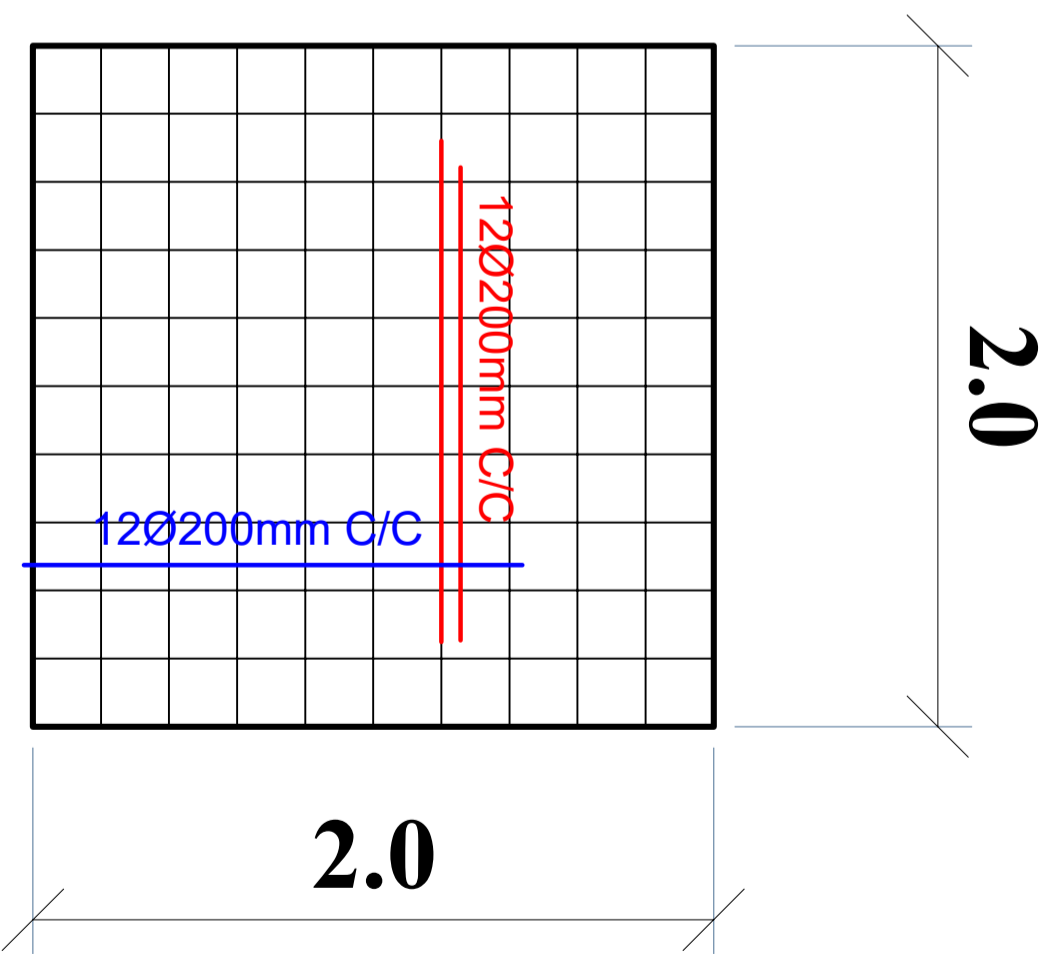
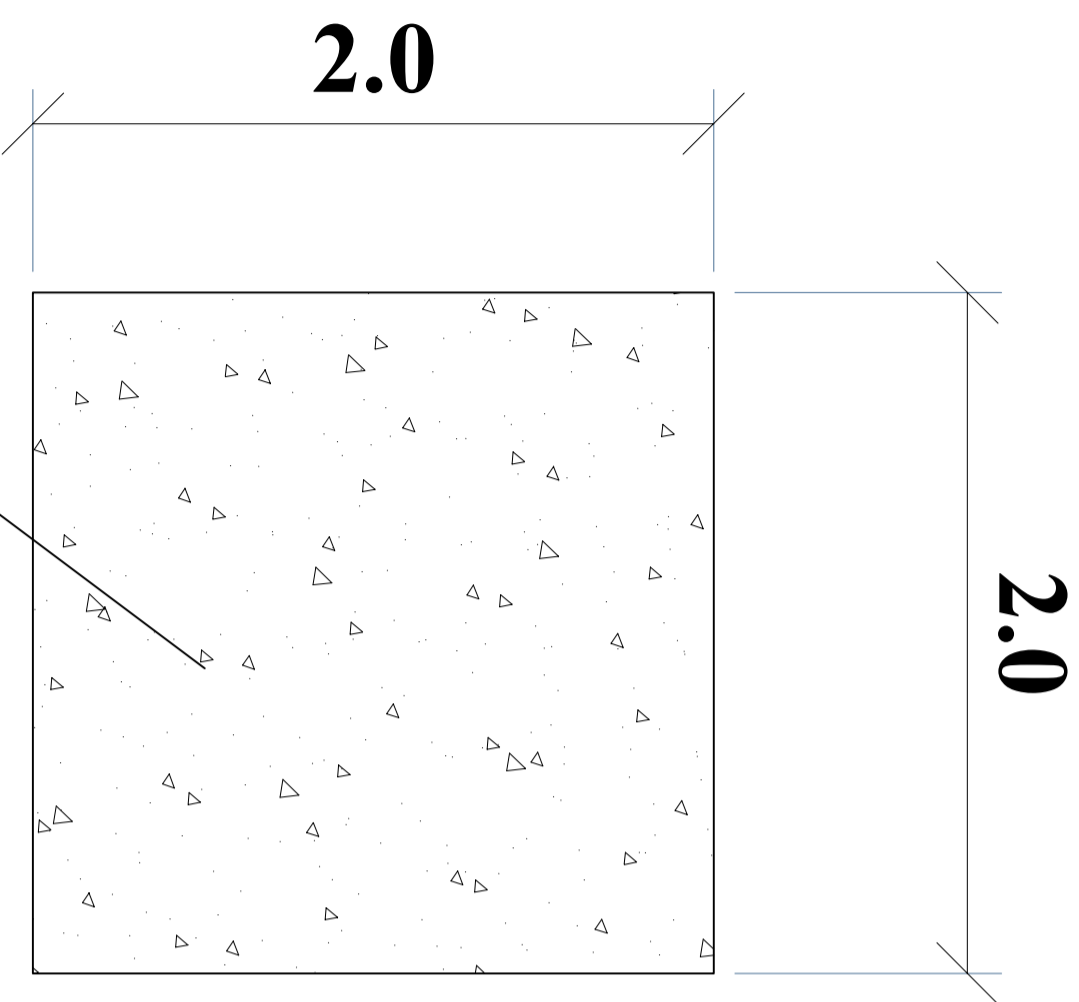
MEDAIR

each life matters

Drawing Title:

De Montfort Incenerator

Project Name: Rehabilitation of Al-Darb HF



Steel bar 12mm dis -200 mm c/c

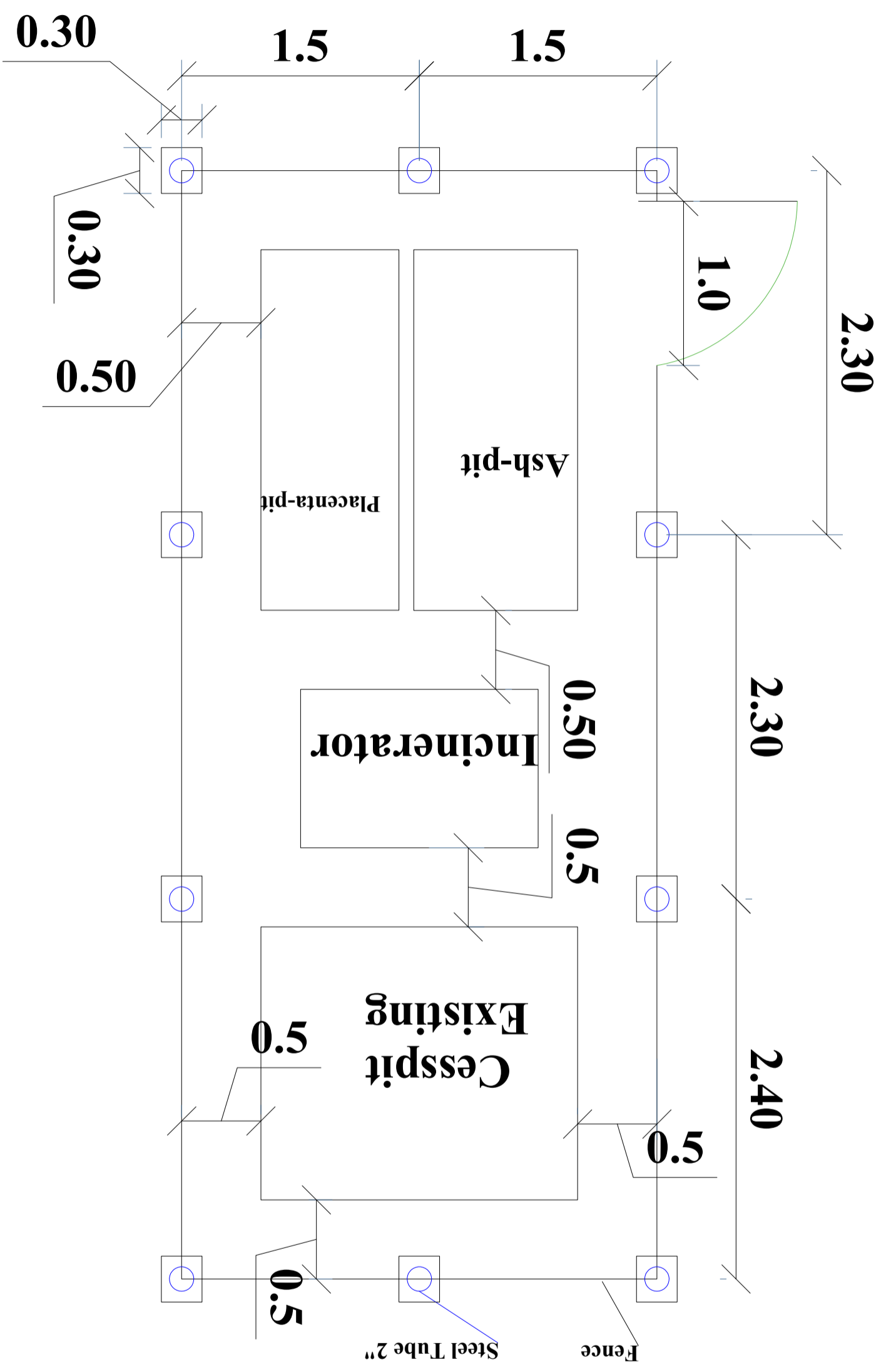
RCC Foundation

MEDDAIR

each life matters

Drawing Title:
RCC Foundation Incinerator

Project Name:
Rehabilitation of AL-Darb HF



MEDAIR

each life matters

Drawing Title: Details of Fence

Project Name: Rehabilitation of AL-Darb HF

