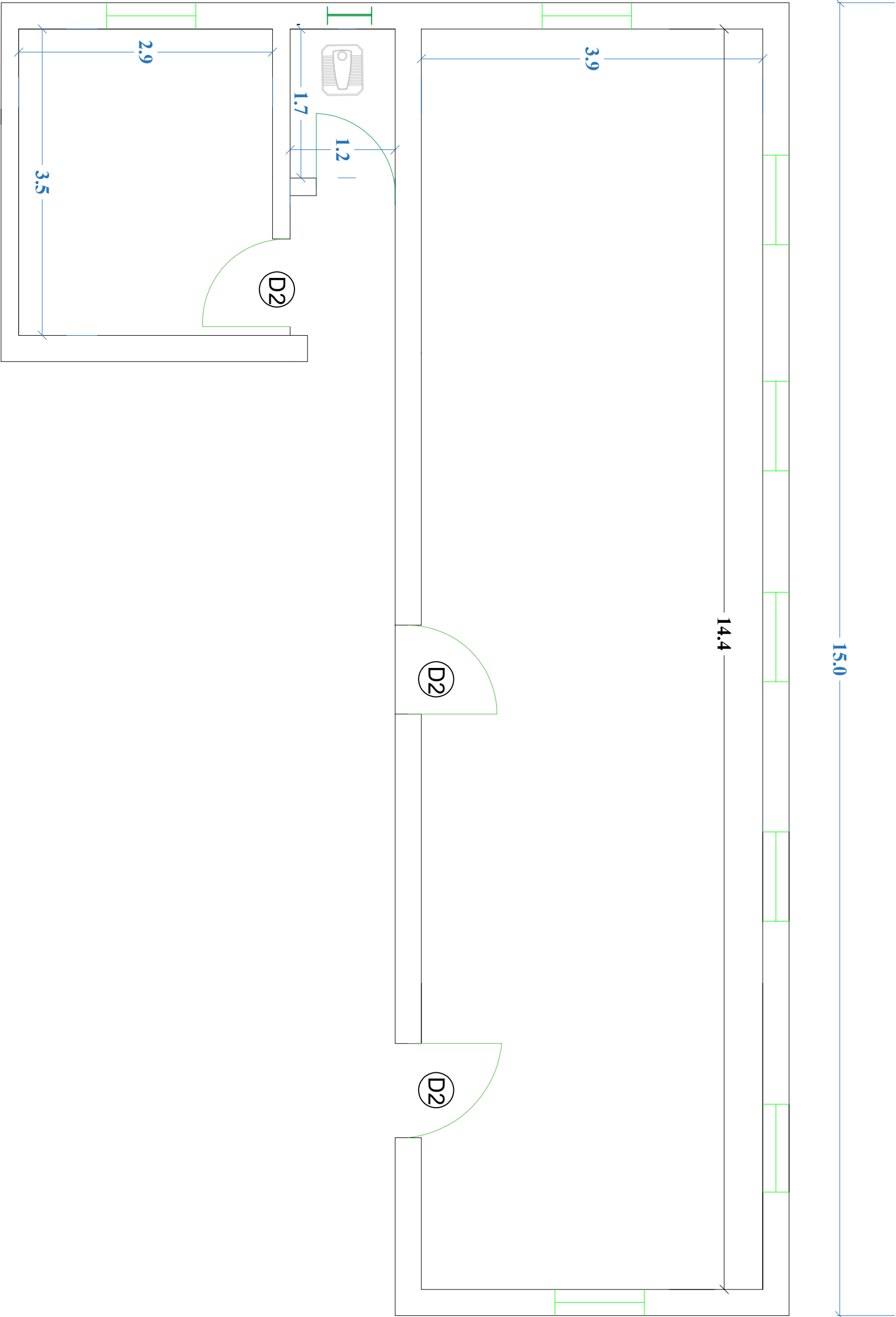


Before intervention

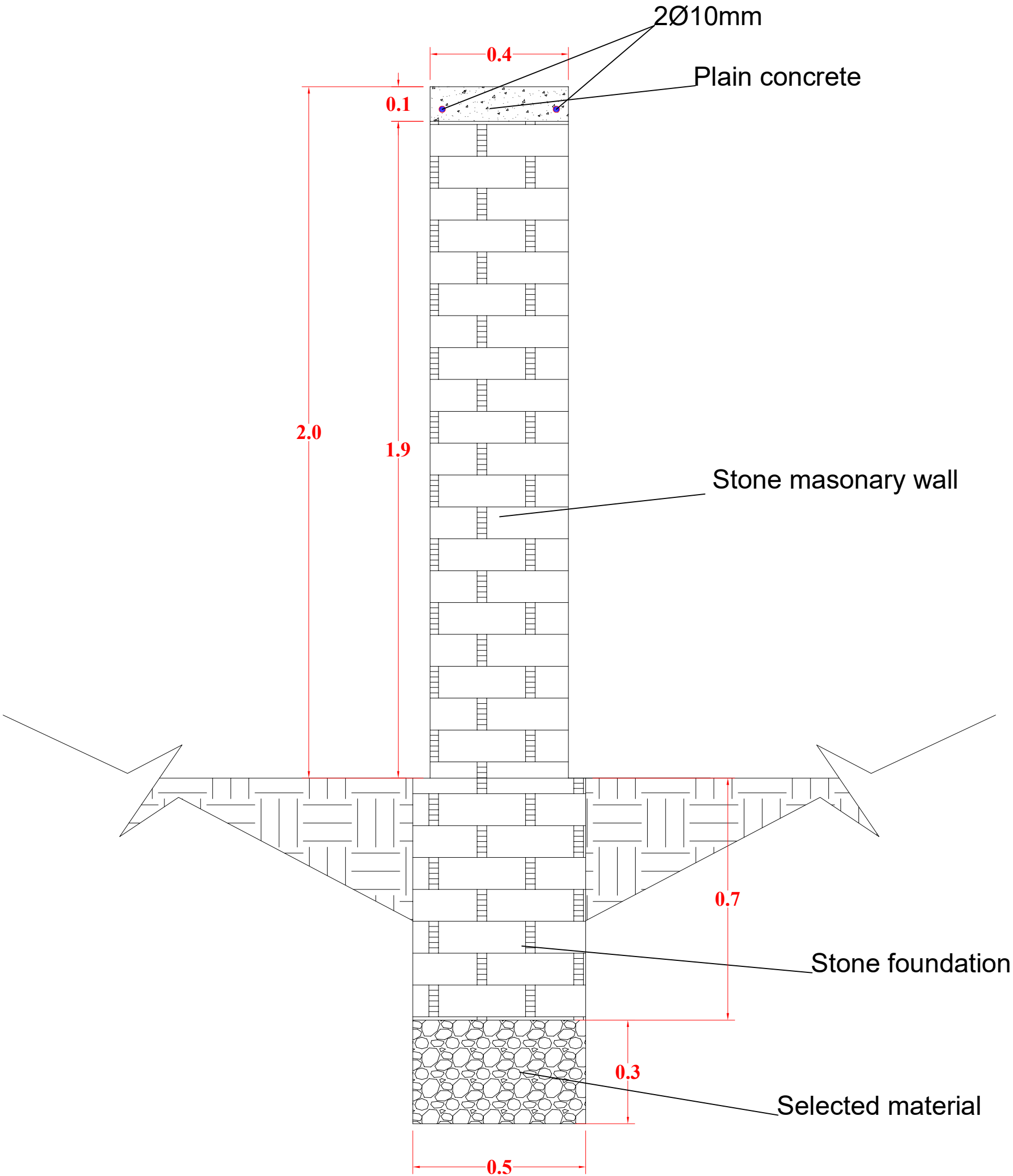


each life matters

Drawing Title: Site Plan

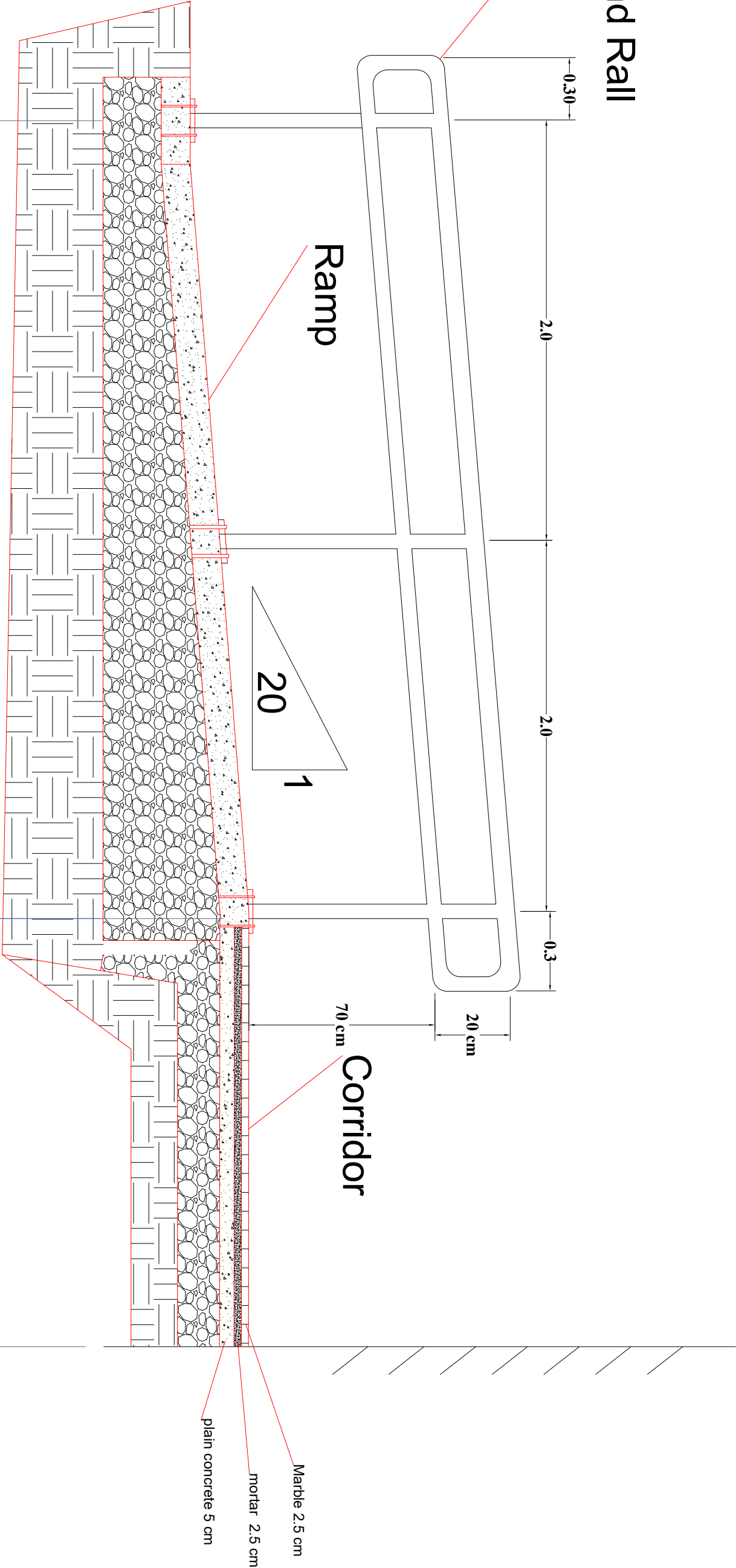
Project Name: Rehabilitation of
Obab HF

Masonry Fence



Section B-B

Iron Hand Rail



4.0

1.5

20

1

0.30

2.0

2.0

0.3

20 cm

70 cm

Corridor

Marble 2.5 cm

mortar 2.5 cm

plain concrete 5 cm

MEDAIR

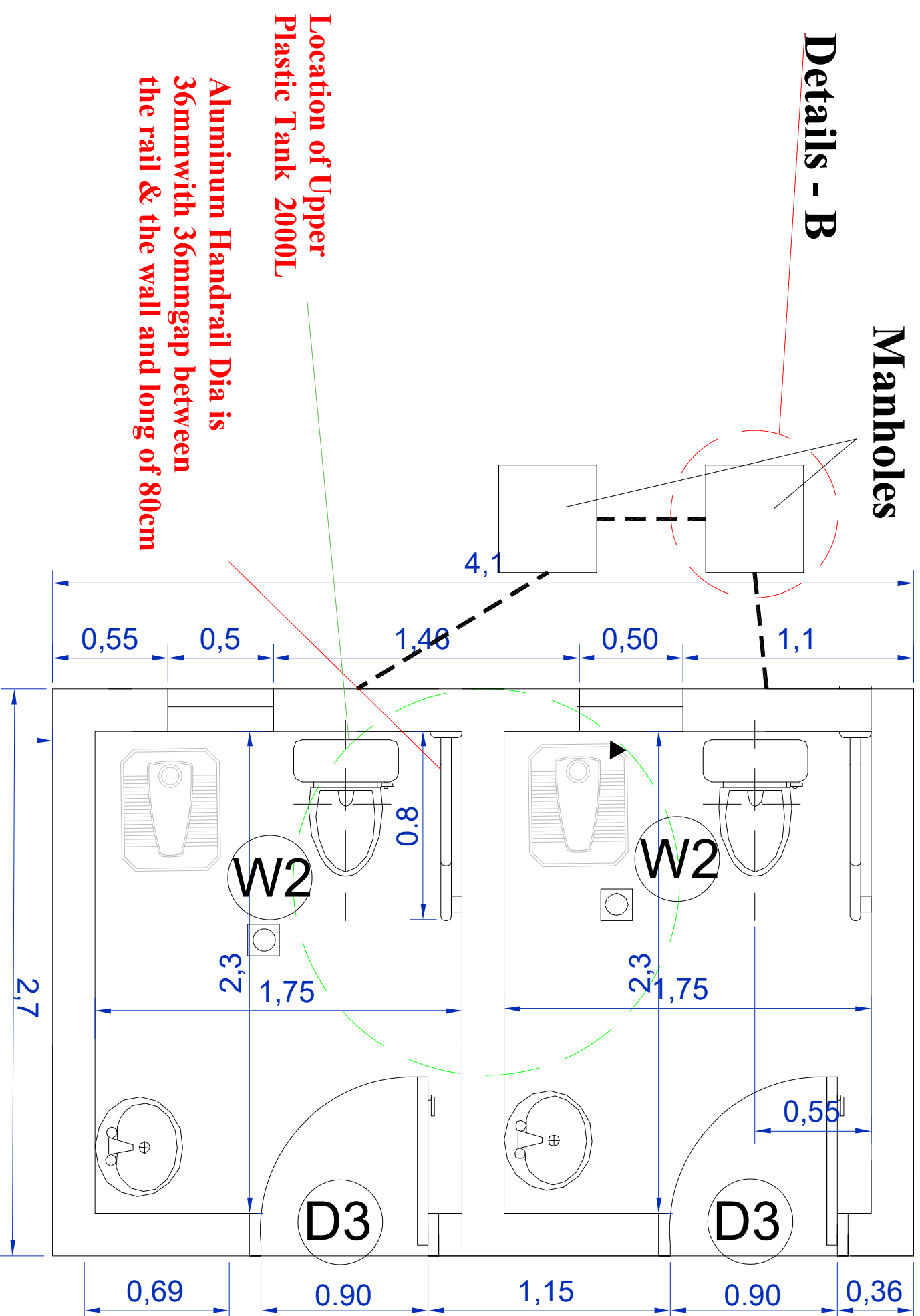
each life matters

Drawing Title: Ramp Section A-A

Project Name: Rehabilitation of Obab HF

Manholes

Details - B



MEDAIR

each life matters

Drawing Title:Toilets

Project Name: Rehabilitation of Obab HF

Masonry block 0.20*0.20*0.40
Timber 3"6" placed at 50cm c/c and slab 7cm thickness with

drainage pipes in the centre of each toilet.

Reinforcement concrete beam(0.2m*0.2m)

Aluminum Door (0.9*2.2)

Aluminum Window(1.0m*1.0m)

PVC Drain pipe Ø50mm

Slope $-\frac{12}{2}$

Damp Proof Membrane

42mm Wooden plates
Timber 3"x6" placed at 50cm c/c

Porcelain(WHC)toilets seats

Ceramic tiles for floors

Cement mortar (2cm)

Sand (5cm)

Floor (10 cm plain concrete)

Course base with

approved by the Engineer

Reinforced concrete ring beam(0.2m*0.2m)

Foundation Plinth stone masonry

with cement mortar ratio 1:5

Floor (10 cm plain concrete)

Section A-A 2.5

2.70

0.20

4014mm

Ø8mm/20cm

0.20

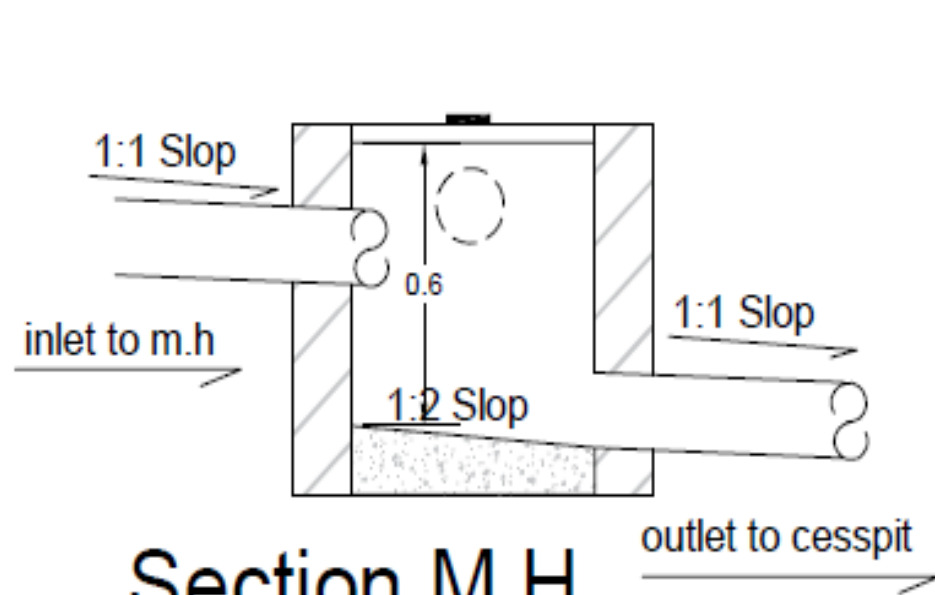
0.20

MEDAIR

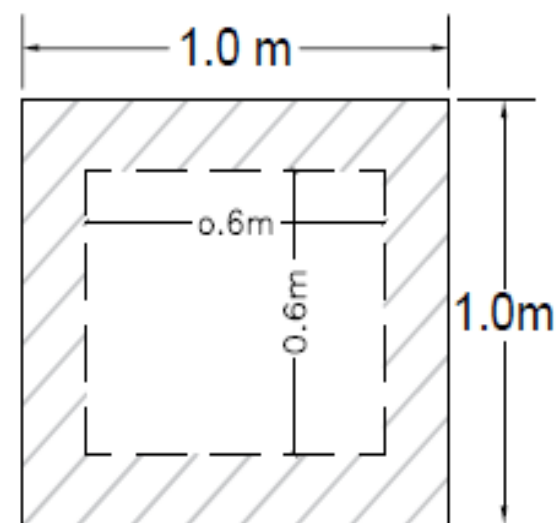
each **life** matters

Drawing Title: Toilets Section

Project Name: Rehabilitation of Obab HF



Section M.H



Plan M.H

MEDAIR

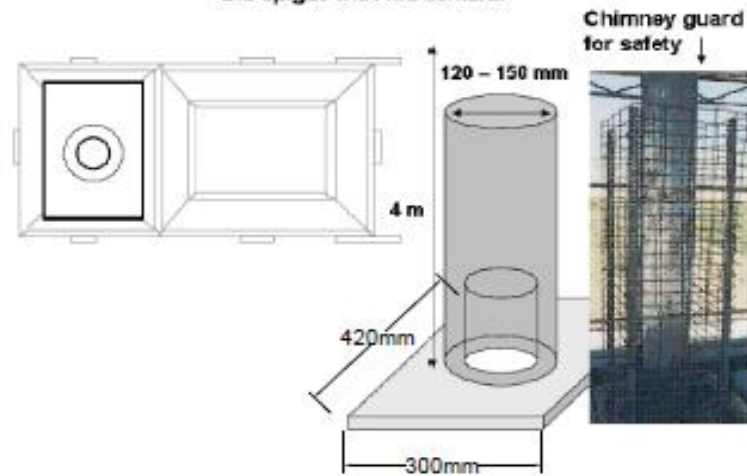
each life matters

Drawing Title:
Connections of Manholes

Project Name: Rehabilitation of Obab HF

CHIMNEY

The chimney is made from a steel pipe (3mm thickness). It is sealed to the spigot with fire cement.

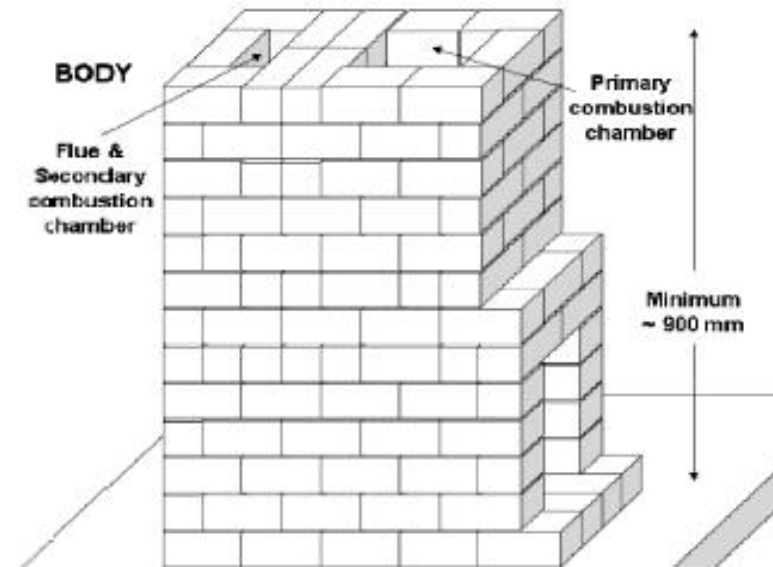


BODY

Flue & Secondary combustion chamber

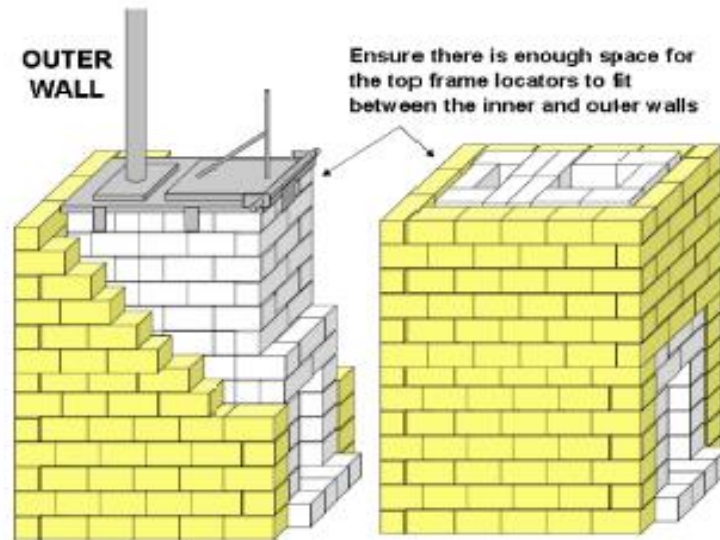
Primary combustion chamber

Minimum ~ 900 mm



OUTER WALL

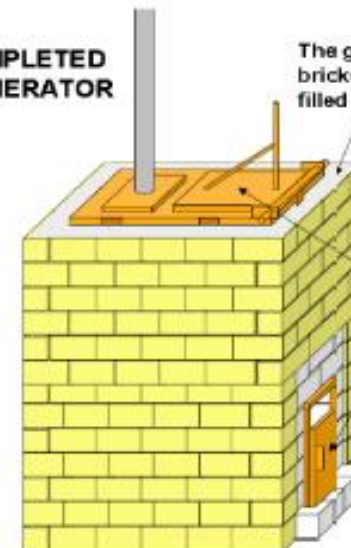
Ensure there is enough space for the top frame locators to fit between the inner and outer walls



COMPLETED INCINERATOR

The gaps between the refractory bricks and outer wall can be filled with refractory cement

Paint to inhibit corrosion



MEDAIR

each life matters

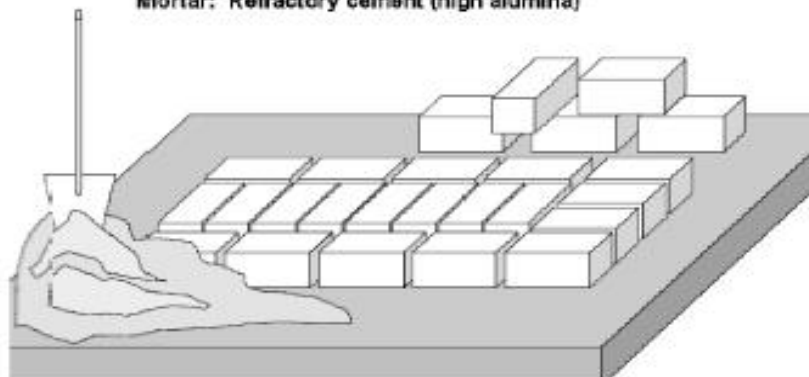
Drawing Title:

De Montfort Incenerator

Project Name: Rehabilitation of Obab HF

FOUNDATION

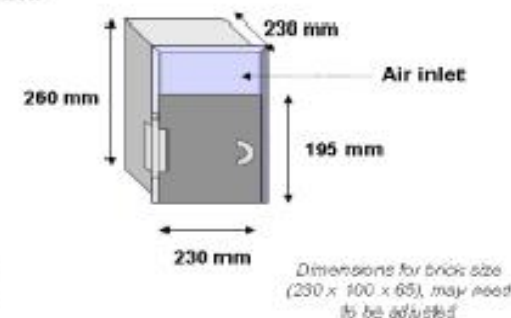
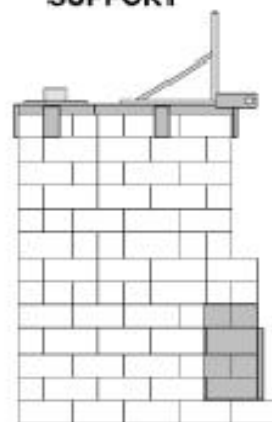
Concrete foundation: L x W x H = 2m x 2m x 0.15m
 Refractory bricks: L x W x H = approx. 230 x 110 x 65 mm
 Mortar: Refractory cement (high alumina)



ASH DOOR & SUPPORT

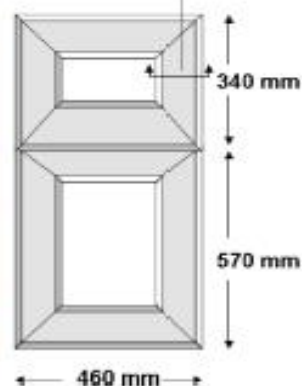
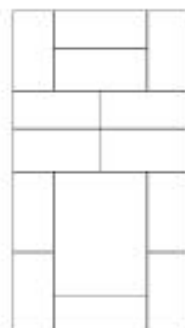
The brick arch at the front is supported by a steel tunnel (3mm thickness). Steel angle (30x30x3) welded around the front edge of the tunnel forms the support for the ash door, which is hinged.

The ash door (3mm thickness) covers $\frac{1}{3}$ of the area of the arch. The remainder forms the air inlet.



TOP FRAME

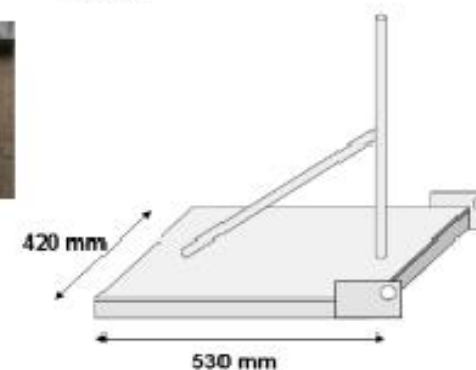
Cross section of metal channel



LOADING DOOR

The loading door is made from a frame of metal angle (30 x 30 x 3) with a plate of 3mm steel welded on top.

Underside



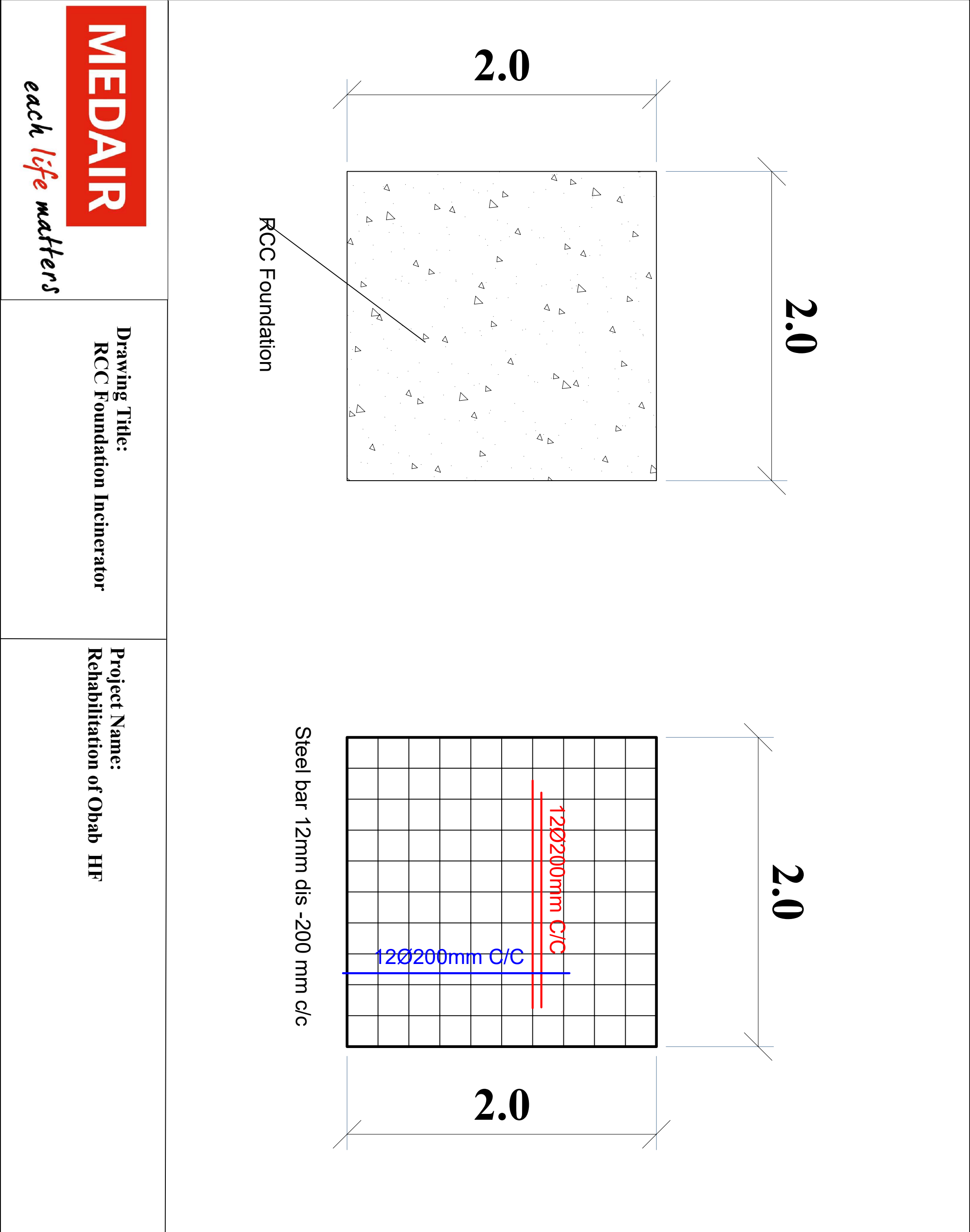
MEDAIR

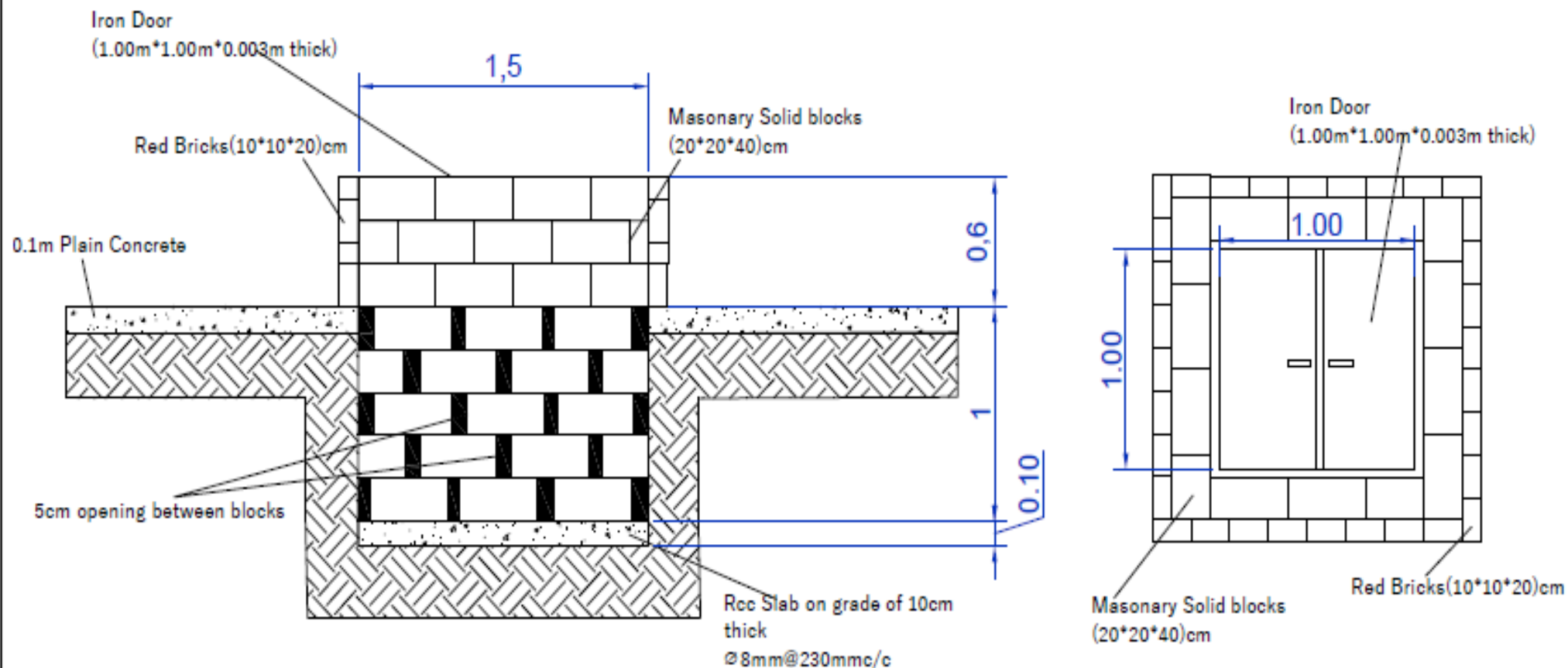
each life matters

Drawing Title:

De Montfort Incenerator

Project Name: Rehabilitation of Obab HF



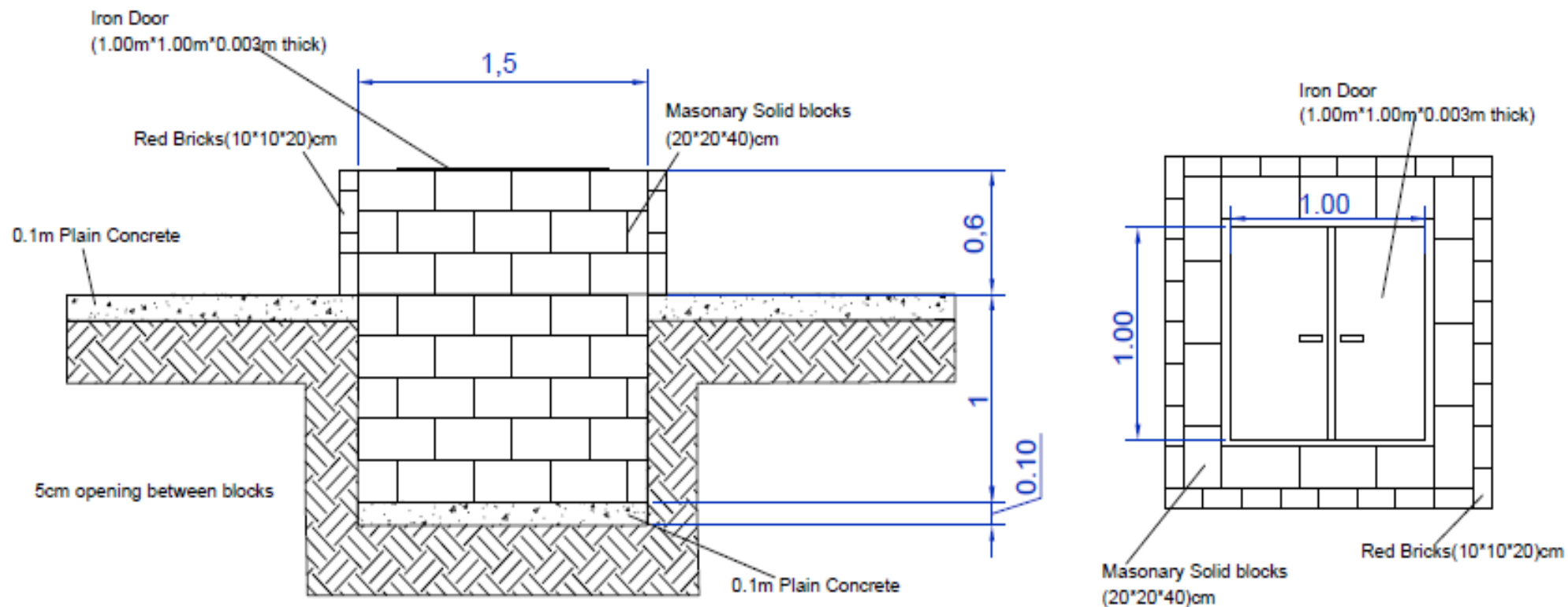


MEDAIR

each life matters

Drawing Title: Placenta Pit

Project Name: Rehabilitation of Obab HF

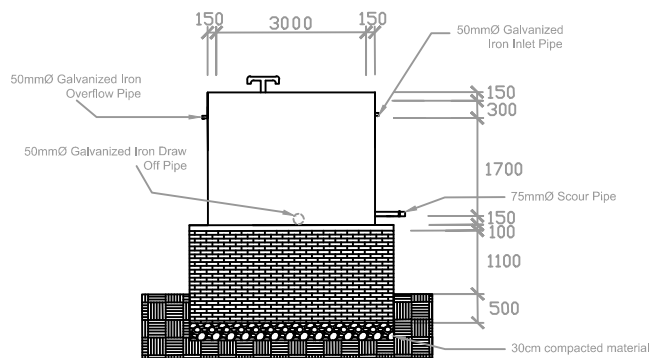


MEDAIR

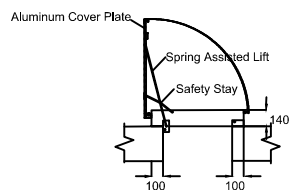
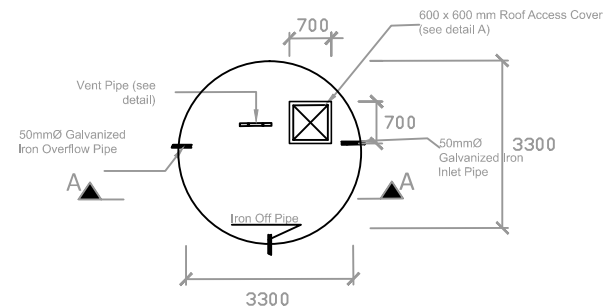
each life matters

Drawing Title: Ash Pit

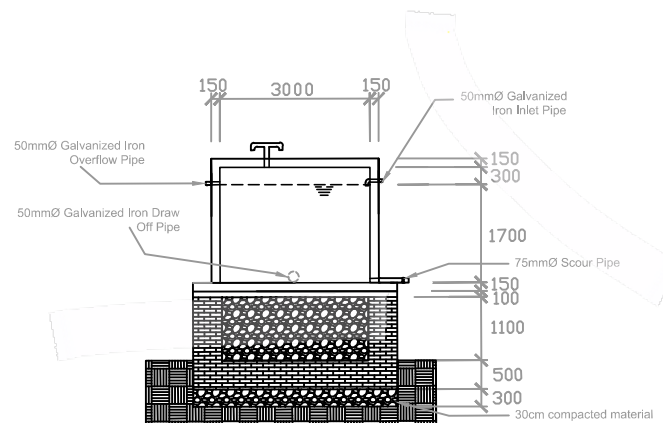
Project Name: Rehabilitation of Obab HF



SECTION A-A



DETAIL A: Roof Access Cover
Not to scale



SECTION A-A

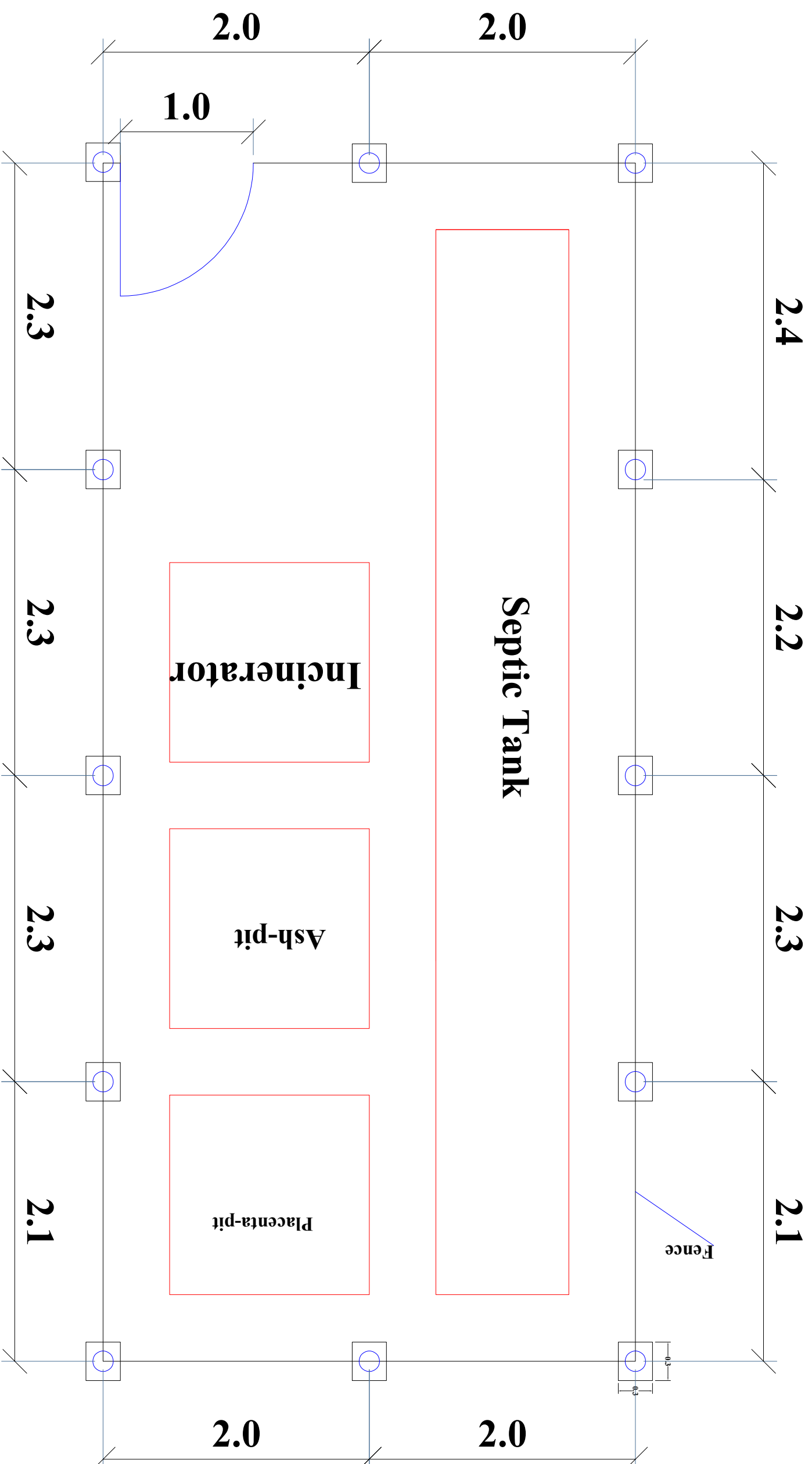
*All dimensions in millimeters

MEDAIR

each life matters

Drawing Title: Tank Section

Project Name: Rehabilitation of Obab HF AL.Azareq
AL- Dhalea WASH Team

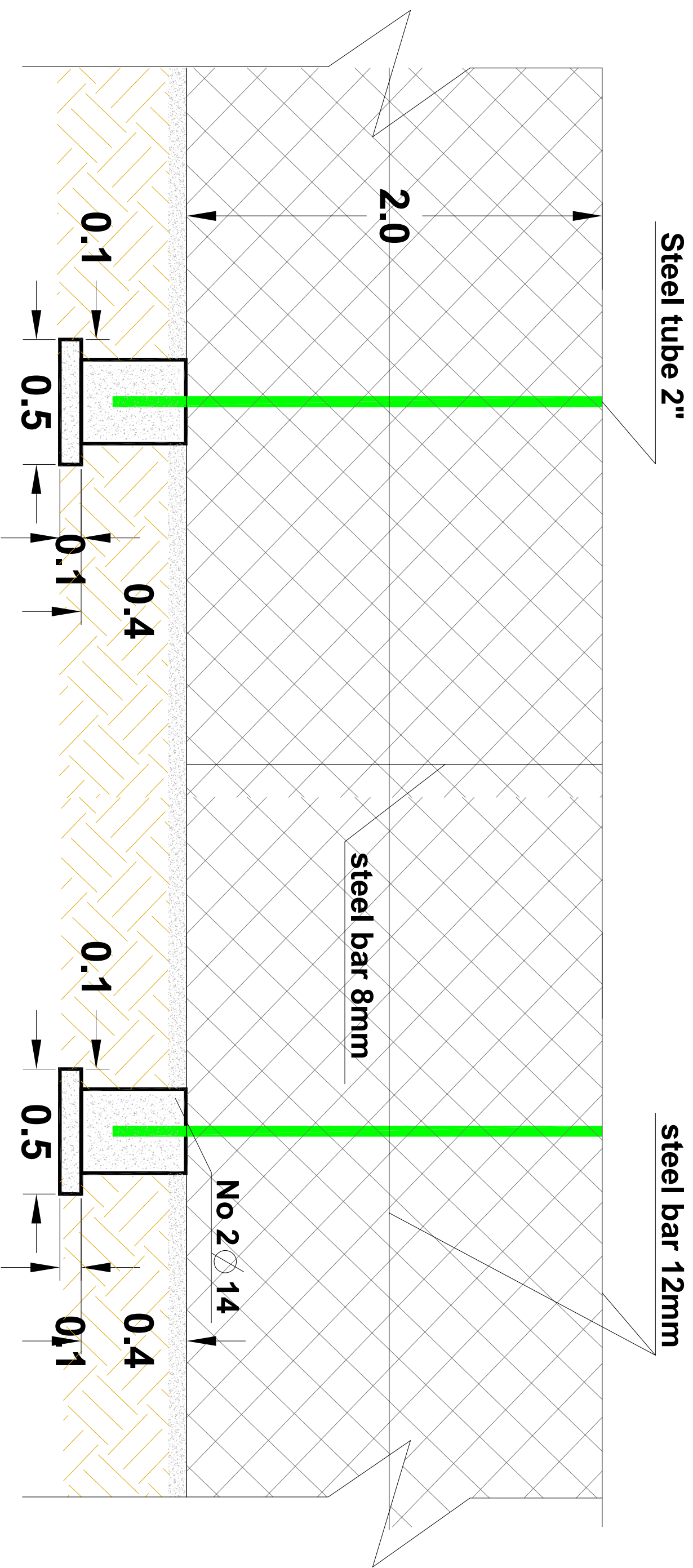


MEDAIR

each **life** matters

Drawing Title: Details of Fence

Project Name: Rehabilitation of Obab HF

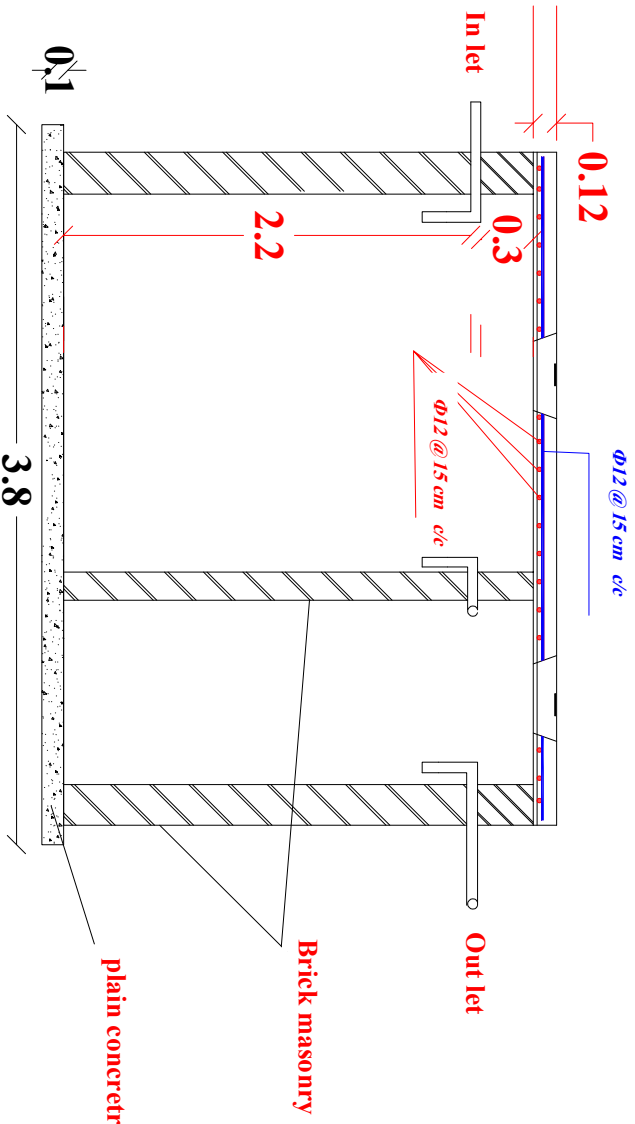
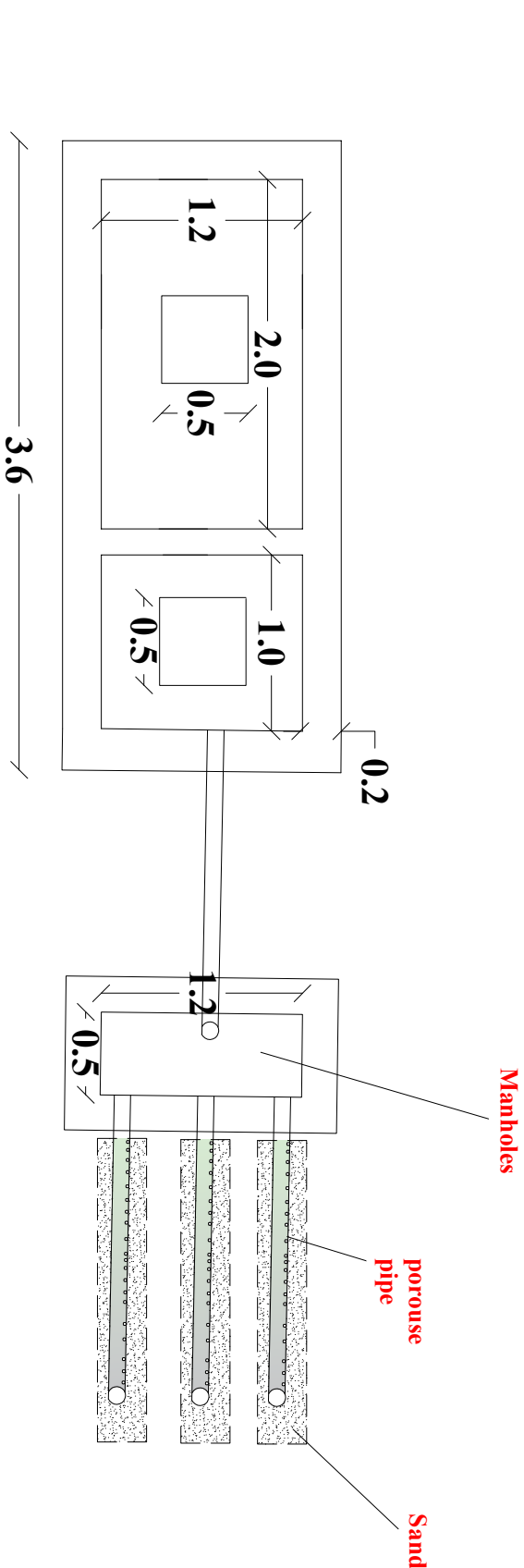


MEDAIR

each **life** matters

Drawing Title: Details of Iron Mesh Fence

Project Name: Rehabilitation of Obab HF



MEDAIR

each life matters

Drawing Title:
Septic Tank

Project Name:
Rehabilitation of Obab HF